

ECONOMY

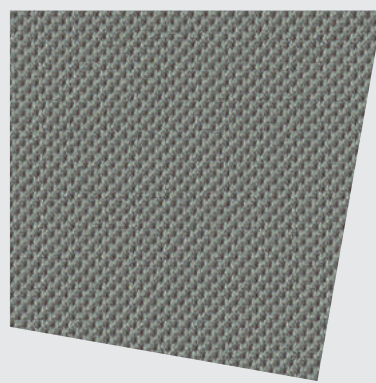
14

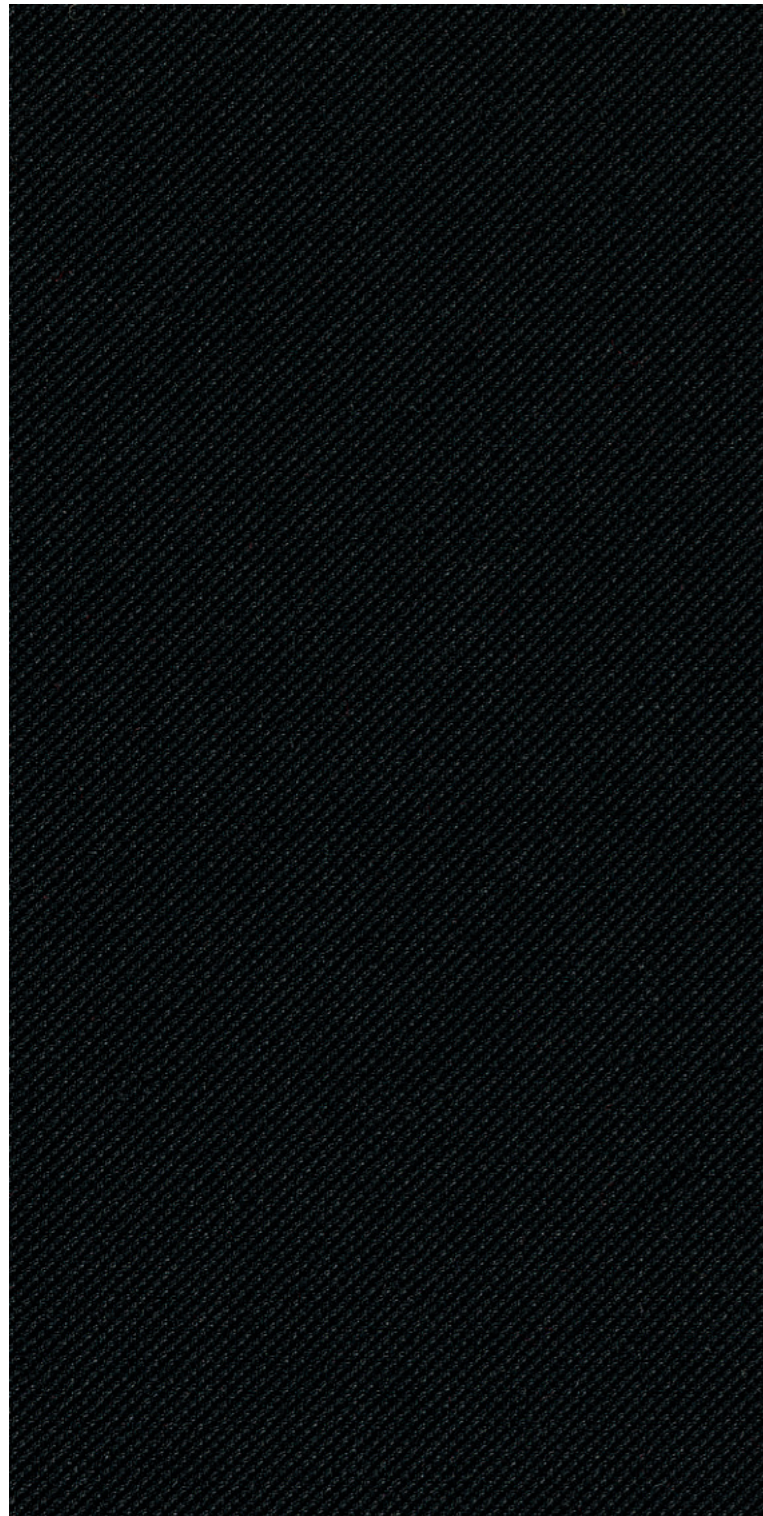
Stoffe Sitzmöbel, Raumsysteme und modulare Loungesysteme

Fabrics Seating, room systems and modular lounge systems

Tissus Sièges, cloisons toutes portantes et systèmes lounge modulaires

Stoffen Zitmeubilair, wandsysteemen en modulaire loungesystemen





**Atlantic, Gabriel
100 % Polyester**

Breite 150 cm, Längengewicht ca. 530 g/dfd. M.
Scheuerfestigkeit über 110.000 Scheuertouren
nach Martindale
Brandverhalten getestet nach DIN EN 1021,
Teil 1 und 2
EU Ecolabel
Schadstofffrei nach Öko-TEX Standard 100
100% Schwermetallfrei

**Zur Kombination mit Raumgliederungs-
elementen empfehlen wir die Stoffgruppe 82.**

**Atlantic, Gabriel
100 % polyester**

150 cm wide, approx. weight 530 g/lm
Wear resistance tested to over 110.000 rub
cycles on the Martindale test
Flammability tested to DIN EN 1021,
parts 1 and 2
EU Ecolabel
Free of harmful substances in acc. with
Oeko-TEX Standard 100
100% free of heavy metals

**For combination with screens, we recommend
the use of fabric group 82.**

**Atlantic, Gabriel
100 % polyester**

Largeur : 150 cm, poids au mètre :
environ 530 g / ml
Résistance à l'usure : plus de 110.000 tours
Martindale
Comportement au feu testé selon la
norme DIN EN 1021, parties 1 et 2
écolabel UE
Exempt de substances toxiques selon le
label « Öko-TEX Standard 100 »
100 % exempt de métaux lourds

**Nous recommandons le groupe de tissus 82
pour combiner avec les cloisons modulaires.**

**Atlantic, Gabriel
100 % polyester**

Breedte 150 cm, gewicht per
strekende meter ca. 530 g
Slijtvastheid 110.000 toeren Martindale
Brandgedrag getest volgens DIN EN 1021,
deel 1 en 2
voldoet aan het Europees ecolabel
Vrij van schadelijke stoffen conform
Eco-TEX standaard 100
100% vrij van zware metalen

**Voor de combinatie met scheidingswanden
raden wij stofgroep 82 aan.**



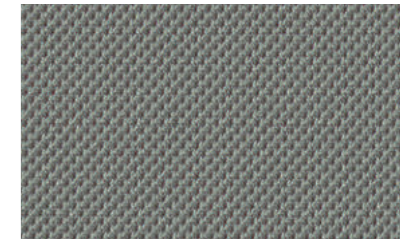
62

schwarz / black / noir / zwart



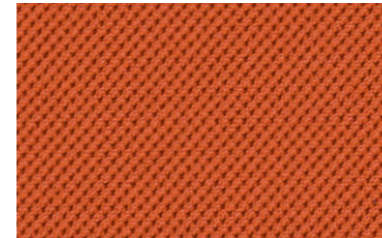
91

anthrazit / anthracite / anthracite /
antraciet



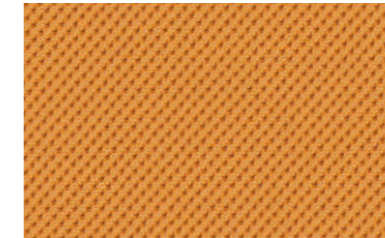
53

grau / grey / gris / grijs



82

orange / orange / orange / oranje



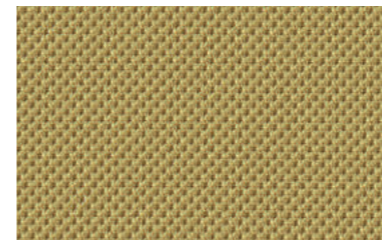
71

gelb / yellow / jaune / geel



25

beige / beige / beige / beige



70

ocker / ochre / ocre / oker



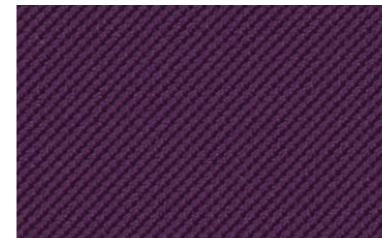
61

rot / red / rouge / rood



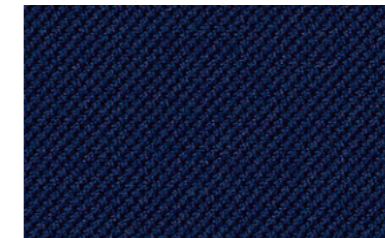
85

rosé / rose / rosé / roze



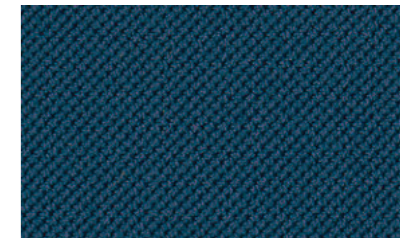
67

brombeer / blackberry / mûre /
bramen



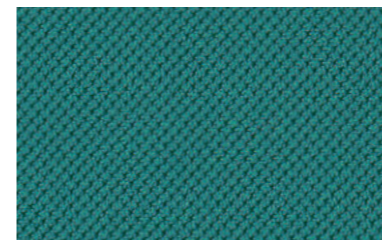
42

dunkelblau / dark blue /
bleu foncé / donkerblauw



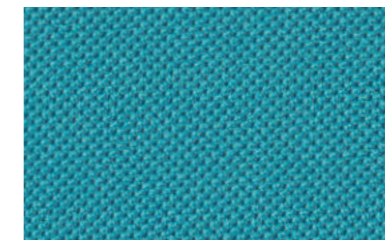
47

petrolblau / petrol blue /
bleu pétrole / petrolblauw



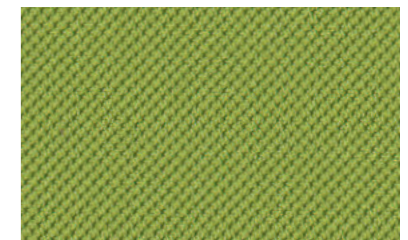
30

seegrün / sea green /
vert d'eau / zeegroen



43

hellblau / light blue / bleu clair /
lichtblauw



34

apfelgrün / apple green /
vert pomme / applegroen

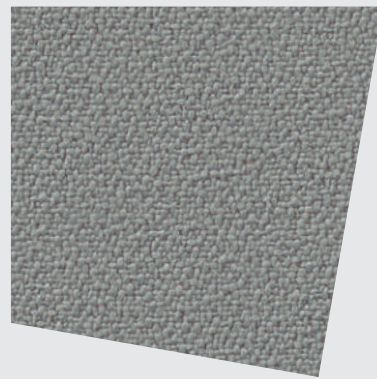
ECONOMY 20

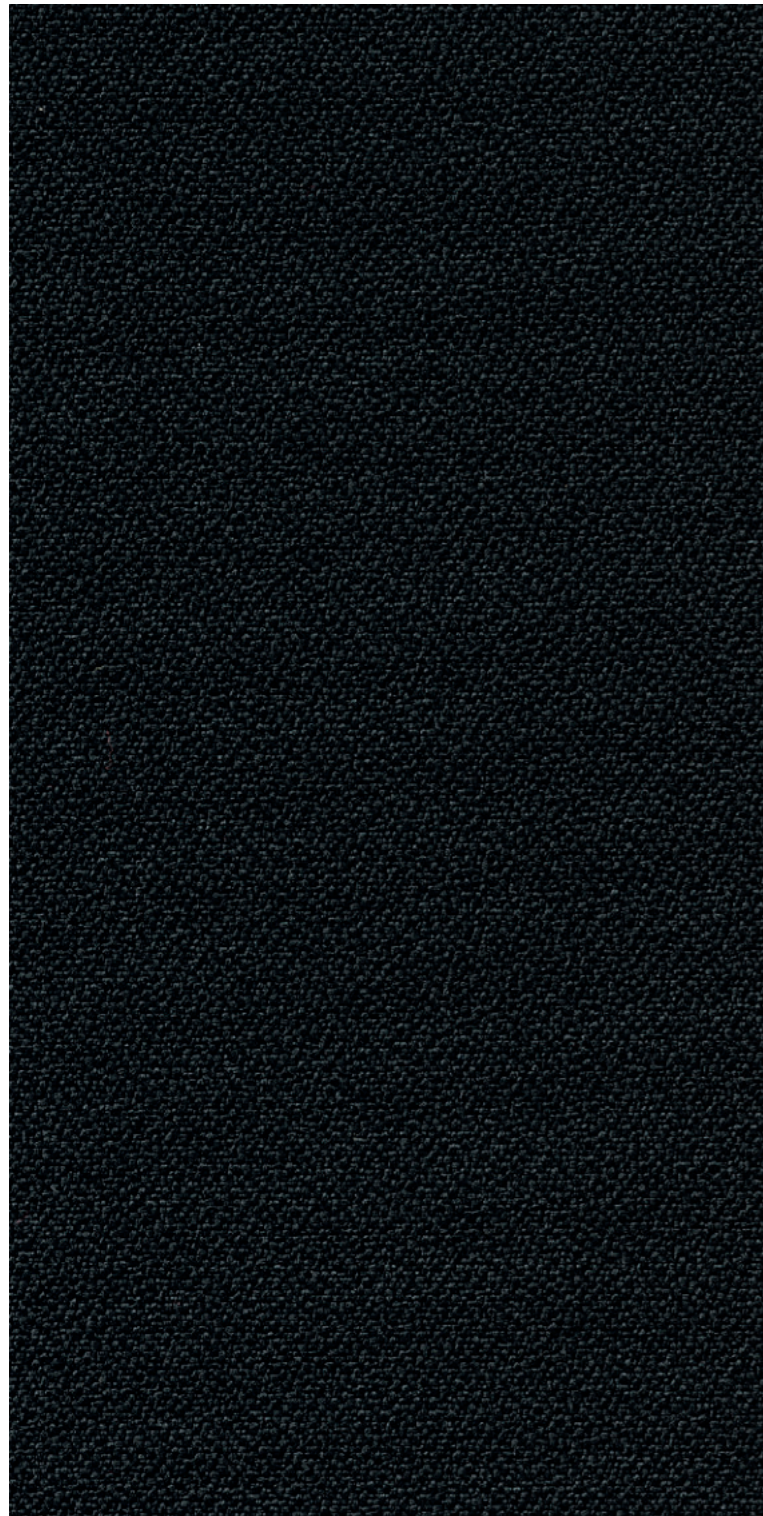
Stoffe Sitzmöbel und
modulare Loungesysteme

Fabrics Seating and
modular lounge systems

Tissus Sièges et
systèmes lounge modulaires

Stoffen Zitmeubilair en
modulaire loungesystemen



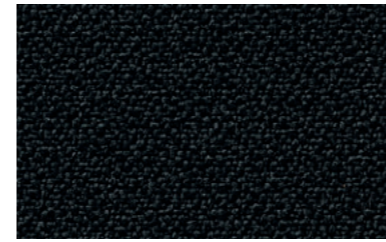


Xtreme, Camira
100 % recyceltes Polyester
 Breite 140 cm, Längengewicht ca. 310 g/qm.
 Scheuerfestigkeit über 100.000 Scheuertouren
 nach Martindale
 Schwer entflammbar nach DIN 4102 B1
 EU Ecolabel
 Schadstofffrei nach Öko-TEX
**Zur Kombination mit Raumgliederungs-
 elementen empfehlen wir die Stoffgruppe 81.**

Xtreme, Camira
100 % recycled polyester
 140 cm wide, approx. weight 310 g/qm
 Wear resistance tested to over 100.000 rub
 cycles on the Martindale test
 Low flammability, class DIN 4102 B1
 EU Ecolabel
 Free of harmful substances in acc. with Oeko-TEX
**For combination with screens, we recommend
 the use of fabric group 81.**

Xtreme, Camira
100 % polyester recyclé
 Largeur 140 cm, poids au mètre linéaire env. 310 g
 Résistance à l'usure : plus de 100.000 tours
 Martindale
 Difficilement inflammable selon DIN 4102 B1
 écolabel UE
 Exempt de substances toxiques selon
 le label « Öko-TEX »
**Nous recommandons le groupe de tissus 81
 pour combiner avec les cloisons modulaires.**

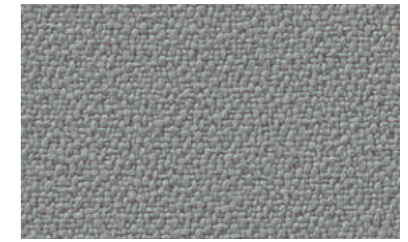
Xtreme, Camira
100 % gerecycled polyester
 140 cm breed, gewicht ca. 310 per
 strekkende meter
 Slijtvastheid 100.000 toeren Martindale
 Moeilijk ontvlambaar,
 volgens DIN 4102 B1-voorschriften
 voldoet aan het Europees ecolabel
 Vrij van schadelijke stoffen conform Eco-TEX
**Voor de combinatie met scheidingswanden
 raden wij stofgroep 81 aan.**



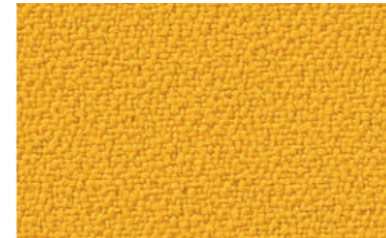
62
 schwarz / black / noir / zwart



91
 anthrazit / anthracite / anthracite /
 antraciet



53
 grau / grey / gris / grijs



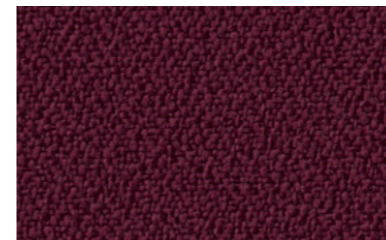
71
 gelb / yellow / jaune / geel



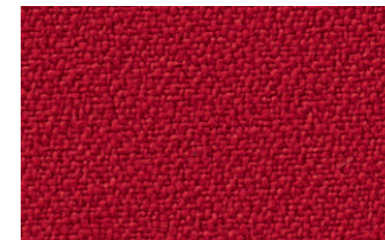
70
 ocker / ochre / ocre / oker



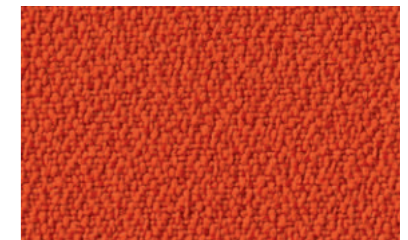
25
 beige / beige / beige / beige



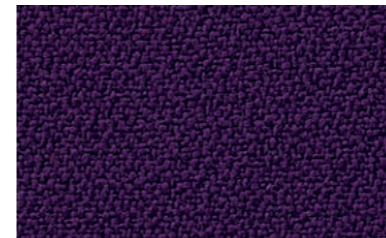
66
 kirschrot / cherry red /
 rouge cerise / kersenrood



61
 dunkelrot / dark red /
 rouge foncé / donkerrood



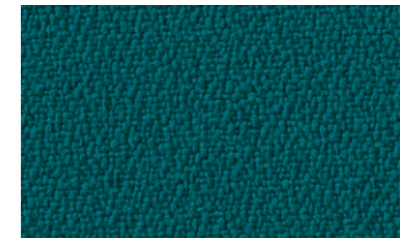
82
 orange / orange / orange / oranje



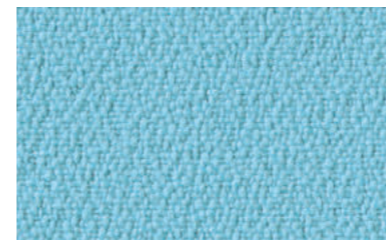
68
 pflaume / plum / prune / pruim



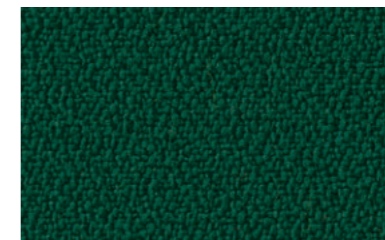
41
 mittelblau / medium blue /
 bleu moyen / middelblauw



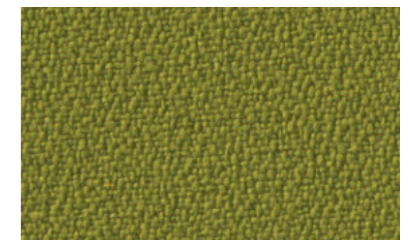
46
 türkisblau / turquoise blue /
 bleu turquoise / turkooisblauw



48
 wasserblau / water blue /
 bleu aquatique / waterblauw



33
 dunkelgrün / dark green /
 vert foncé / donkergroen



35
 olivgrün / olive green /
 vert olive / olijfgroen

Die individuelle Zuordnung zu den verschiedenen Programmen/Elementen ist in den Preisunterlagen definiert. Mögliche Farbabweichungen vom Original sind drucktechnisch bedingt.

The individual assignment to the various programmes/elements is defined in the price lists. Possible colour deviations from the original are due to printing.

L'appartenance individuelle aux différents programmes/éléments est définie dans la documentation sur les prix. Pour des raisons de technique d'impression, les couleurs peuvent varier par rapport aux originaux.

De individuele bepaling voor de verschillende pro-gramma's/elementen is in de prijsbijlagen omschreven. Eventuele kleurafwijkingen met het origineel zijn vanwege drucktechnisch redenen niet te vermijden.

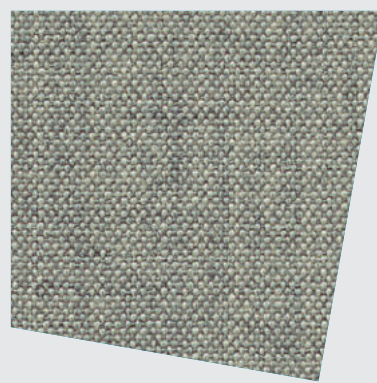
STANDARD 22

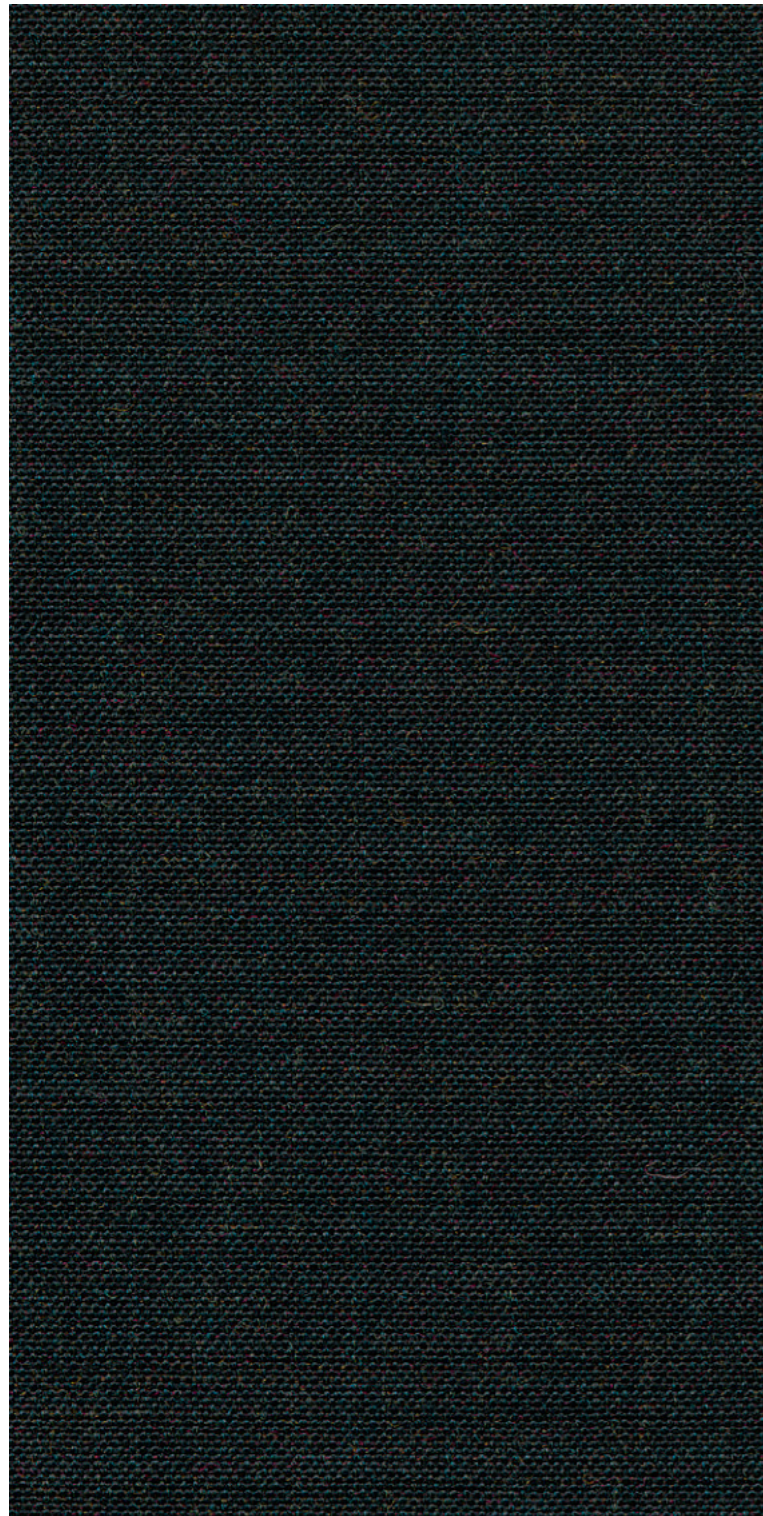
Stoffe Sitzmöbel und
Raumsysteme

Fabrics Seating and
room systems

Tissus Sièges et cloisons
toutes portantes

Stoffen Zitmeubilair en
wandsysteemen





Remix 2, Kvadrat
90 % Schurwolle, 10 % Nylon

Breite 138 cm, Längengewicht ca. 415 g/lf. M.
Scheuerfestigkeit über 100.000 Scheuertouren
nach Martindale
Brandverhalten getestet nach DIN EN 1021,
Teil 1 und 2
EU Ecolabel

Remix 2, Kvadrat
90 % pure wool, 10 % nylon

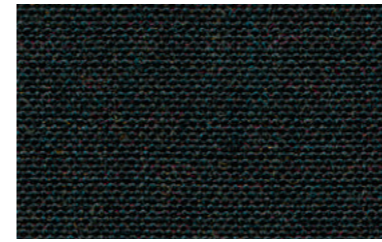
138 cm wide, approx. weight 415 g/lm
Wear resistance tested to over 100.000 rub
cycles on the Martindale test
Flammability tested to DIN EN 1021,
part 1 and 2
EU Ecolabel

Remix 2, Kvadrat
90 % laine vierge, 10 % nylon

Largeur 138 cm, poids au mètre linéaire env. 415 g
Résistance à l'usure: plus de 100.000 tours
Martindale
Comportement au feu testé selon DIN EN 1021,
parties 1 et 2
écolabel UE

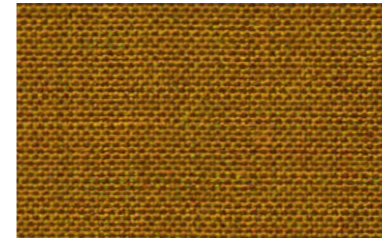
Remix 2, Kvadrat
90 % scheerwol, 10 % nylon

138 cm breed, gewicht ca. 415 per
strekende meter
Slijtvastheid 100.000 toeren Martindale
Gestest op brandwerendheid volgens
DIN EN 1021, deel 1 en 2
Voldoet aan het Europees ecolabel



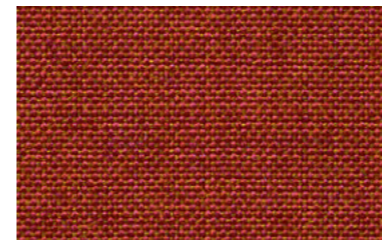
62

schwarz / black / noir / zwart



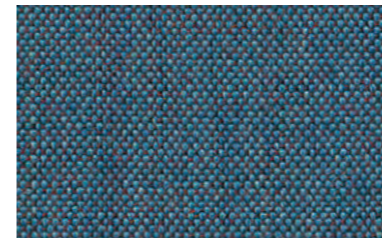
70

ocker / ochre / ocre / oker



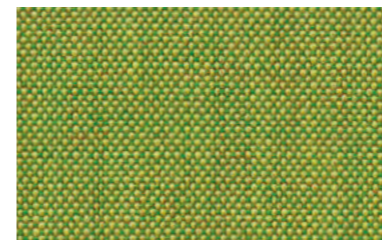
60

rot / red / rouge / rood



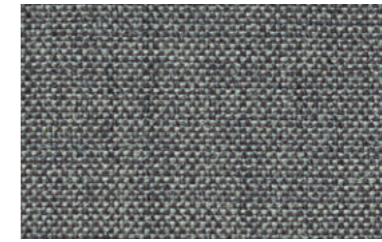
41

mittelblau / medium blue /
bleu moyen / middelblauw



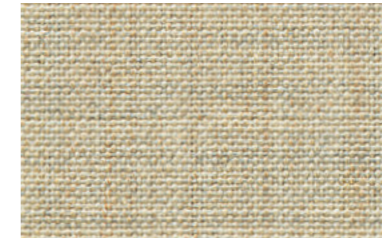
34

apfelgrün / apple green /
vert pomme / appelgroen



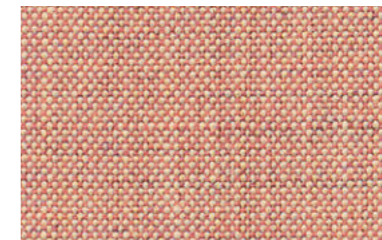
53

hellgrau / light grey / gris clair /
lichtgrijs



28

hellbeige / light beige /
beige clair / lichtbeige



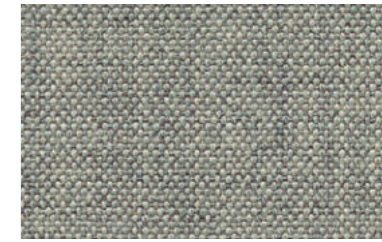
85

rosé / rose / rosé / roze



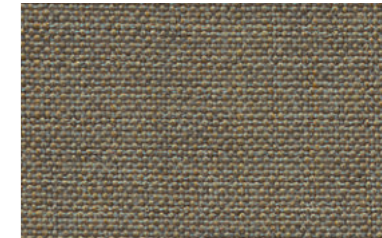
48

wasserblau / water blue /
bleu aquatique / waterblauw



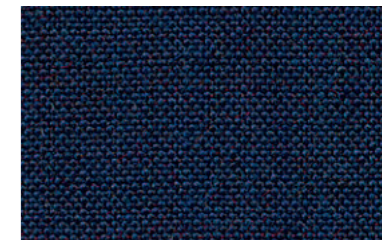
57

grau / grey / gris / grijs



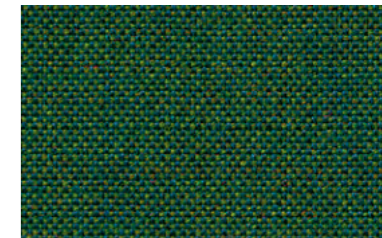
25

beige / beige / beige / beige



45

dunkelblau / dark blue /
bleu foncé / donkerblauw



33

dunkelgrün / dark green /
vert foncé / donkergroen

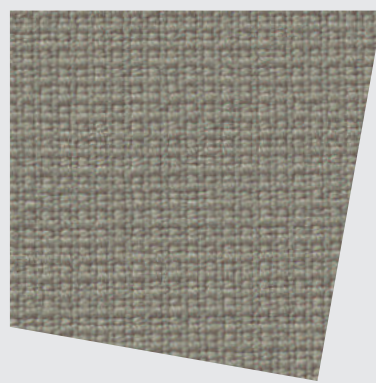
STANDARD 28

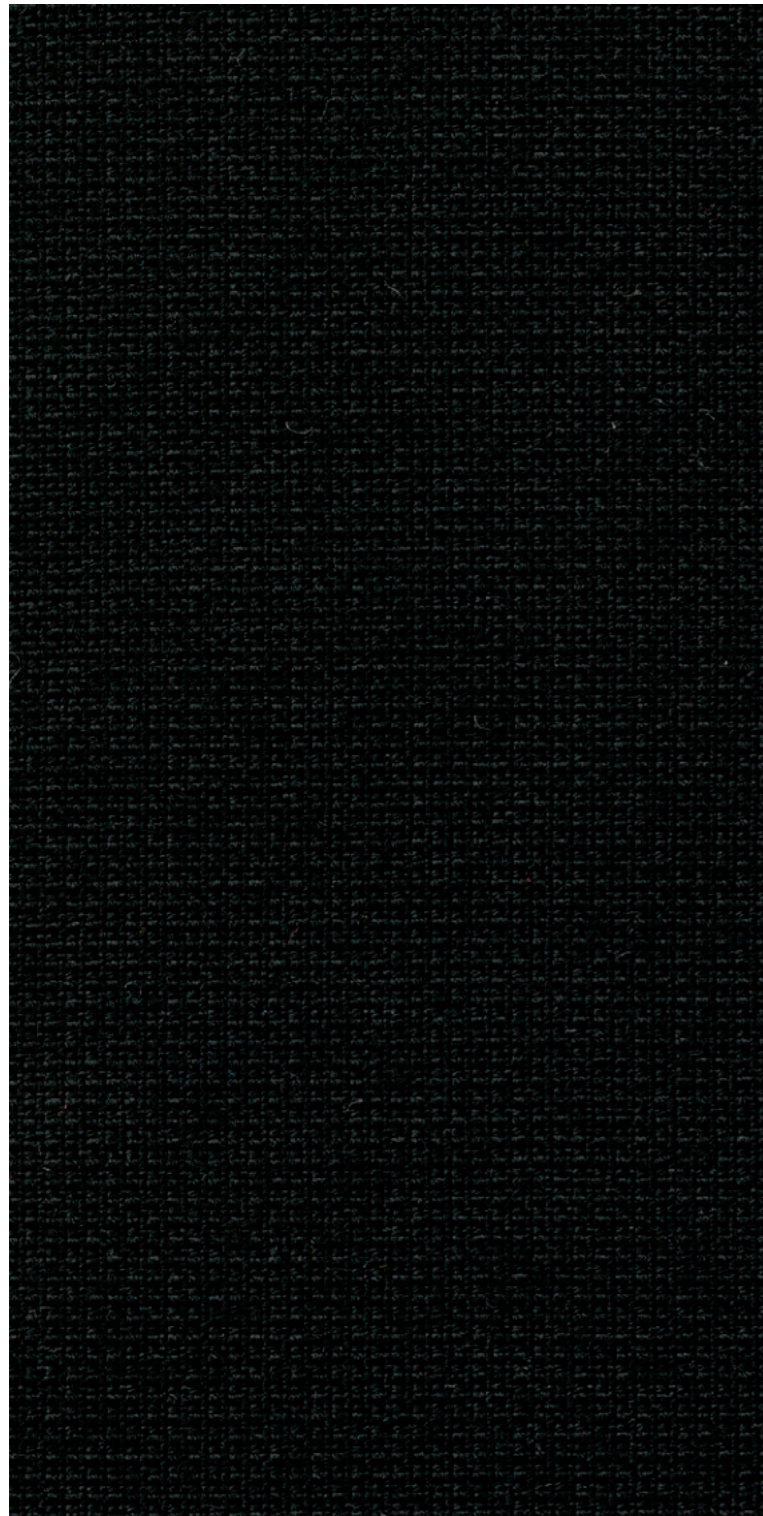
Stoffe Sitzmöbel, Raumsysteme
und modulare Loungesysteme

Fabrics Seating, room systems
and modular lounge systems

Tissus Sièges, cloisons toutes
portantes et systèmes lounge
modulaires

Stoffen Zitmeubilair, wandsysteemen
en modulaire loungesystemen





Fame, Gabriel
95 % Neuseelandwolle, 5 % Polyamid
 Breite 140 cm, Längengewicht ca. 630 g/lfd. M.
 Scheuerfestigkeit über 200.000 Scheuertouren
 nach Martindale
 Brandverhalten getestet nach DIN EN 1021,
 Teil 1 und 2
 Schadstofffrei nach Öko-TEX
 100 % schwermetallfrei
 EU Ecolabel

Fame, Gabriel
95 % New Zealand wool, 5 % polyamide
 140 cm wide, approx. weight 630 g/lm
 Wear resistance tested to over 200.000 rub
 cycles on the Martindale test
 Flammability tested to DIN EN 1021,
 part 1 and 2
 Free of harmful substances in acc. with Oeko-TEX
 100 % free of heavy metals
 EU Ecolabel

Fame, Gabriel
95 % laine de Nouvelle-Zélande, 5 % polyamide
 Largeur 140 cm, poids au mètre linéaire env. 630 g
 Résistance à l'usure: plus de 200.000 tours
 Martindale
 Comportement au feu testé selon DIN EN 1021,
 parties 1 et 2
 Exempt de substances toxiques selon le
 label « Öko-TEX »
 100 % exempt de métaux lourds
 ecolabel UE

Fame, Gabriel
95 % Nieuw-Zeelandse wol, 5 % polyamide
 140 cm breed, gewicht ca. 630 per
 strekkende meter
 Slijtvastheid 200.000 toeren Martindale
 Gestest op brandwerendheid volgens
 DIN EN 1021, deel 1 en 2
 Vrij van schadelijke stoffen conform Eco-TEX
 100 % vrij van zware metalen
 Voldoet aan het Europees ecolabel



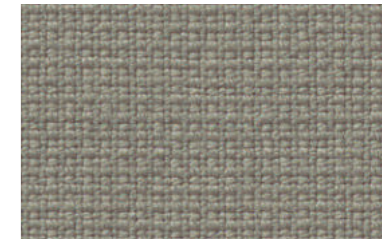
62

schwarz / black / noir / zwart



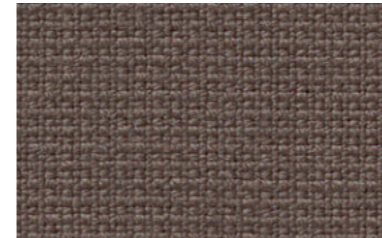
91

anthrazit / anthracite / anthracite /
antraciet



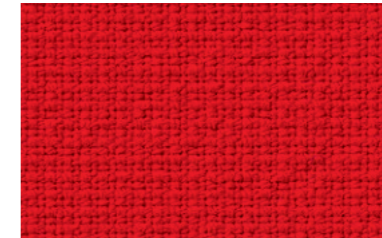
53

hellgrau / light grey / gris clair /
lichtgrijs



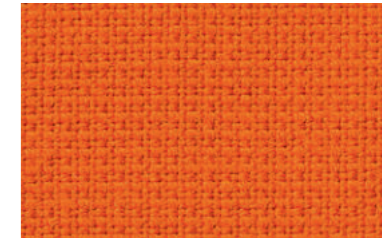
29

dunkelbeige / dark beige /
beige foncé / donkerbeige



60

rot / red / rouge / rood



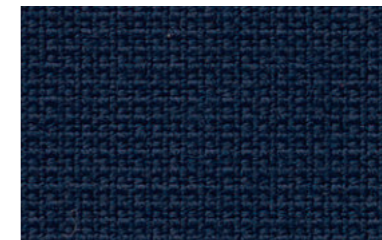
82

orange / orange / orange / oranje



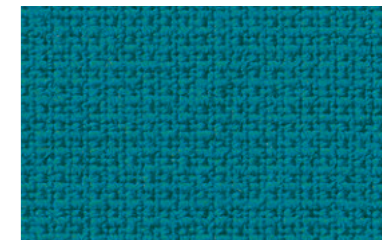
85

rosé / rose / rosé / roze



42

dunkelblau / dark blue /
bleu foncé / donkerblauw



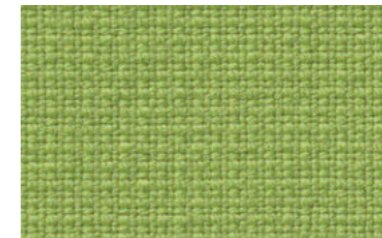
46

türkisblau / turquoise blue /
bleu turquoise / turkooisblauw



33

dunkelgrün / dark green /
vert foncé / donkergroen



34

apfelgrün / apple green /
vert pomme / applegroen

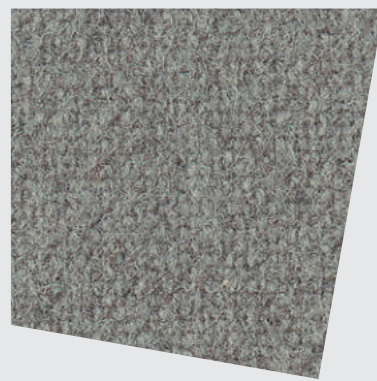
COMFORT 31

Stoffe Sitzmöbel und
modulare Loungesysteme

Fabrics Seating and
modular lounge systems

Tissus Sièges et
systèmes lounge modulaires

Stoffen Zitmeubilair en
modulaire loungesystemen





TONUS 4, Kvadrat
90 % Schurwolle, 10 % Helanca
 Breite ca. 140 cm, Längengewicht ca. 665 g/lfd. M.
 Scheuerfestigkeit über 100.000 Scheuertouren
 nach Martindale
 Brandverhalten getestet nach DIN EN 1021,
 Teil 1 und 2
 EU-Ecolabel

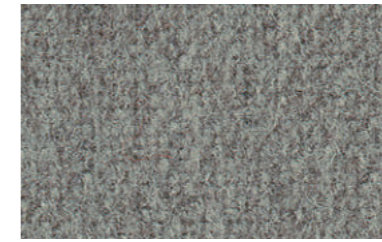
TONUS 4, Kvadrat
90 % virgin wool, 10 % Helanca
 Approx. 140 cm wide, approx. weight 665 g/lm
 Wear resistance tested to over 100.000 rub
 cycles on the Martindale test
 Flammability tested to DIN EN 1021,
 parts 1 and 2
 EU Ecolabel

TONUS 4, Kvadrat
90 % laine vierge, 10 % Helanca
 Largeur : environ 140 cm, poids au mètre :
 environ 665 g / ml
 Résistance à l'usure : plus de 100.000 tours
 Martindale
 Comportement au feu testé selon la
 norme DIN EN 1021, parties 1 et 2
 ecolabel UE

TONUS 4, Kvadrat
90 % zuiver scheerwol, 10 % Helanca
 Breedte ca. 140 cm, gewicht per
 strekkende meter ca. 665 g
 Slijtvastheid 100.000 toeren Martindale
 Brandgedrag getest volgens DIN EN 1021,
 deel 1 en 2
 Voldoet aan het Europees ecolabel



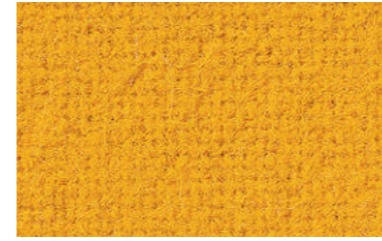
62
 schwarz / black / noir / zwart



56
 mittelgrau melange /
 medium grey melange /
 mélange gris mouyen /
 middelgrijs melange



72
 gelb melange / yellow melange /
 mélange jaune / geel melange



71
 gelb / yellow / jaune / geel



21
 dunkelbeige melange /
 dark beige melangee /
 mélange beige foncé /
 donkerbeige melange



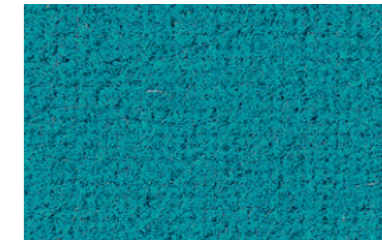
23
 beige melange / beige melange /
 mélange beige / beige melange



61
 dunkelrot / dark red / rouge foncé /
 donkerrood



81
 orange melange / orange melange /
 mélange orange / oranje melange



46
 türkischblau / turquoise blue /
 bleu turquoise / turkooisblauw



43
 hellblau / light blue / bleu clair /
 lichtblauw



31
 hellgrün / light green /
 vert clair / lichtgroen

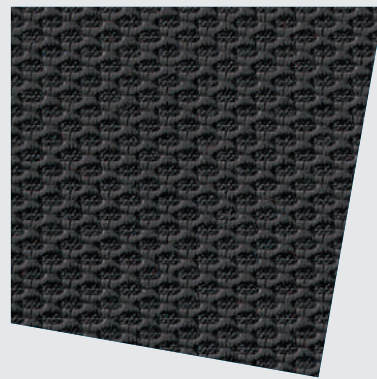
COMFORT 34

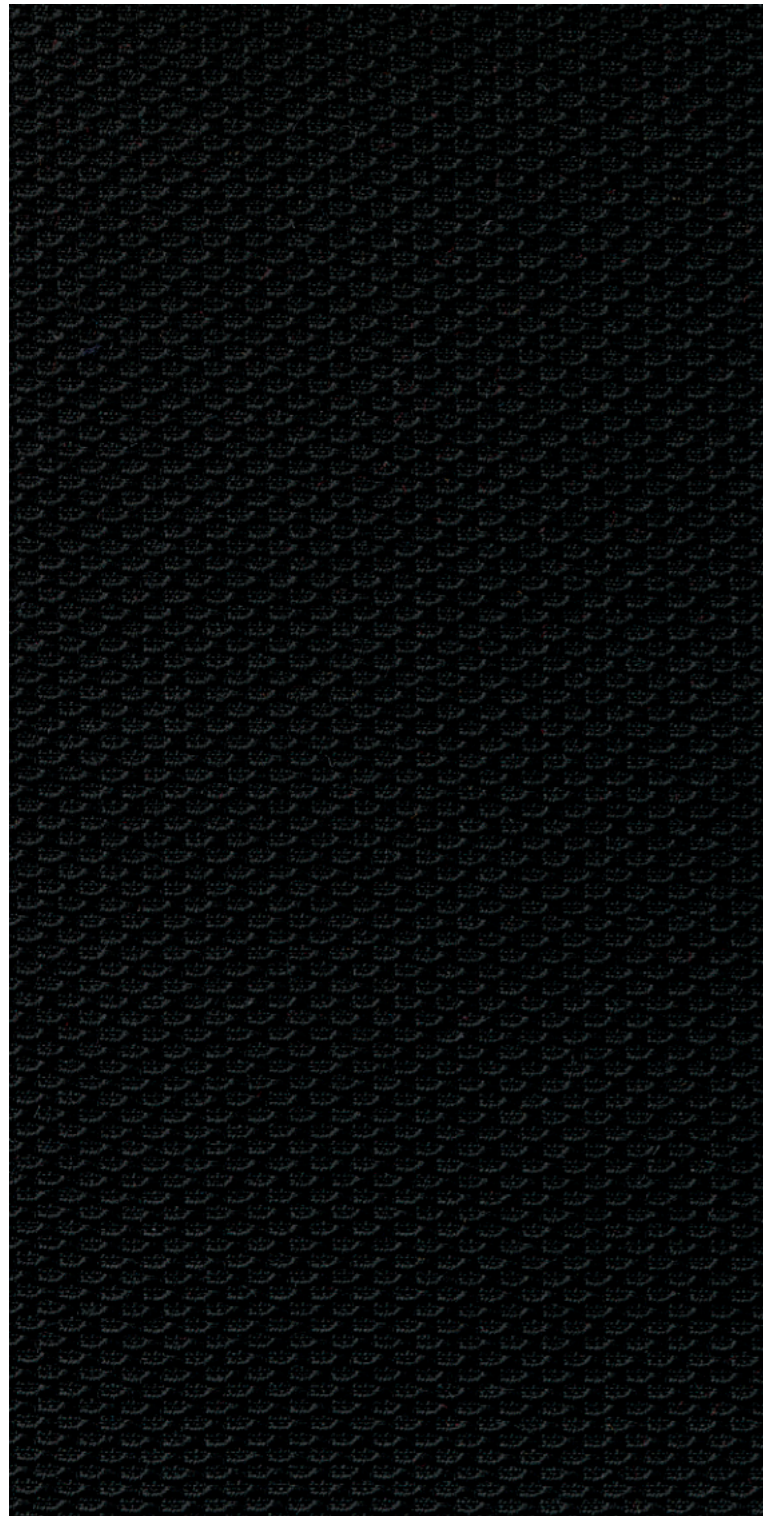
Stoffe Sitzmöbel

Fabrics Seating

Tissus Sièges

Stoffen Zitmeubilair





Ultra, Climatex
72 % Cradura™, PA, 16 % Certified Virgin Wool,
12 % Redesigned Lenzing FR™

Breite ca. 140 cm, Längengewicht ca. 437 g/lfd. M.
 Scheuerfestigkeit über 500.000 Scheuertouren
 nach Martindale
 Brandverhalten getestet nach DIN EN 1021,
 Teil 1 und 2
 Schadstofffrei: cradle to cradle
 Feuchtigkeitsreduktion, Temperatenausgleichend,
 Anti-Rutsch-Wirkung, Schallabsorbition

Ultra, Climatex
72 % Cradura™, PA, 16 % Certified Virgin Wool,
12 % Redesigned Lenzing FR™

Approx. 140 cm wide, approx. weight 437 g/lm
 Wear resistance tested to over 500.000 rub
 cycles on the Martindale test
 Flammability tested to DIN EN 1021,
 parts 1 and 2
 Free of harmful substances: cradle to cradle
 Moisture-balancing, temperature-regulating,
 anti-slip effect, sound-absorbing

Ultra, Climatex
72 % Cradura™, PA, 16 % Certified Virgin Wool,
12 % Redesigned Lenzing FR™

Largeur : environ 140 cm, poids au mètre :
 environ 437 g / ml
 Résistance à l'usure : plus de 500.000 tours
 Martindale
 Comportement au feu testé selon la
 norme DIN EN 1021, parties 1 et 2
 Exempt de substances toxiques : cradle to cradle
 Réduction de l'humidité, thermorégulation, effet
 antidérapant, absorption phonique

Ultra, Climatex
72 % Cradura™, PA, 16 % Certified Virgin Wool,
12 % Redesigned Lenzing FR™

Breedte ca. 140 cm, gewicht per
 strekkende meter ca. 437 g
 Slijtvastheid 500.000 toeren Martindale
 Brandgedrag getest volgens DIN EN 1021,
 deel 1 en 2
 Vrij van schadelijke stoffen: cradle to cradle
 Vochtreductie, temperatuurcompensatie,
 antislip-effect, geluidsabsorptie



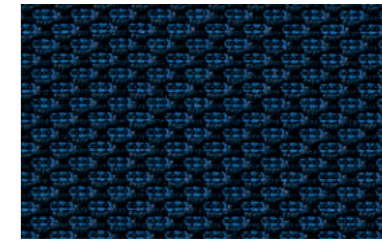
62

schwarz / black / noir / zwart



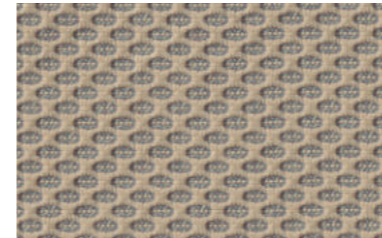
91

anthrazit / anthracite / anthracite /
 antraciet



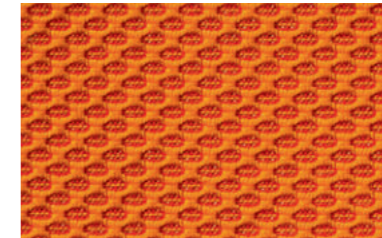
42

dunkelblau / dark blue /
 bleu foncé / donkerblauw



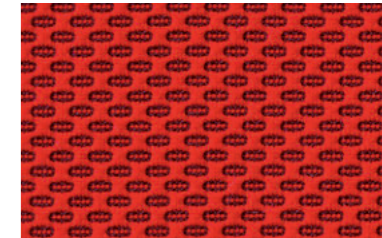
25

beige / beige / beige / beige



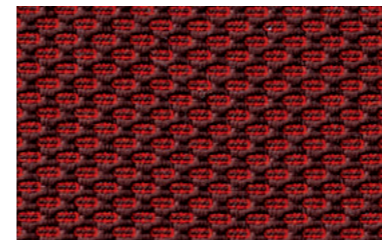
82

orange / orange / orange / oranje



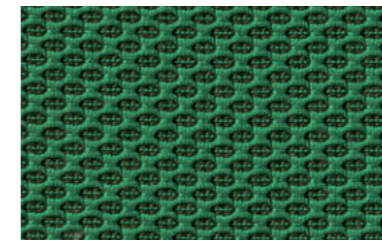
60

rot / red / rouge / rood



61

dunkelrot / dark red / rouge foncé /
 donkerrood



33

dunkelgrün / dark green /
 vert foncé / donkergroen

COMFORT

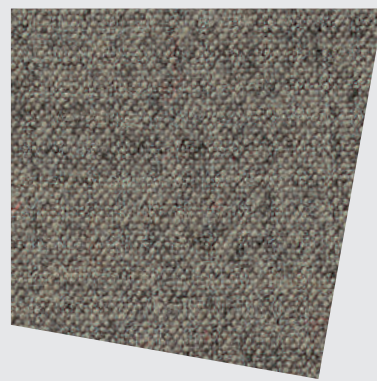
39

Stoffe Sitzmöbel, Raumsysteme und modulare Loungesysteme

Fabrics Seating, room systems and modular lounge systems

Tissus Sièges, cloisons toutes portantes et systèmes lounge modulaires

Stoffen Zitmeubilair, wandsystemen en modulaire loungesystemen





**Melange Nap, Kvadrat
90 % Wolle, 10 % Nylon**

Breite ca. 140 cm, Längengewicht ca. 440 g/lfd. M.
Scheuerfestigkeit über 60.000 Scheuertouren
nach Martindale
Brandverhalten getestet nach DIN EN 1021,
Teil 1 und 2
Schadstofffrei: Entspricht den Vorschriften
nach REACH

**Melange Nap, Kvadrat
90 % wool, 10 % nylon**

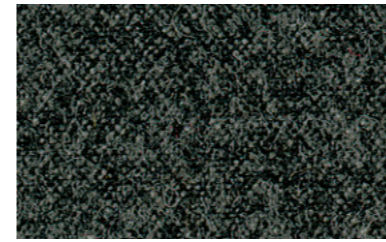
Approx. 140 cm wide, approx. weight 440 g/lm
Wear resistance tested to over 60.000 rub rub
cycles on the Martindale test
Flammability tested to DIN EN 1021,
parts 1 and 2
Free of harmful substances: complies with
REACH regulations

**Melange Nap, Kvadrat
90 % laine vierge, 10 % nylon**

Largeur : environ 140 cm, poids au mètre :
environ 440 g / ml
Résistance à l'usure : plus de 60.000 tours
Martindale
Comportement au feu testé selon la
norme DIN EN 1021, parties 1 et 2
Exempt de substances toxiques :
Satisfait aux prescriptions REACH

**Melange Nap, Kvadrat
90 % wol, 10 % nylon**

Breedte ca. 140 cm, gewicht per
streckende meter ca. 440 g
Slijtvastheid 60.000 toeren Martindale
Brandgedrag getest volgens DIN EN 1021,
deel 1 en 2
Vrij van schadelijke stoffen: Voldoet aan
de REACH-voorschriften



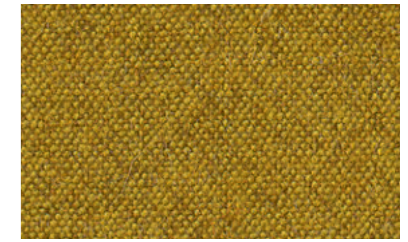
91

anthrazit / anthracite / anthracite /
antraciet



57

grau / grey / gris / grijs



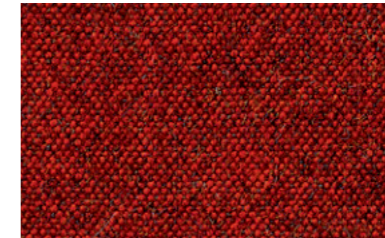
70

ocker / ochre / ocre / oker



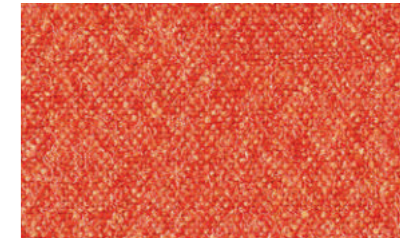
25

beige / beige / beige / beige



60

rot / red / rouge / rood



82

orange / orange / orange / oranje



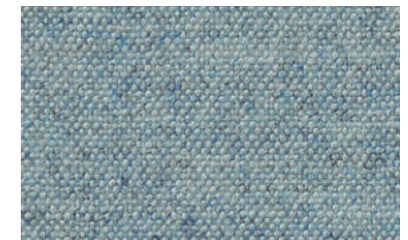
41

mittelblau / medium blue /
bleu moyen / middelblauw



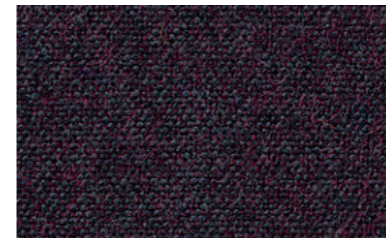
42

dunkelblau / dark blue /
bleu foncé / donkerblauw



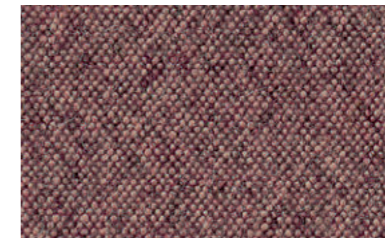
43

hellblau / light blue / bleu clair /
lichtblauw



68

pflaume / plum / prune / pruim



67

brombeer / blackberry / mûre /
bramen

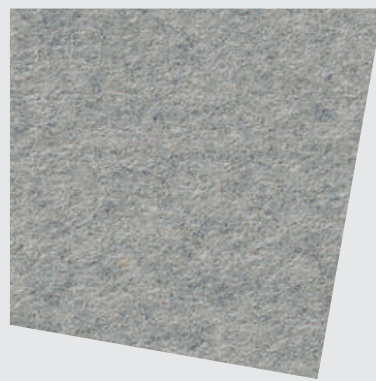
PREMIUM 46

Stoffe Sitzmöbel, Raumsysteme
und modulare Loungesysteme

Fabrics Seating, room systems
and modular lounge systems

Tissus Sièges, cloisons toutes
portantes et systèmes lounge
modulaires

Stoffen Zitmeubilair, wandsysteemen
en modulaire loungesystemen





Divina, Kvadrat
100 % reine Schurwolle

Breite 150 cm, Längengewicht ca. 840 g/lf. M.
Scheuerfestigkeit über 45.000 Scheuertouren
nach Martindale
Brandverhalten getestet nach DIN EN 1021,
Teil 1 und 2
EU Ecolabel
Sound absorption certificate

Divina, Kvadrat
100 % virgin wool

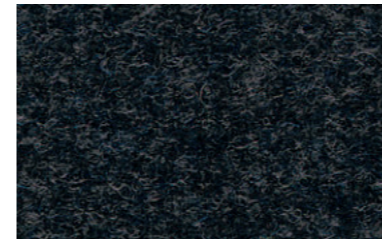
150 cm wide, approx. weight 840 g/lm
Wear resistance tested to over 45.000 rub cycles
on the Martindale test
Flammability tested to DIN EN 1021,
parts 1 and 2
EU Ecolabel
Sound absorption certificate

Divina, Kvadrat
100 % laine vierge

Largeur : 150 cm, poids au mètre :
environ 840 g/ml
Résistance à l'usure : plus de 45.000 tours
Martindale
EU Ecolabel
Comportement au feu testé selon la
norme DIN EN 1021, parties 1 et 2
Sound absorption certificate

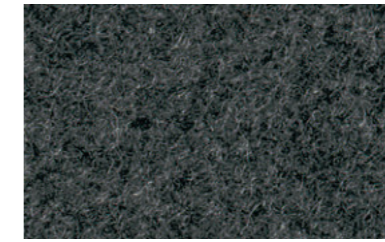
Divina, Kvadrat
100 % zuiver scheerwol

Breedte 150 cm, gewicht per
streckende meter ca. 840 g
Slijtvastheid 45.000 toeren Martindale
Brandwerendheid getest volgens
norm DIN EN 1021, deel 1 en 2
EU Ecolabel
Sound absorption certificate



62

schwarz / black / noir / zwart



55

dunkelgrau / dark grey /
gris foncé / donkergrijs



53

hellgrau / light grey / gris clair /
lichtgrijs



70

ocker / ochre / ocre / oker



29

dunkelbeige / dark beige /
beige foncé / donkerbeige



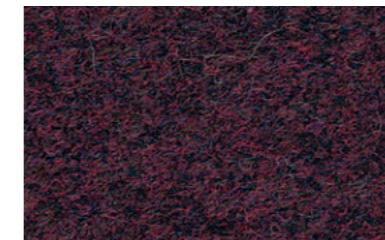
28

hellbeige / light beige /
beige clair / lichtbeige



67

brombeer / blackberry / mûre /
bramen



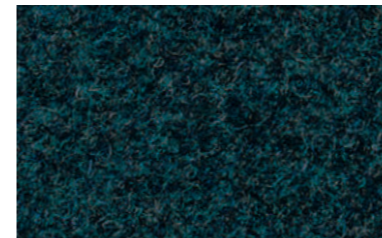
66

kirschrot / cherry red /
rouge cerise / kersenrood



85

rosé / rose / rosé / roze



49

blaugrün / blue green / bleu vert /
blauw groen



43

hellblau / light blue / bleu clair /
lichtblauw



33

dunkelgrün / dark green /
vert foncé / donkergroen



34

apfelgrün / apple green /
vert pomme / applegroen



31

hellgrün / light green /
vert clair / lichtgroen

Die individuelle Zuordnung zu den verschiedenen Programmen/Elementen ist in den Preisunterlagen definiert. Mögliche Farbabweichungen vom Original sind drucktechnisch bedingt.

The individual assignment to the various programmes/elements is defined in the price lists. Possible colour deviations from the original are due to printing.

L'appartenance individuelle aux différents programmes/éléments est définie dans la documentation sur les prix. Pour des raisons de technique d'impression, les couleurs peuvent varier par rapport aux originaux.

De individuele bepaling voor de verschillende pro-gramma's/elementen is in de prijsbijlagen omschreven. Eventuele kleurafwijkingen met het origineel zijn vanwege drucktechnisch redenen niet te vermijden.

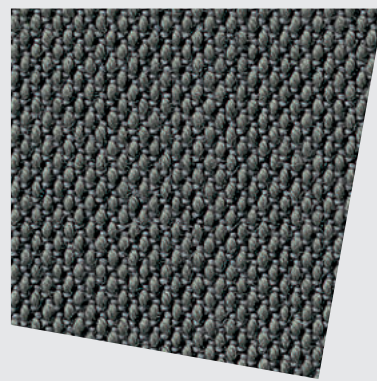
PREMIUM 49

Stoffe Sitzmöbel, Raumsysteme
und modulare Loungesysteme

Fabrics Seating, room systems
and modular lounge systems

Tissus Sièges, cloisons toutes
portantes et systèmes lounge
modulaires

Stoffen Zitmeubilair, wandsysteemen
en modulaire loungesystemen





Steelcut Trio 3, Kvadrat
90 % Schurwolle, 10 % Nylon

Breite 140 cm, Längengewicht ca. 770 g/lf. M.
 Scheuerfestigkeit über 100.000 Scheuertouren
 nach Martindale
 Brandverhalten getestet nach DIN EN 1021,
 Teil 1 und 2
 EU Ecolabel
 Sound absorption certificate

Hinweis: Dieser Stoff ist dreifarbig gewebt, sodass
 ein changierender Effekt in der Oberfläche ent-
 steht, der charakteristisch für diesen Stoff ist.

Steelcut Trio 3, Kvadrat
90 % pure wool, 10 % nylon

140 cm wide, approx. weight 770 g/m length
 Wear resistance tested to over 100.000 rub
 cycles on the Martindale test
 Flammability tested to DIN EN 1021, part 1 and 2
 EU Ecolabel
 Sound absorption certificate

Note: This fabric is woven in three colours,
 which causes variations in the finish that are
 characteristic of this fabric.

Steelcut Trio 3, Kvadrat
90 % laine vierge, 10 % nylon

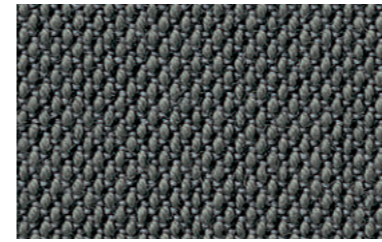
Largeur 140 cm, poids au mètre linéaire env. 770 g
 Résistance à l'usure: plus de 100.000 tours
 Martindale
 Comportement au feu testé selon DIN EN 1021,
 parties 1 et 2
 EU Ecolabel
 Sound absorption certificate

Nota: le tissage à partir de fils de trois couleurs
 confère à la surface de ce tissu un effet changeant,
 caractéristique.

Steelcut Trio 3, Kvadrat
90 % scheerwol, 10 % nylon

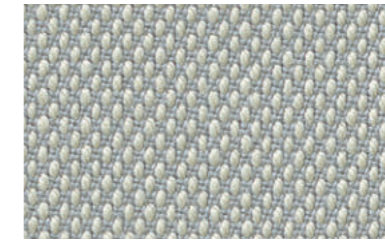
140 cm breed, gewicht ca. 770 per strekkende meter
 Slijtvastheid 100.000 toeren Martindale
 Gestest op brandwerendheid volgens
 DIN EN 1021, deel 1 en 2
 EU Ecolabel
 Sound absorption certificate

Aanwijzing: Deze stof is geweven in drie kleuren,
 zodat je een veranderend effect in het oppervlak
 krijgt, dat karakteristiek is voor deze stof.



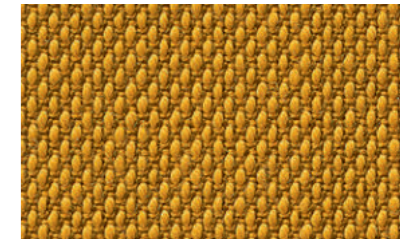
52

mittelgrau / medium grey /
 gris moyen / middelgrijs



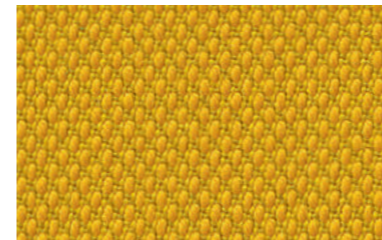
53

hellgrau / light grey / gris clair /
 lichtgrijs



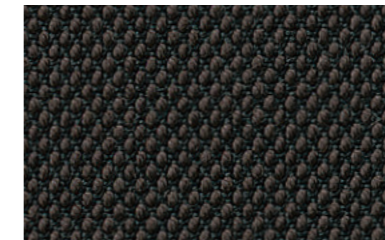
70

ocker / ochre / ocre / oker



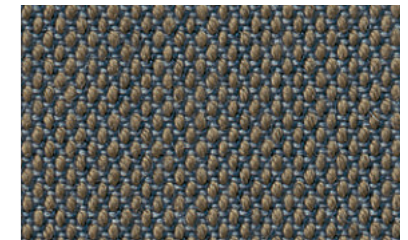
71

gelb / yellow / jaune / geel



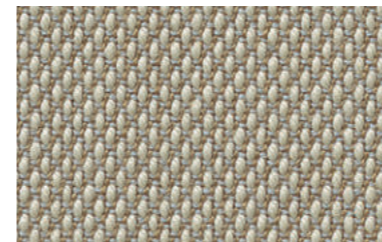
75

dunkelbraun / dark brown /
 brun foncé / donkerbruin



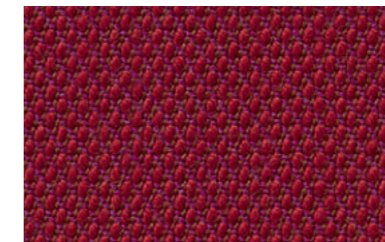
29

dunkelbeige / dark beige /
 beige foncé / donkerbeige



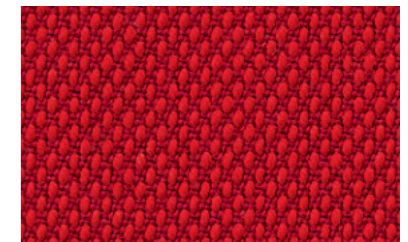
25

beige / beige / beige / beige



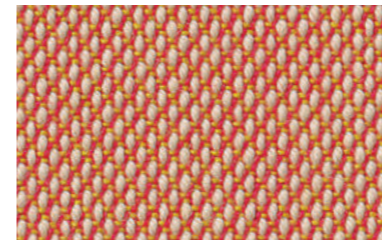
61

dunkelrot / dark red / rouge foncé /
 donkerrood



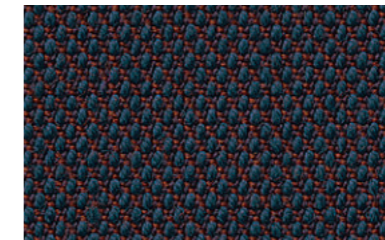
69

hellrot / light red / rouge clair /
 lichtrood



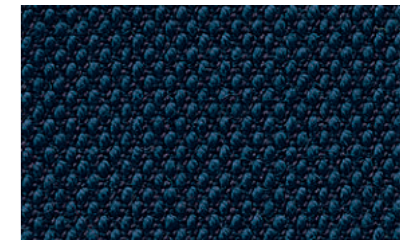
83

orangebeige / orange-beige /
 orange beige / oranjebeige



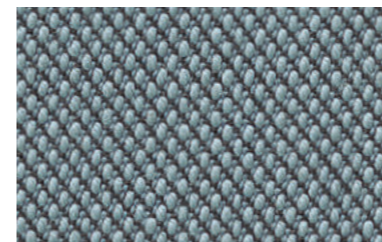
44

blaurot / blue-red / bleu rouge /
 blauw rood



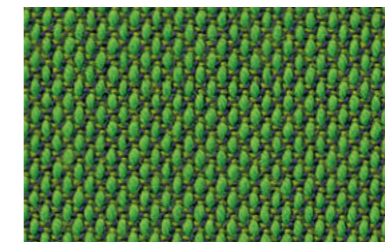
42

dunkelblau / dark blue /
 bleu foncé / donkerblauw



48

wasserblau / water blue /
 bleu aquatique / waterblauw



31

hellgrün / light green /
 vert clair / lichtgroen