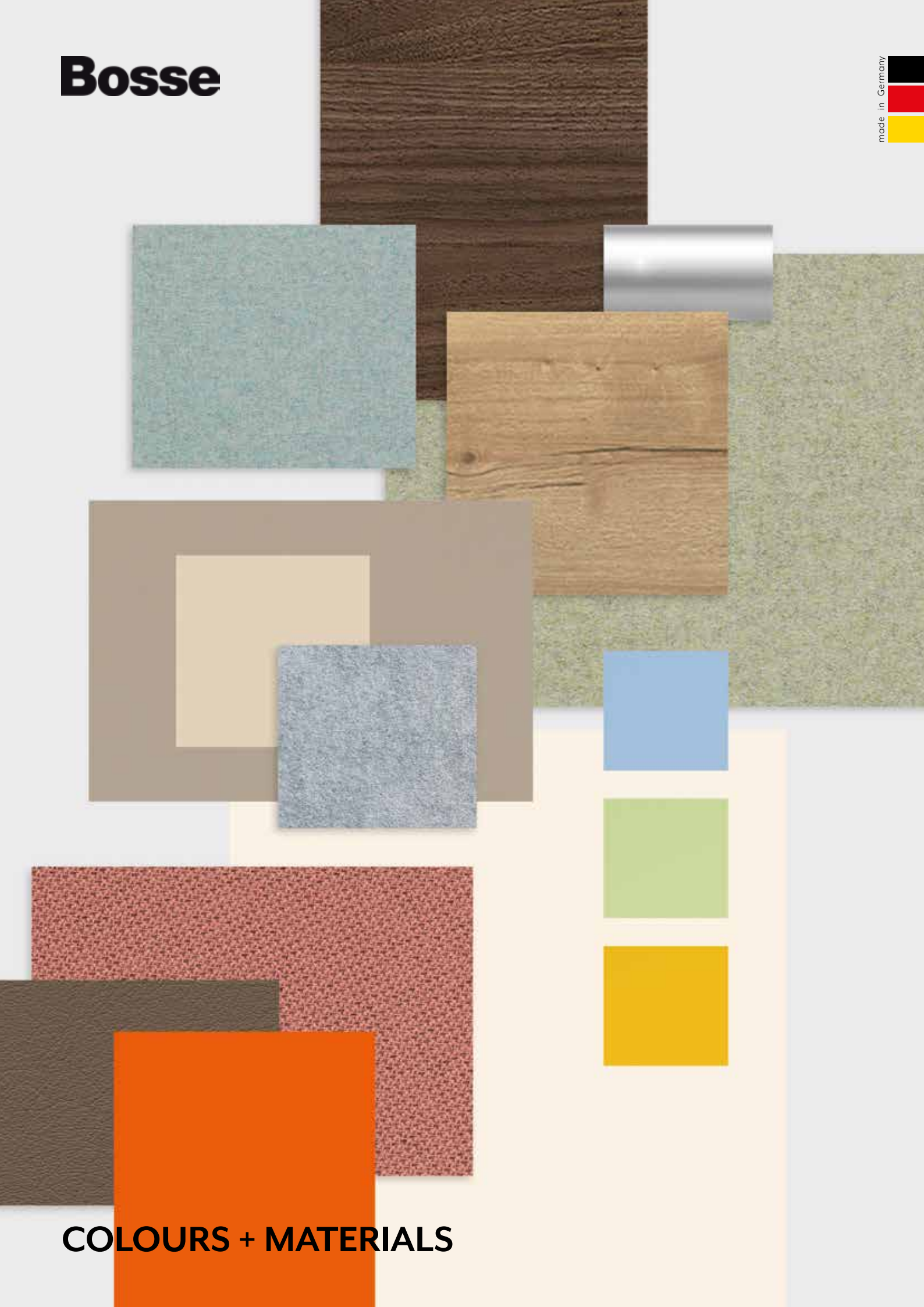


# Bosse

made in Germany



## COLOURS + MATERIALS



# A WORLD OF COLOURS AND MATERIALS

Bosse entwickelt individuelle und nachhaltige Lösungen für die Arbeits- und Wohnwelten von heute und morgen. Die Bosse Systeme modul space und human space cube bestechen durch eine große Vielfalt bei der Materialauswahl. Ob Uni- oder Holzdekor, glänzende und seidematte Lacktöne, edle Echtholzoberflächen, Paneele in verschiedenen Glasqualitäten mit und ohne Farb- oder Fotofolien: Verleihen Sie Bosse-Möbeln und Raum-in-Raum-Systemen Ihre persönliche Note.

Bosse develops sustainable, ergonomic solutions for the working and living environments of today and tomorrow. The Bosse systems modul space and human space cube captivates with a great variety of materials to choose from. Whether you opt for uni or a wood finish, glossy and silky matt lacquered shades, fine real-wood surfaces, panels in various types of glass either with or without coloured or photographic films, you can give Bosse furniture and room-in-room systems your own personal touch.

## ROHRFARBEN | TUBE COLOURS

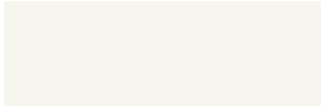


**CHRO** Chrom | Chrom

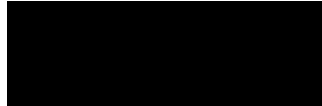


**BLAC** Schwarz | Black

## MELAMIN UNI | MELAMIN UNI (PG A)



**WEIS** Weiß | White



**SCHW** Vulkanschwarz VV | Volcano black VV



**ANTR** Anthrazit | Anthracite



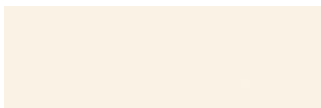
**BASG** Basaltgrau | Basalt grey



**GRAU** Lichtgrau | Light grey



**SILB** Silber | Silver



**CREM** Creme winterweiß | Creme winter white



**CONG** Congo | Congo

## LACKFARBEN | LACQUER COLOURS (PG E)



**0001** Ecrü | ecrü



**0002** Kitt | cement



**0004** Anthrazit | anthracite



**0013** Congo | Congo



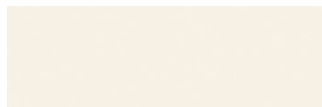
**0010** Grau | Grey



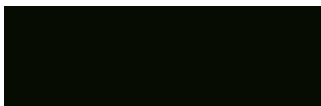
**0014** Basaltgrau | Basalt grey



**9011** Schwarz | Black



**9010H** Hochglanz reinweiß | High polish pure white (E+ 35%)



**9011H** Hochglanz schwarz | High polish black (E+ 35%)

## HOLZDEKORE | WOOD FINISH (PG B)



**DNUS** Dekor Nussbaum | Decor Walnut



**DEIH** Dekor Eiche Halifax | Decor Halifax oak



**DAHO** Dekor Ahorn | Decor Maple



**DEIL** Dekor Eiche hell | Decor Light oak

## ECHTHOLZ FURNIERE | REAL WOOD VENEERS (PG C)



**KIRS** Kirsche | Cherry



**NUSS** Nussbaum | Walnut



**EICH** Eiche hell | Light oak



**EIGR** Eiche grau | Grey oak



**ESCH** Esche schwarz | Black ash



**AHOR** Ahorn natur | Natural maple



**BUCH** Buche natur | Natural beech



**EIFA** Eiche Fango (patiniert) | Oak Fango



**ESHA** Esche Hazienda schwarz (patiniert) | Ash hazienda black

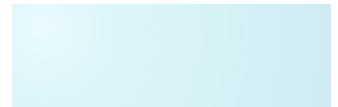


**EIPA** Eiche Platin (patiniert) | Oak Platinum

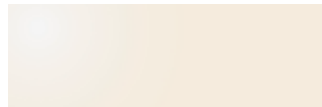
## GLAS | GLASS



**GLWE** Weißglas | White glass (PG H)



**LWEI** Weißglas lackiert | White glass (PG N)



**GLST** Weißglas satiniert | White glass with satin finish (PG G)



**N063** Weißglas foliert | Translucent film-coated (PG Q)



**GLAS** Klarglas | Clear glass (PG F)

**RAL FARBEN\* | RAL COLOURS\* (PG E)**



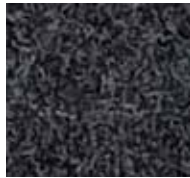
\* Weitere RAL Farben auf Anfrage | Other RAL colours on request

**PREISGRUPPE | PRICE GROUP SX**

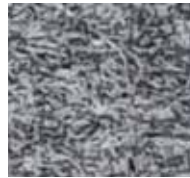
**FELT NEOTEX**

Felzmaterial mit hoher akustischer Wirksamkeit (10 mm Stärke).  
 Zusammensetzung: bis zu 50% Recycling-Fasern  
 Stärke: 10 mm  
 Akustik: Schallabsorptionsgrad A, DIN EN ISO 354  
 Brandverhalten: schwerentflammbar B-s1 d0

Felt material with high acoustic efficiency (10 mm thickness).  
 Composition: up to 50 % recycled fabric  
 Thickness: 10 mm  
 Acoustics: Sound absorption coefficient A, DIN EN ISO 354  
 Flammability: flame retardant B-s1 d0



**ANTZ** Anthrazit | Anthracite



**GRAN** Granit | Granite



**MARH** Marmor hell | Marble light



POLYCHROMIE ARCHITECTURALE

# VIVE LA COULEUR



Mit der Polychromie Architecturale erfand Le Corbusier ein geniales Farbsystem. Jeder Ton ist der Natur entnommen und hat eine individuelle psychologische Relevanz. Die Leitsätze des Visionärs zur Farbwirkung sind bis heute von Bedeutung: Farbe modifiziert den Raum, klassifiziert Objekte. Sie hat auch Auswirkungen auf unseren Körper und Geist. Lassen Sie sich von der Strahlkraft und Wirkung dieser Farben inspirieren. Gestalten Sie Ihr persönliches Möbelkunstwerk mit Bosse modul space in Chrom und Schwarz und 12 ausgesuchten Lacktönen aus der Polychromie Architecturale.

With the Polychromie Architecturale, Le Corbusier invented an ingenious colour system, in which all shades – derived from nature – have their own individual relevance. The visionary's guiding principles on the effect of colour are still relevant today: colour modifies space, classifies objects. It also has an impact on our mind and body. Be inspired by the radiance and effect of these colours. Create your own personal piece of furniture art with Bosse modul space in chrome and black and 12 selected lacquered shades from the Polychromy Architectural range.

## LE CORBUSIER FARBEN | LE CORBUSIER COLOURS (PG LC)



0750 LC 4320B blanc ivoire



0751 LC 32142 ombre naturelle claire



0752 LC 32013 gris clair 31



0753 LC 32011 gris 31



0754 LC 32010 gris foncé 31



0755 LC 32021 outremer moyen



0756 LC 4320K bleu outremer 59



0757 LC 4320T bleu outremer foncé



0758 LC 4320A rouge vermillon 59



0759 LC 32090 rouge vermillon 31

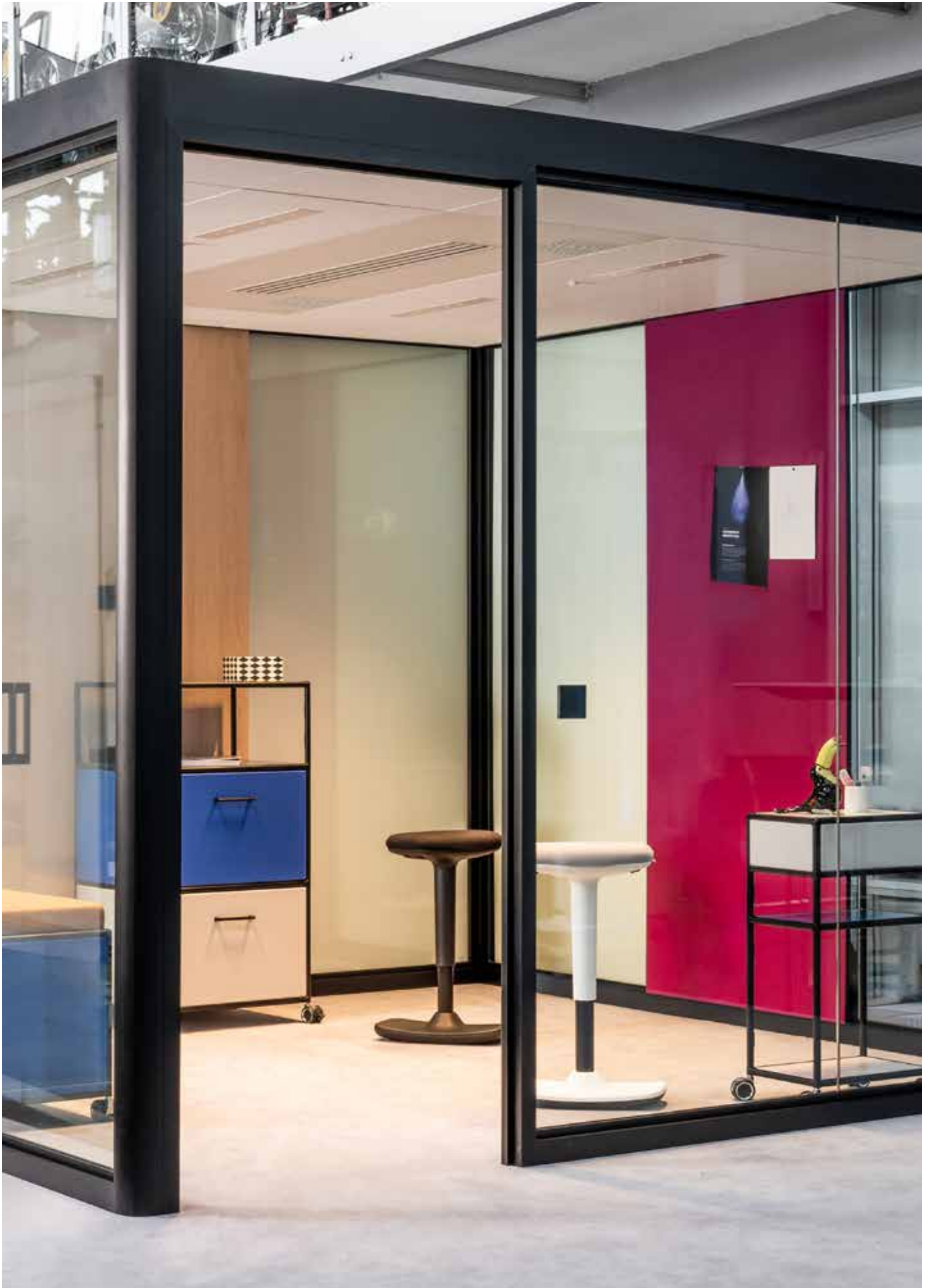


0760 LC 4320W le jaune vif



0761 LC 32053 vert jaune clair







## CUBE 4.0



Aluminium natur, C0 eloxal matt finish+  
Pure aluminium, C0 eloxal matt finish+



Aluminium schwarz, C35 eloxal matt finish+  
Aluminium black, C35 eloxal matt finish+



Panel, weiß, magnetisch  
Panel, white, magnetic

# DIVINA

Zusammensetzung: 100 % Schurwolle, Kammgarn  
Gewicht: 820 g/lfm, Breite: 150 cm  
Lichtechtheit: min. 5 (DIN EN ISO 105-B02)  
Pilling: 3 (DIN EN ISO 12945/2)  
Scheuerfestigkeit: 45.000 Touren (DIN EN ISO 12947/2)  
Brandverhalten: DIN EN 1021: Teil 1

Composition: 100 % New wool  
Weight: 820 g/lm, Width: 150 cm  
Light fastness: min. 5 (DIN EN ISO 105-B02)  
Pilling: 3 (DIN EN ISO 12945/2)  
Abrasion: 45.000 Rubs (DIN EN ISO 12947/2)  
Flame resistance: DIN EN 1021: Part 1



**032.004 (0420)**  
Currygelb | Curry yellow



**032.046 (0613)**  
Pink | Pink orchid



**032.044 (0433)**  
Orange | Orange



**032.043 (0584)**  
Samtrot | Red velvet



**032.019 (0731)**  
Indigo Blau | Indigo blue



**032.025 (0743)**  
Wasserblau | Lagoon blue



**032.022 (0791)**  
Dunkelblau | Deep blue



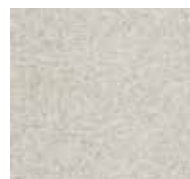
**032.023 (0813)**  
Türkis | Caribbean blue



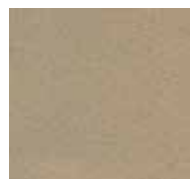
**032.010 (0913)**  
Grün | Organic green



**032.031 (0713)**  
Platingrau | Platin



**032.050 (0220)**  
Cappuccino | Cappuccino



**032.053 (0224)**  
Sand | Sand



**032.052 (0353)**  
Fango | Fango



**032.062 (0343)**  
Pfefferbraun | Brown Pepper



**032.069 (0260)**  
Terrabraun | Terra



**032.036 (0170)**  
Anthrazitgrau | Asphaltgrey



**032.033 (0180)**  
Schwarz | Midnightblack

PREISGRUPPE | PRICE GROUP SC

# BLAZER

Zusammensetzung: Reine Schurwolle 100 %  
Gewicht: ca. g/m 460  
Breite: 140 cm  
Lichtechtheit: Note 5 (DIN EN ISO 105-B02)  
Scheuerfestigkeit: nass (DIN EN ISO 105-X12) 4  
trocken (DIN EN ISO 105-X12) 4  
Brandverhalten: DIN EN 1021: Teil 1/2,  
BS 7176 Low Hazard,  
NF-D 60-013

Very strong synthetic leather, durable, resistant to disinfectants

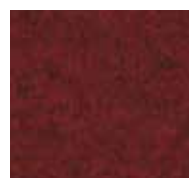
Composition: Pure New Wool 100 %  
Weight: approx. g/m 460  
Width: 140 cm  
Light fastness: value 5 (DIN EN ISO 105-B02)  
wet (DIN EN ISO 105-X12) 4  
dry (DIN EN ISO 105-X12) 4  
Abrasion resistance:  
Flammability: DIN EN 1021: Part 1/2,  
BS 7176 Low Hazard,  
NF-D 60-013



**171.004 (CUZ58)**  
Currygelb | Curry yellow



**171.044 (CUZ39)**  
Orange | Orange



**171.045 (CUZ90)**  
Kupferrot | Pure Copper



**171.023 (CUZ1R)**  
Türkis | Caribbean blue



**171.025 (CUZ1W)**  
Wasserblau | Lagoon blue



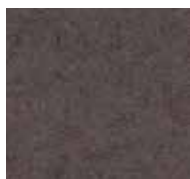
**171.013 (CUZ1F)**  
Olivgrün | Olive green



**171.053 (CUZ2Q)**  
Sand | Sand



**171.050 (CUZ86)**  
Cappuccino | Cappuccino



**171.051 (CUZ31)**  
Hellbraun | Light brown



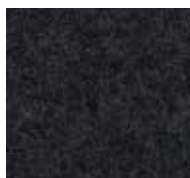
**171.031 (CUZ28)**  
Platingrau | Platin



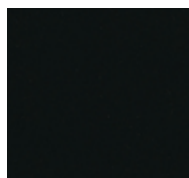
**171.030 (CUZ1E)**  
Grau | Metal grey



**171.036 (CUZ30)**  
Anthrazitgrau | Asphalt grey



**171.110 (CUZ35)**  
Dunkelgrün | Dark green



**171.033 (CUZ08)**  
Schwarz | Midnight black

PREISGRUPPE | PRICE GROUP SC

# AVALON

Zusammensetzung: 100 % Reine Schurwolle  
Gewicht: ca. 580 g/m  
Breite: 150 cm  
Lichtechtheit: Note 6 (DIN EN ISO 105-B02)  
Scheuerfestigkeit: 35.000 Touren (Martindale;  
DIN EN ISO 12947)  
Brandverhalten: DIN EN 1021: Teil 1/2

Composition: 100 % Pure New Wool  
Weight: approx. 580 g/m  
Width: 150 cm  
Light fastness: value 6 (DIN EN ISO 105-B02)  
Abrasion resistance: 35.000 rubs (Martindale;  
DIN EN ISO 12947)  
Flammability: DIN EN 1021: Part 1/2



**166.040 (367M/M015858)**  
Chillrot | Chili red



**166.121 (104)**  
Stahlblau | Steel blue



**166.025 (M/02863)**  
Wasserblau | Lagoon blue



**166.019 (M/021443)**  
Indigoblau | Indigo blue



**166.010 (M/04019)**  
Grün | Organic green



**166.030 (367/M6)**  
Grau | Metal grey



**166.036 (367/M81)**  
Anthrazitgrau | Asphalt grey



**166.053 (367/M8020)**  
Sand | Sand



**166.110 (449)**  
Dunkelgrün | Dark green

PREISGRUPPE | PRICE GROUP SC

# FENICE

Zusammensetzung: 75 % Wolle, 25 % Polyamid  
Gewicht: ca. 500 g/m  
Breite: 150 cm  
Lichtechtheit: Note 5–7 (UNI EN ISO 105-B02)  
Scheuerfestigkeit: 100.000 Touren (Martindale;  
UNI EN ISO 12947:2000)  
Brandverhalten: Italia - CLASSE I IM  
EN 1021: Teil 1/2  
US CA TB 117-2013  
BS 5852, Crib 5

Composition: 75 % Wool, 25 % Polyamide  
Weight: approx. 500 g/m  
Width: 150 cm  
Light fastness: value 5–7 (UNI EN ISO 105-BO2)  
Abrasion resistance: 100,000 rubs (Martindale;  
UNI EN ISO 12947:2000)

Flammability: Italia - CLASSE I IM  
EN 1021: Part 1/2  
US CA TB 117-2013  
BS 5852, Crib 5



**163.003 (51)**  
Honiggelb | Honey yellow



**163.004 (52)**  
Currygelb | Curry yellow



**163.044 (102)**  
Orange | Orange



**163.048 (202)**  
Shirazrot | Shiraz red



**163.024 (252)**  
Lila | Lila



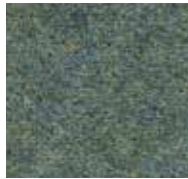
**163.025 (351)**  
Wasserblau | Lagoon blue



**163.021 (301)**  
Stahlblau | Steel blue



**163.016 (455)**  
Wassergrün | Ice green



**163.011 (453)**  
Hellgrün | Vivid green



**163.036 (302)**  
Anthrazitgrau | Asphalt grey

PREISGRUPPE | PRICE GROUP SC

# FENICE STUOIA

Zusammensetzung: 75 % Wolle, 25 % Polyamid  
Gewicht: ca. 500 g/m  
Breite: 150 cm  
Lichtechtheit: Note 5–7 (UNI EN ISO 105-B02)  
Scheuerfestigkeit: 100.000 Touren (Martindale;  
UNI EN ISO 12947:2000)  
Brandverhalten: Italia - CLASSE I IM  
EN 1021: Teil 1/2  
US CA TB 117-2013  
BS 5852, Crib 5

Composition: 75 % Wool, 25 % Polyamide  
Weight: approx. 500 g/m  
Width: 150 cm  
Light fastness: value 5–7 (UNI EN ISO 105-BO2)  
Abrasion resistance: 100,000 rubs (Martindale;  
UNI EN ISO 12947:2000)

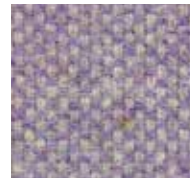
Flammability: Italia - CLASSE I IM  
EN 1021: Part 1/2  
US CA TB 117-2013  
BS 5852, Crib 5



**164.044 (2053)**  
Orange | Orange



**164.048 (2204)**  
Shirazrot | Shiraz red



**164.024 (2253)**  
Lila | Lila



**164.025 (2353)**  
Wasserblau | Lagoon blue



**164.121 (2304)**  
Stahlblau | Steel blue



**164.011 (2457)**  
Hellgrün | Vivid green

# STEP

Zusammensetzung: 100 % Trevira CS® (Polyester)  
 Gewicht: ca. 470 g/m  
 Breite: 140 cm  
 Lichtechtheit: Note 5 – 7 (DIN EN ISO 105-B02)  
 Pilling: Note 4 – 5 (DIN EN ISO 12945/2)  
 Reibechtheit: nass: 4 – 5 / trocken: 4 – 5 (DIN EN ISO 105-X12)  
 Scheuerfestigkeit: 100.000 Touren (Martindale; DIN EN ISO 12947-2)  
 Brandverhalten: IMO MSC 307(88) Annex 1 part 8, MED Certificate IMO, DIN 4102 Bl, NF-P 92-503/504/505 class MI, BS EN 1021: Teil 1/2, BS EN 1021-1, BS 5852 Part 1 0,1, BS 5852 Crib 5, ÖNORM B 3825-BI-3800-QI UK, BS 7176 Medium hazard, AM 18 - NFD 60-013, US CA TB 117-2013, Class Uno UNI 9175 Class I1 EMME, DIN EN 13501-1 B-s1,d0

Composition: 100 % Trevira CS® (polyester)  
 Weight: approx. 470 g/m  
 Width: 140 cm  
 Light fastness: value 5 – 7 (DIN EN ISO 105-B02)  
 Pilling: value 4 – 5 (DIN EN ISO 12945/2)  
 Fastness to rubbing: wet: 4 – 5 / dry: 4 – 5 (DIN EN ISO 105-X12)  
 Abrasion resistance: 100,000 rubs (Martindale; DIN EN ISO 12947-2)  
 Flammability: IMO MSC 307(88) Annex 1 part 8, MED Certificate IMO, DIN 4102 Bl, NF-P 92-503/504/505 class MI, BS EN 1021: Part 1/2, BS EN 1021-1, BS 5852 Part 1 0,1, BS 5852 Crib 5, ÖNORM B 3825-BI-3800-QI UK, BS 7176 Medium hazard, AM 18 - NFD 60-013, US CA TB 117-2013, Class Uno UNI 9175 Class I1 EMME, DIN EN 13501-1 B-s1,d0



**046.004** (62057)  
Currygelb | Curry yellow



**046.041** (64180)  
Feuerrot | Zucco red



**046.059** (63012)  
Rostbraun | Rust



**046.120** (66018)  
Hellblau | Light blue



**046.121** (66152)  
Stahlblau | Steel blue



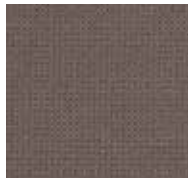
**046.022** (65011)  
Dunkelblau | Deep blue



**046.011** (68119)  
Hellgrün | Vivid green



**046.010** (68162)  
Grün | Organic green



**046.052** (60090)  
Fango | Fango



**046.030** (60011)  
Grau | Metal grey



**046.036** (60021)  
Anthrazitgrau | Asphalt grey



**046.033** (60999)  
Schwarz | Midnight black

## STEP MELANGE



**047.004** (62057)  
Currygelb | Curry yellow



**047.043** (64179)  
Samtrot | Red velvet



**047.025** (66018)  
Wasserblau | Lagoon blue



**047.121** (66152)  
Stahlblau | Steel blue



**047.022** (66149)  
Dunkelblau | Deep blue



**047.011** (62073)  
Hellgrün | Vivid green



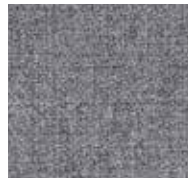
**047.013** (68163)  
Olivgrün | Olive green



**047.010** (68162)  
Grün | Organic green



**047.015** (68158)  
Waldgrün | Green



**047.030** (60004)  
Grau | Metal grey



**047.037** (61149)  
Vulkangrau | Vulcan grey



**047.036** (60090)  
Anthrazitgrau | Asphalt grey

PREISGRUPPE | PRICE GROUP SB

# FAME

**Zusammensetzung:** 95 % New Zealand-Wolle,  
5 % Polyamid  
**Gewicht:** ca. 630 g/m  
**Breite:** 140 cm  
**Lichtechtheit:** Note 5 – 7 (DIN EN ISO 105-B02)  
**Pilling:** Note 4 (DIN EN ISO 12945/2)  
**Reibechtheit:** nass: 4 – 5 / trocken: 4 – 5  
**Scheuerfestigkeit:** 200.000 Touren (Martindale;  
DIN EN ISO 12947-2)  
**Brandverhalten:** DIN EN 1021: Teil 1/2

**Composition:** 95 % New Zealand wool,  
5 % Polyamide  
**Weight:** approx. 630 g/m  
**Width:** 140 cm  
**Light fastness:** value 5 – 7 (DIN EN ISO 105-B02)  
**Pilling:** value 4 (DIN EN ISO 12945/2)  
**Fastness to rubbing:** wet: 4 – 5 / dry: 4 – 5  
**Abrasion resistance:** 200,000 rubs (Martindale;  
DIN EN ISO 12947-2)  
**Flammability:** DIN EN 1021: Part 1/2



**078.002** (62067)  
Limonengelb | Lime yellow



**078.044** (63016)  
Orange | Orange



**078.041** (64119)  
Feuerrot | Züco red



**078.040** (64089)  
Chillirof | Chilli red



**078.027** (66075)  
Königsblau | Royal blue



**078.020** (66032)  
Standardblau | Classic blue



**078.022** (66005)  
Dunkelblau | Deep blue



**078.010** (68035)  
Grün | Organic green



**078.036** (60017)  
Anthrazitgrau | Asphalt grey



**078.033** (60999)  
Schwarz | Midnight black

PREISGRUPPE | PRICE GROUP SB

# GO UNI/ COUTURE\*

**Zusammensetzung:** 100 % Trevira CS® (Polyester)  
ca. 435 g/m  
**Gewicht:** ca. 435 g/m  
**Breite:** 140 cm  
**Lichtechtheit:** Note 5 – 8 (DIN EN ISO 105-B02)  
**Pilling:** Note 5 (DIN EN ISO 12945/2)  
**Reibechtheit:** nass: 4 – 5 / trocken: 4 – 5  
(DIN EN ISO 105-X12)  
**Scheuerfestigkeit:** 100.000 Touren (Go Uni)  
80.000 Touren (Go Couture)  
(Martindale: DIN EN ISO 12947-2)  
**Brandverhalten:** BS 7176 Medium hazard;  
BS 5852 Crib 5;  
BS 5852 Part 1 0.1;  
BS EN 1021: Teil 1/2; DIN 4102 B1;  
NF-P 92-503/504/505 M1;  
ONORM B 3825-B1-3800-Q1 UK;  
Class Uno UNI 9175 Class II  
EMME; FAR/JAR 25.853 (a) (i) (ii);  
US CA TB 117-2013;  
DIN EN 13501-1 B-s1,d0

**Composition:** 100 % Trevira CS® (polyester)  
approx. 435 g/m  
**Weight:** approx. 435 g/m  
**Width:** 140 cm  
**Light fastness:** value 5 – 8 (DIN EN ISO 105-B02)  
**Pilling:** value 5 (DIN EN ISO 12945/2)  
**Fastness to rubbing:** wet: 4 – 5 / dry: 4 – 5  
(DIN EN ISO 105-X12)  
**Abrasion resistance:** 100.000 rubs (Go Uni)  
80.000 rubs (Go Couture)  
(Martindale: DIN EN ISO 12947-2)  
**Flammability:** BS 7176 Medium hazard;  
BS 5852 Crib 5;  
BS 5852 Part 1 0.1;  
BS EN 1021: Part 1/2; DIN 4102 B1;  
NF-P 92-503/504/505 M1;  
ONORM B 3825-B1-3800-Q1 UK;  
Class Uno UNI 9175 Class II  
EMME; FAR/JAR 25.853 (a) (i) (ii);  
US CA TB 117-2013;  
DIN EN 13501-1 B-s1,d0

168.xxx = Go Uni



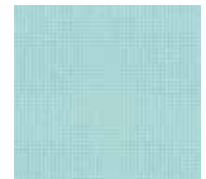
**168.140** (64174)  
Koralle | Coral



**168.120** (66135)  
Hellblau | Light blue



**168.028** (66137)  
Marineblau | Navy blue



**168.016** (67168)  
Wassergrün | Ice green

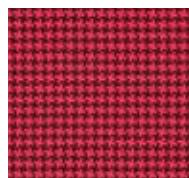


**168.033** (60999)  
Schwarz | Midnight black

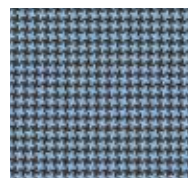
167.xxx = Go Couture\*

\*Nur für modul space Sitzkissen und Loungemöbel geeignet.

\*Only suitable for modul space seat cushions and lounge furniture.



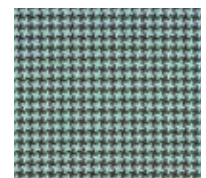
**167.140** (64174)  
Koralle | Coral



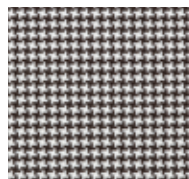
**167.120** (66135)  
Hellblau | Light blue



**167.028** (66137)  
Marineblau | Navy blue



**167.016** (68168)  
Wassergrün | Ice green



**167.079** (60078)  
Schwarz und Weiß | Black  
and White



PREISGRUPPE | PRICE GROUP SB

# RUNNER

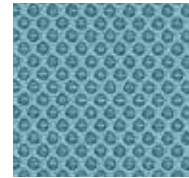
Zusammensetzung: 100 % Polyester  
Gewicht: ca. 510 g/m  
Breite: 160 cm  
Lichtechtheit: Note 5 (DIN EN ISO 105-B02)  
Pilling: Note 5 (DIN EN ISO 12945/2)  
Reibechtheit: nass: 4 / trocken: 5  
Scheuerfestigkeit: 70.000 Touren (Martindale; DIN EN ISO 12947-2)  
Brandverhalten: DIN EN 1021: Teil 1/2  
Composition: 100 % Polyester  
Weight: approx. 510 g/m  
Width: 160 cm  
Light fastness: value 5 (DIN EN ISO 105-B02)  
Pilling: value 5 (DIN EN ISO 12945/2)  
Fastness to rubbing: wet: 4 / dry: 5  
Abrasion resistance: 70,000 rubs (Martindale; DIN EN ISO 12947-2)  
Flammability: DIN EN 1021: Part 1/2



**056.044** (63034)  
Orange | Orange



**056.040** (64089)  
Chilirot | Chilli red



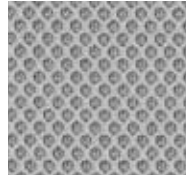
**056.120** (66063)  
Hellblau | Light blue



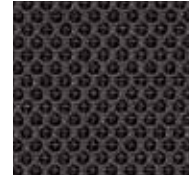
**056.022** (66064)  
Dunkelblau | Deep blue



**056.011** (68056)  
Hellgrün | Vivid green



**056.031** (60011)  
Platingrau | Platin



**056.035** (60025)  
Graphitgrau | Graphite



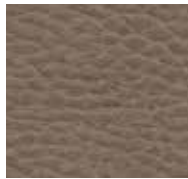
**056.033** (60999)  
Schwarz | Midnight black

PREISGRUPPE | PRICE GROUP SB

# PAROTEGA NF

Desinfektionsmittelbeständig\*, schwer entflammbar, angenehme Haptik  
Zusammensetzung: 83 % PVC-Compound, 17 % BW  
Gewicht: ca. 700 g/m<sup>2</sup>  
Breite: 137 cm  
Lichtechtheit: Note 5 (DIN EN ISO 105-B02)  
Reibechtheit: nass: 4 / trocken: 4 – 5 (DIN EN ISO 105-X12)  
Scheuerfestigkeit: 50.000 Touren (Martindale; DIN EN ISO 12947-2)  
Brandverhalten: DIN EN 1021: Teil 1/2, DIN 4102 BI, NF-P 503 Klasse MI, BS 5852 IS 0+1, Crib 5, UN2 9175/87 (I, IM)  
\*empfohlene Desinfektionsmittel auf Anfrage

Resistant to disinfectants\*, flame retardant, soft-touch surface  
Composition: 83 % PVC-Compound, 17 % BW  
Weight: approx. 700 g/m<sup>2</sup>  
Width: 137 cm  
Light fastness: value 5 (DIN EN ISO 105-B02)  
Fastness to rubbing: wet: 4 / dry: 4 – 5 (DIN EN ISO 105-X12)  
Abrasion resistance: 50,000 rubs (Martindale; DIN EN ISO 12947-2)  
Flammability: DIN EN 1021: Part 1/2, DIN 4102 BI, NF-P 503 class MI, BS 5852 IS 0+1, Crib 5, UN2 9175/87 (I, IM)  
\*recommended disinfectants on request



**039.052** (F6461658)  
Fango | Fango



**039.042** (F6461665)  
Rubinrot | Ruby red

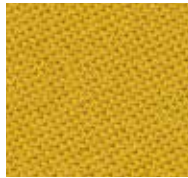


**039.033** (F6461659)  
Schwarz | Midnight black

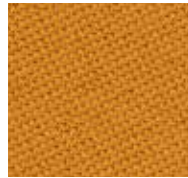
# TONAL

Zusammensetzung: 99% Recyceltes Polyester,  
1% Polyester  
Gewicht: ca. 315 g/m  
Breite: 140 cm  
Lichtechntheit: Note 6-8 (DIN EN ISO 105-B02)  
Pilling: Note 4-5 (DIN EN ISO 12945/2)  
Reibechtheit: nass: 4-5 / trocken: 4-5  
(DIN EN ISO 105-X12)  
Scheuerfestigkeit: 100.000 Touren (Martindale;  
DIN EN ISO 12947-2)  
Brandverhalten: US CA TB 117-2013, ASTM E 84,  
BS EN 1021: Teil 1/2,  
BS EN 1021-1, BS 5852 Part 1, 0,1,  
BS 476 Part 7, class 1

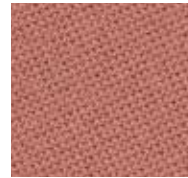
Composition: 99% Post-consumer recycled polyester, 1%  
Polyester  
Weight: approx. 315 g/m  
Width: 140 cm  
Light fastness: value 6-8 (DIN EN ISO 105-BO2)  
Pilling: value 4-5 (DIN EN ISO 12945/2)  
Fastness to rubbing: wet: 4-5 / dry: 4-5  
(DIN EN ISO 105-X12)  
Abrasion resistance: 100,000 rubs (Martindale;  
DIN EN ISO 12947-2)  
Flammability: US CA TB 117-2013, ASTM E 84,  
BS EN 1021: Part 1/2,  
BS EN 1021-1, BS 5852 Part 1, 0,1,  
BS 476 Part 7, class 1



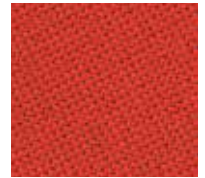
**165.004** (62057)  
Currygelb | Curry yellow



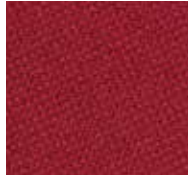
**165.044** (63098)  
Orange | Orange



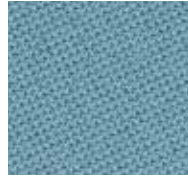
**165.046** (64210)  
Pink | Pink orchid



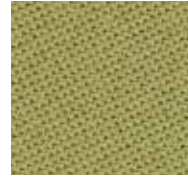
**165.047** (64207)  
Mandarine | Mandarine



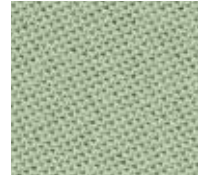
**165.042** (64209)  
Rubinrot | Ruby red



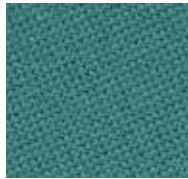
**165.025** (66185)  
Wasserblau | Lagoon blue



**165.011** (62092)  
Hellgrün | Vivid green



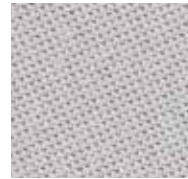
**165.016** (67089)  
Wassergrün | Ice green



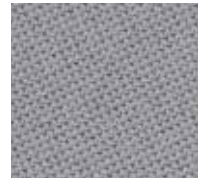
**165.018** (97090)  
Opalgrün | Opal green



**165.014** (66186)  
Petrolgrün | Jade green



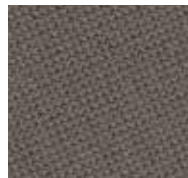
**165.031** (60122)  
Platingrau | Platin



**165.030** (60123)  
Grau | Metal grey



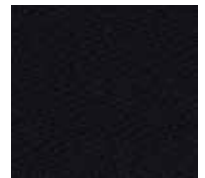
**165.050** (61180)  
Cappuccino | Cappuccino



**165.052** (61182)  
Fango | Fango



**165.066** (64211)  
Mittelbraun | Auburn



**165.033** (60999)  
Schwarz | Midnight black





PREISGRUPPE | PRICE GROUP SA

# KING

Zusammensetzung: 100 % Trevira CS® (Polyester)  
 Gewicht: ca. 420 g/m  
 Breite: 140 cm  
 Lichtechtheit: Note 6 (DIN EN ISO 105-B02)  
 Pilling: Note 4 – 5 (DIN EN ISO 12945/2)  
 Reibeichtheit: nass: 4 – 5 / trocken: 4 – 5  
 Scheuerfestigkeit: 100.000 Touren (Martindale; DIN EN ISO 12947)  
 Brandverhalten: DIN EN 1021: Teil 1/2, DIN 4102 B1, NF-P 92-503 Klasse MI, BS 5852 IS 0+1, Crib 5, UN2 9175/87 (I. IM)

Composition: 100 % Trevira CS® (polyester)  
 Weight: approx. 420 g/m  
 Width: 140 cm  
 Light fastness: value 6 (DIN EN ISO 105-B02)  
 Pilling: value 4 – 5 (DIN EN ISO 12945/2)  
 Fastness to rubbing: wet: 4 – 5 / dry: 4 – 5  
 Abrasion resistance: 100,000 rubs (Martindale; DIN EN ISO 12947)

Flammability: DIN EN 1021: Part 1/2, DIN 4102 B1, NF-P 92-503 class MI, BS 5852 IS 0+1, Crib 5, UN2 9175/87 (I. IM)



**081.044** (4030)  
Orange | Orange



**081.041** (4027)  
Feuerrot | Zucco red



**081.040** (9244)  
Chillrot | Chillired



**081.042** (4017)  
Rubinrot | Ruby red



**081.120** (9606)  
Hellblau | Light blue



**081.021** (6071)  
Azurblau | Azure blue



**081.020** (9268)  
Standardblau | Classic blue



**081.025** (6018)  
Wasserblau | Lagoon blue



**081.011** (7011)  
Hellgrün | Vivid green



**081.010** (7013)  
Dunkelgrün | Dark green



**081.110** (7008)  
Nachtblau | Midnight blue



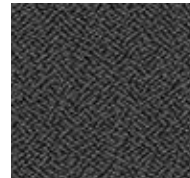
**081.022** (6098)  
Dunkelblau | Deep blue



**081.031** (8027)  
Platingrau | Platin



**081.032** (8010)  
Steingrau | Stone grey



**081.030** (9289)  
Grau | Metal grey



**081.033** (8033)  
Schwarz | Midnight black

PREISGRUPPE | PRICE GROUP SA

# VALENCIA

Sehr robustes Kunstleder, langlebig, desinfektionsmittelbeständig

Zusammensetzung: Beschichtung: 100 % Vinyl/  
 Träger: 100 % Polyester Hi-Loft2TM  
 ca. 650 g/m2  
 Gewicht: 137 cm  
 Breite: Note 5 (DIN EN ISO 105-B02)  
 Lichtechtheit: 300.000 Touren (Martindale; DIN EN ISO 12947-2)  
 Scheuerfestigkeit: DIN EN 1021: Teil 1/2, NF-P 92-503 Klasse M2, DIN 4102 B2  
 Brandverhalten:

Very strong synthetic leather, durable, resistant to disinfectants

Composition: Topcoat: 100 % Vinyl/  
 Backing: 100 % Polyester Hi-Loft2TM  
 approx. 650 g/m2  
 Weight: 137 cm  
 Width: value 5 (DIN EN ISO 105-B02)  
 Abrasion resistance: 300,000 rubs (Martindale; DIN EN ISO 12947-2)  
 Flammability: DIN EN 1021: Part 1/2, NF-P 92-503 class DIN 4102 B2



**006.001** (107-2020)  
Leuchtgelb | Luminous yellow



**006.040** (107-2075 / K310510)  
Chillrot | Chili red



**006.025** (107-3001)  
Wasserblau | Lagoon blue



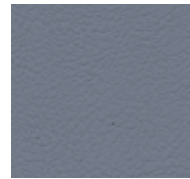
**006.020** (107-3067 / K310610)  
Standardblau | Classic blue



**006.022** (107-3068 / K310660)  
Dunkelblau | Deep blue



**006.010** (107-5069 / K310780)  
Grün | Organic green



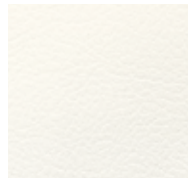
**006.030** (107-4042 / K310630)  
Grau | Metal grey



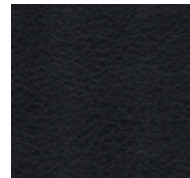
**006.031** (107-4043)  
Platingrau | Platin



**006.070** (107-8032 / K310100)  
Polarweiß | Arctic white



**006.073** (107-8020)  
Reinweiß | Pure White



**006.033** (107-9035 / K310399)  
Schwarz | Midnight black

PREISGRUPPE | PRICE GROUP SP

# POLO

Zusammensetzung: 100 % Polyester  
 Gewicht: ca. 350 g/m  
 Breite: 140 cm  
 Lichtechtheit: Note 6 (DIN EN ISO 105-B02)  
 Reibechtheit: nass: 4-5 / trocken: 4-5  
 Scheuerfestigkeit: 150.000 Touren (Martindale);  
 DIN EN ISO 12947  
 Brandverhalten: DIN EN 1021: Teil 1/2

Composition: 100 % Polyester  
 Weight: approx. 350 g/m  
 Width: 140 cm  
 Light fastness: value 6 (DIN EN ISO 105-B02)  
 Fastness to rubbing: wet: 4-5 / dry: 4-5  
 Abrasion resistance: 150,000 rubs (Martindale);  
 DIN EN ISO 12947  
 Flammability: DIN EN 1021: Part 1/2



**077.044 (3012)**  
Orange | Orange



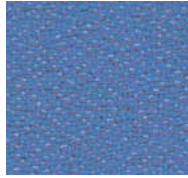
**077.040 (4011)**  
Chilirot | Chilli red



**077.048 (4017)**  
Shirazrot | Shiraz red



**077.120 (6006)**  
Hellblau | Light blue



**077.025 (6003)**  
Wasserblau | Lagoon blue



**077.021 (6075)**  
Azurblau | Azure blue



**077.020 (6016)**  
Standardblau | Classic blue



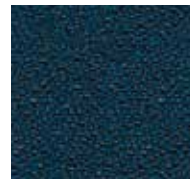
**077.011 (7032)**  
Hellgrün | Vivid green



**077.010 (7048)**  
Grün | Organic green



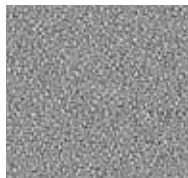
**077.110 (7008)**  
Dunkelgrün | Dark green



**077.029 (6098)**  
Nachtblau | Midnight blue



**077.050 (1008)**  
Cappuccino | Cappuccino



**077.031 (8078)**  
Platingrau | Platin



**077.030 (8010)**  
Grau | Metal grey



**077.032 (8013)**  
Steingrau | Stone grey



**077.033 (8033)**  
Schwarz | Midnight black

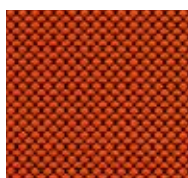
PREISGRUPPE | PRICE GROUP SP

# FABIO\*

\*Nur für modul space Sitzkissen und Loungemöbel geeignet.  
 \*Only suitable for modul space seat cushions and lounge furniture.

Zusammensetzung: 100 % Polyester FR  
 Gewicht: ca. 560 g/m  
 Breite: 140 cm  
 Lichtechtheit: Note 5 - 8 (DIN EN ISO 105-B02)  
 Pilling: Note 5 (DIN EN ISO 12945/2)  
 Reibechtheit: nass: 4-5 / trocken: 4-5  
 (DIN EN ISO 105-X12)  
 Scheuerfestigkeit: 80.000 Touren (Martindale);  
 DIN EN ISO 12947-2  
 Brandverhalten: DIN EN 1021: Teil 1/2,  
 DIN 4102 B1,  
 NF-P 92-503 Klasse M1,  
 BS 5852 IS 0+1, Crib 5,  
 UN2 9175/87 (I, IM)

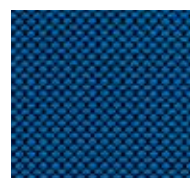
Composition: 100 % Polyester FR  
 Weight: approx. 560 g/m  
 Width: 140 cm  
 Light fastness: value 5 - 8 (DIN EN ISO 105-B02)  
 Pilling: value 5 (DIN EN ISO 12945/2)  
 Fastness to rubbing: wet: 4-5 / dry: 4-5  
 (DIN EN ISO 105-X12)  
 Abrasion resistance: 80,000 rubs (Martindale);  
 DIN EN ISO 12947-2  
 Flammability: DIN EN 1021: Part 1/2,  
 DIN 4102 B1,  
 NF-P 92-503 class M1,  
 BS 5852 IS 0+1,  
 Crib 5, UN2 9175/87 (I, IM)



**012.044 (3594)**  
Orange | Orange



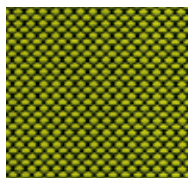
**012.040 (4528)**  
Chilirot | Chilli red



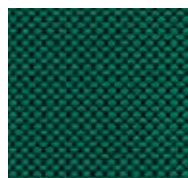
**012.019 (6575)**  
Indigoblau | Indigo blue



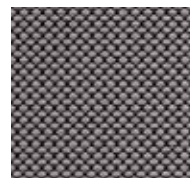
**012.022 (6571)**  
Dunkelblau | Deep blue



**012.011 (7541)**  
Hellgrün | Vivid green



**012.110 (7508)**  
Dunkelgrün | Dark green



**012.031 (8532)**  
Platingrau | Platin



**012.033 (8033)**  
Schwarz | Midnight black

PREISGRUPPE | PRICE GROUP LE

# LEATHER E\*

\*Nur für modul space Sitzkissen und Loungemöbel geeignet.  
\*Only suitable for modul space seat cushions and lounge furniture.

Nappedleder pigmentiert (Semi-Anilinleder)  
Anilingefärbtes leicht mit Pigmentfarbe abgedecktes Rindsobleder, sehr strapazierfähig, vollnarbig.

Lichtechtheit: Note 3 (DIN EN ISO 105-B02)  
Reibechtheit: nass: 4-5 / trocken: 4-5 (DIN EN ISO 11640)  
Brandverhalten: DIN EN 1021: Teil 1/2

Pigmented Nappa leather (semi-aniline leather)  
Aniline dyed cowhide leather with light pigment dyeing, very hard wearing, full-grain.

Light fastness: value 3 (DIN EN ISO 105-B02)  
Fastness to rubbing: wet: 4-5 / dry: 4-5 (DIN EN ISO 11640)  
Flammability: DIN EN 1021: Part 1/2



001.052 (Atlantic torf)  
Fango | Fango



001.069 (Atlantic tabak)  
Terrabraun | Terra brown



001.035 (Atlantic graphit)  
Graphitgrau | Graphite



001.072 (Atlantic kiesel)  
Kaschmirweiß | Cashmere



001.070 (Atlantic weiß)  
Polarweiß | Arctic white



001.033 (Atlantic schwarz)  
Schwarz | Midnight black

PREISGRUPPE | PRICE GROUP LF

# LEATHER F\*

\*Nur für modul space Sitzkissen und Loungemöbel geeignet.  
\*Only suitable for modul space seat cushions and lounge furniture.

Premium Echt-Leder  
Feinstes, naturbelassenes Nappedleder.  
Anilingefärbtes Rindsobleder der Spitzenklasse. Mit natürlichen Ölen behandelt, tuchweicher Griff, atmungsaktiv, hautsympathisch, feuchtigkeitsregulierend. Wasserlösliche Farben ohne chemische Lösungsmittel.

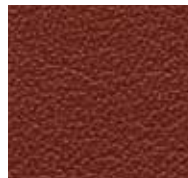
Lichtechtheit: Note 4 (DIN EN ISO 105-B02)  
Reibechtheit: nass: 4 / trocken: 3-4 (DIN EN ISO 11640)  
Brandverhalten: DIN EN 1021: Teil 1/2

Premium leather  
The finest natural Nappa leather top quality.  
Aniline dyed cowhide leather. Treated with natural oils, fabric-soft touch, breathable, dermatologically safe, moisture control. Water-soluble dyes without solvents.

Light fastness: value 4 (DIN EN ISO 105-B02)  
Fastness to rubbing: wet: 4 / dry: 3-4 (DIN EN ISO 11640)  
Flammability: DIN EN 1021: Part 1/2



029.041 (34910-F03)  
Feuerrot | Züco red



029.048 (34910-S08)  
Shirazrot | Shiraz red



029.053 (34910-GEO)  
Sand | Sand



029.050 (34910-G03)  
Cappuccino | Cappuccino



029.052 (34910-B16)  
Fango | Fango



029.064 (34910-B13)  
Tabakbraun | Brown



029.062 (34910-GEP)  
Pfefferbraun | Brown pepper



029.061 (34910-G01)  
Dunkelbraun | Walnut



029.027 (34910-S18)  
Königsblau | Royal blue



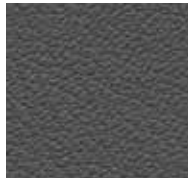
029.031 (34910-S05)  
Platingrau | Grey



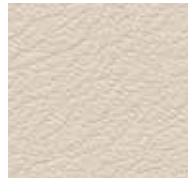
029.032 (34910-E08)  
Steingrau | Stone grey



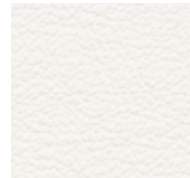
029.035 (34910-A02)  
Graphitgrau | Graphite



029.036 (34910-EG2)  
Anthrazitgrau | Asphalt grey



029.072 (34910-G16)  
Kaschmirweiß | Cashmere



029.073 (34910-P07)  
Reinweiß | Pure white



029.033 (10875D / 34910-T01)  
Schwarz | Midnight black



bosse.de  
dauphin-group.com

Hersteller | Manufacturer:  
Bosse Design Gesellschaft für  
Innovative Office Interiors mbH & Co. KG  
Stahler Ufer 7  
37671 Höxter/Stahle, Germany  
+49 5531 1297-0  
info@bosse.de

Vertrieb | Distribution:  
Dauphin HumanDesign® Group GmbH & Co. KG  
Espanstraße 36  
91238 Offenhausen, Germany  
+49 9158 17-700  
info@dauphin-group.com

**Bosse**