

HAWORTH

Europäische Farb- kollektion

Stoffe & Materialien

Oktober, 2020





Reinigungsanleitung



Übersicht



Kollektion King L Kat

Preisgruppe 1

Kollektionsnummer: 63

Material: 100% Polyester Trevira CS



63/6052



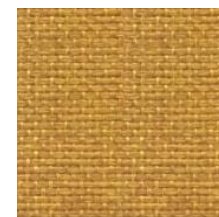
63/6091



63/7019



63/7022



63/3005



63/3082



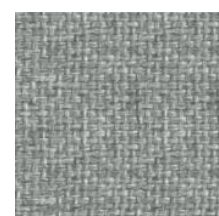
63/4021



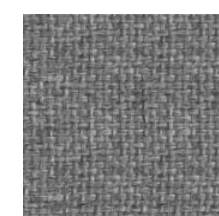
63/1008



63/3030



63/8032



63/8006



63/1025



Reinigungsanleitung



Übersicht

Kollektion Maya

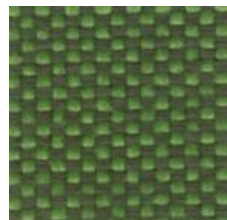
Preisgruppe 1

Kollektionsnummer: 66

Material: 100% Polyester Trevira CS



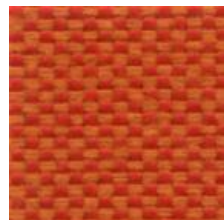
66/9604



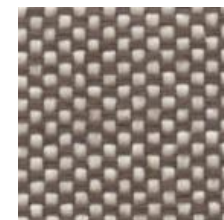
66/9704



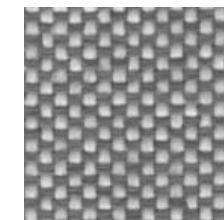
66/9309



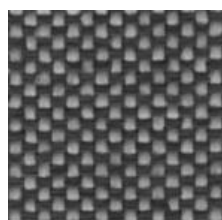
66/9404



66/9212



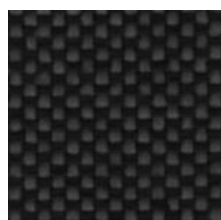
66/9107



66/9803*



66/9228*



66/9805*

* Nicht verfügbar für Openest Plume Screens



Reinigungsanleitung



Übersicht



Kollektion Blazer

Preisgruppe 2
Kollektionsnummer: 61
Material: 100% Schurwolle

Auslauf im Dezember 2020



61/001R



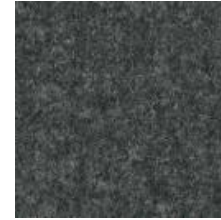
61/001W



61/0039



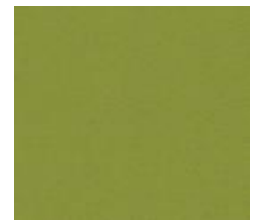
61/0028



61/0030



61/0002



61/0053



61/002Q Neu!



61/002Z Neu!



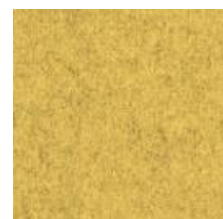
61/0090 Neu!



61/003A Neu!



61/0082 Neu!



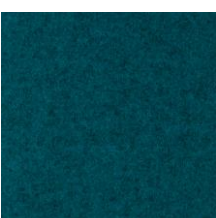
61/0058



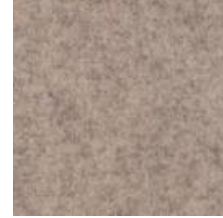
61/001K



61/002T Neu!



61/003B Neu!



61/0086



Reinigungsanleitung



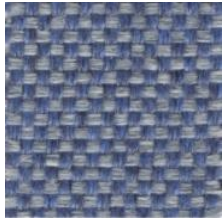
Übersicht

Kollektion Class

Preisgruppe 2

Kollektionsnummer: 68

Material: 100% Polyester Trevira CS



68/9605



68/9705



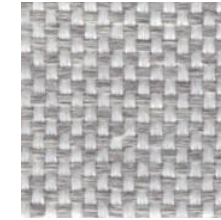
68/9702



68/9404



68/9252



68/9109



68/9805



Reinigungsanleitung

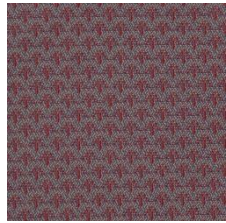


Übersicht



Kollektion Small Arrow

Preisgruppe 2
Kollektionsnummer:
Material: 100% Polyester



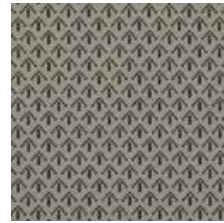
4LOCR
Crossbow



4LOTA
Target



4LOFL
Fletcher



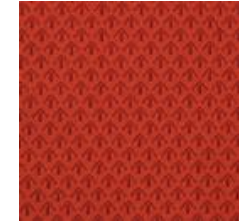
4LOQU
Quiver



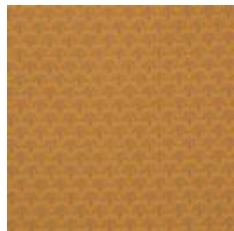
4LOST
Shaft



4LOAR
Archer



4LOBA
Barb



4LONK
Nock



Reinigungsanleitung

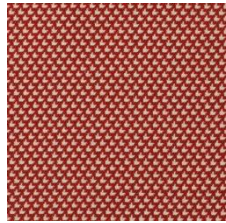


Übersicht

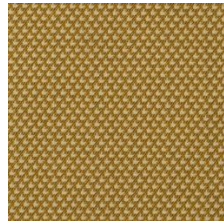


Kollektion Diagonale

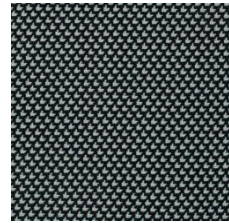
Preisgruppe 2
Kollektionsnummer:
Material: 100% Polyester



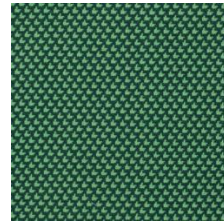
4NOBA
Bias



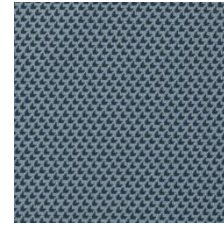
4NODA
Diamond



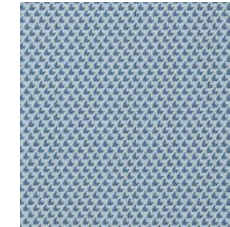
4NOSH
Slash



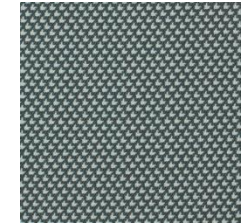
4NOST
Slant



4NOCH
Chevron



4NOFE
Featherstitch



4NOMA
Matrix



4NOHT
Half Timber



Reinigungsanleitung



Übersicht

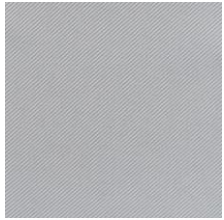


Kollektion Relate – Neu!

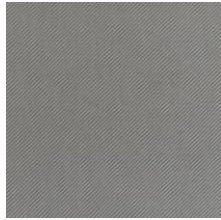
Preisgruppe 2 – Neu!

Kollektionsnummer:

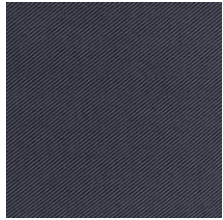
Material: 100% Trevira CS



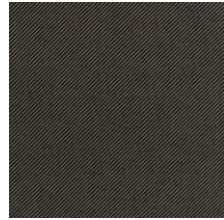
1B-121



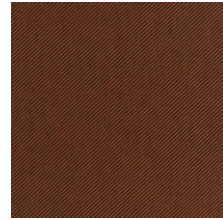
1B-151



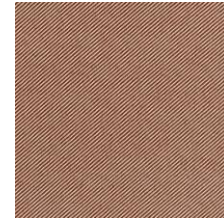
1B-171



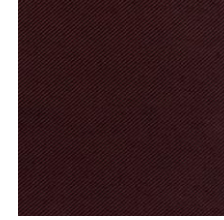
1B-181



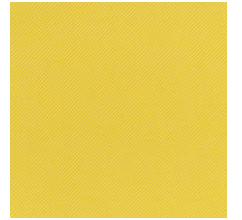
1B-271



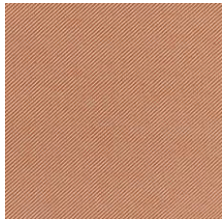
1B-341



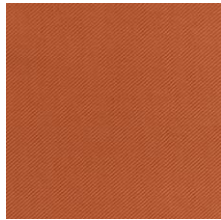
1B-381



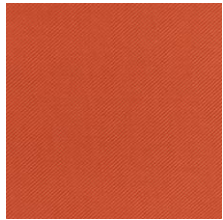
1B-431



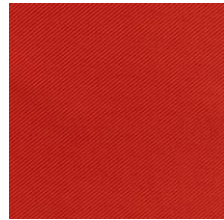
1B-441



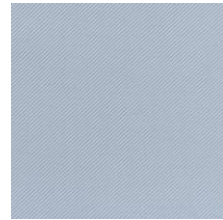
1B-461



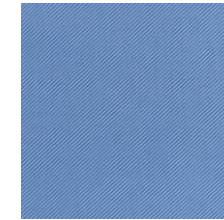
1B-561



1B-641



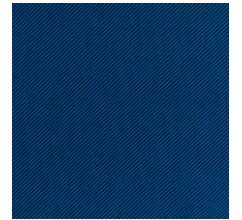
1B-711



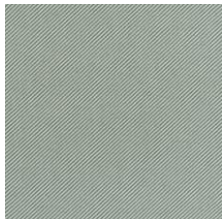
1B-741



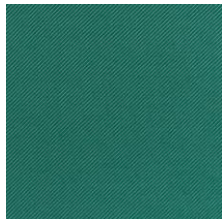
1B-791



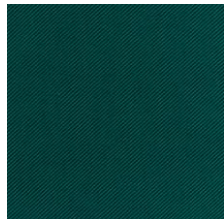
1B-881



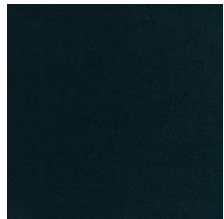
1B-921



1B-961



1B-981



1B-991



Reinigungsanleitung



Übersicht

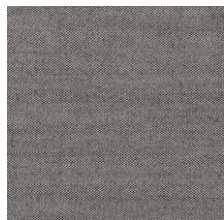


Kollektion Atlas

Preisgruppe 3

Kollektionsnummer: -

Material: 90% Schurwolle, 10% Nylon



LW - A131



LW - B151



LW - D361



LW - E461



LW - T931



LW - G501



LW - H531



LW - J561



LW - K571



LW - V951



LW - F471



LW - N651



LW - L621



LW - M631



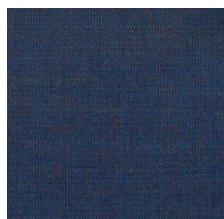
LW - C181



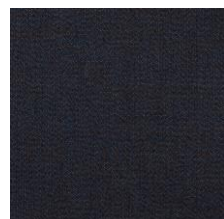
LW - P671



LW - Q771



LW - R861



LW - S881



Reinigungsanleitung



Übersicht

Kollektion Big Arrow

Preisgruppe 4

Kollektionsnummer: -

Material: 80% Polyester, 20% Trevira CS



4DOBL
Blue



4DOCN
Cool Neutral



4DODB
Dark Blue



4DOGD
Gold



4DOGR
Green



4DOMG
Medium Grey



4DORE
Red



Reinigungsanleitung



Übersicht



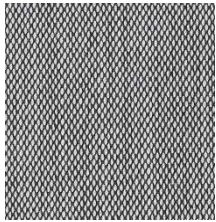
Kollektion SteelCut Trio 3

Preisgruppe 5

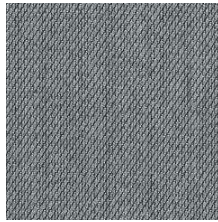
Kollektionsnummer: 58

Material: 90% Schurwolle, 10% Nylon

Auslauf im Dezember 2020



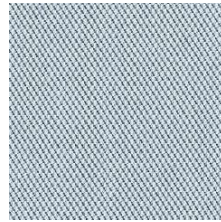
58/0124



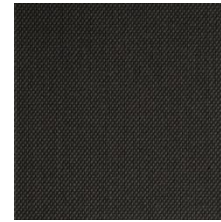
58/0153



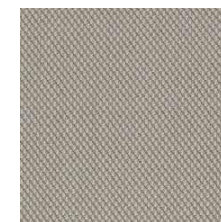
58/0533



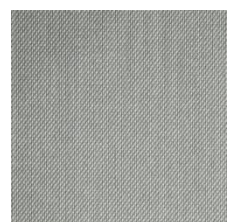
58/0713



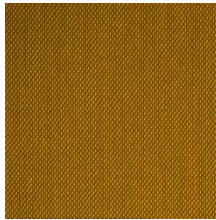
58/0383



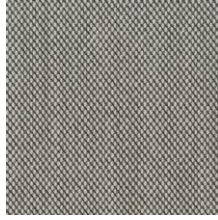
58/0205



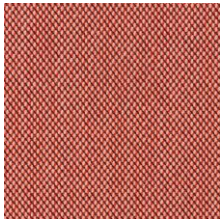
58/0113



58/0453



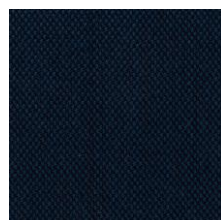
58/0133 Neu!



58/0636 Neu!



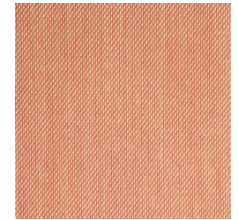
58/0883 Neu!



58/0796 Neu!



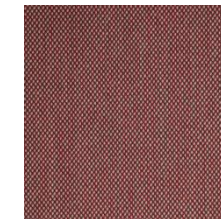
58/0253



58/0515



58/0966 Neu!



58/0645



58/0946



Reinigungsanleitung



Übersicht

Kollektion Hallingdal 65

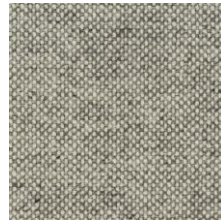
Preisgruppe 6

Kollektionsnummer: -

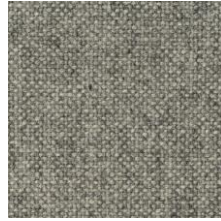
Material: 70% Schurwolle, 30% Viscose



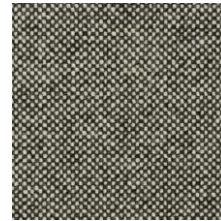
SZ - 110



SZ - 116



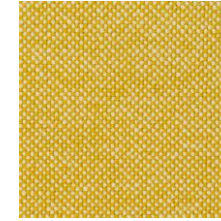
SZ - 130



SZ - 126



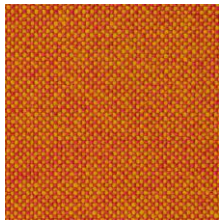
SZ - 368



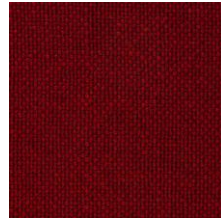
SZ - 407



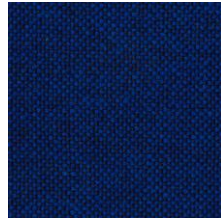
SZ - 200



SZ - 526



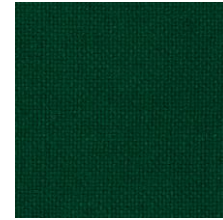
SZ - 687



SZ - 754



SZ - 764



SZ - 944



Reinigungsanleitung



Übersicht



Kollektion Divina Melange 3

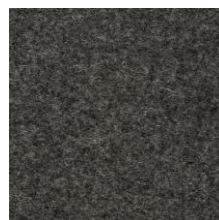
Preisgruppe 6

Kollektionsnummer: -

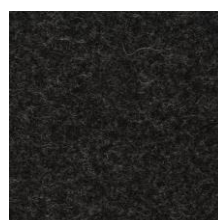
Material: 100% Schurwolle



SV - 120



SV - 170



SV - 180



SV - 227



SV - 427



SV - 557



SV - 967



SV - 687

**Lassen Sie sich
inspirieren,
werden Sie
kreativ!**