

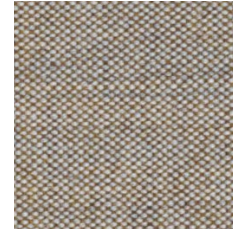
## remix 2 | RX

## kwadrat

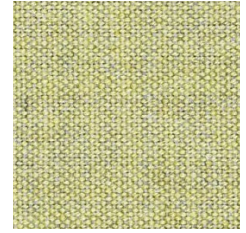
**Skład:** 90% wełna, 10% nylon  
**Waga:** 301 g/m<sup>2</sup>  
**Szerokość rolki:** 138 cm  
**Oporność na ścieranie**  
 100,000 cykli Martindale'a  
 (BS EN ISO 12947-2:1998)  
**Pilling**  
 4 (EN ISO 12945)  
**Oporność na światło**  
 5 (ISO 105-B02)  
**Certyfikaty trudnopalności**  
 -EN 1021-1/2  
 -BS 5852 part 1  
 -Önorm B1/Q1  
 -NF D 60 013  
 -UNI 9175 1IM  
 -NFPA 260  
 -IMO FTP Code 2010: Part B

**Zusammensetzung:** 90% Schur-  
 wolle, 10% Nylon  
**Gewicht:** 301 g/m<sup>2</sup>  
**Rollenbreite:** 138 cm  
**Scheuerfestigkeit**  
 100,000 Zyklen Martindale  
 (BS EN ISO 12947-2:1998)  
**Pilling**  
 4 (EN ISO 12945)  
**Lichtechtheit**  
 5 (ISO 105-B02)  
**Feuersicherung**  
 -EN 1021-1/2  
 -BS 5852 part 1  
 -Önorm B1/Q1  
 -NF D 60 013  
 -UNI 9175 1IM  
 -NFPA 260  
 -IMO FTP Code 2010: Part B

**Composition:** 90% wool,  
 10% nylon  
**Weight:** 301 g/m<sup>2</sup>  
**Roll width:** 138 cm  
**Abrasion Resistance**  
 100,000 Martindale cycles  
 (BS EN ISO 12947-2:1998)  
**Pilling**  
 4 (EN ISO 12945)  
**Light Fastness**  
 5 (ISO 105-B02)  
**Flammability**  
 -EN 1021-1/2  
 -BS 5852 part 1  
 -Önorm B1/Q1  
 -NF D 60 013  
 -UNI 9175 1IM  
 -NFPA 260  
 -IMO FTP Code 2010: Part B



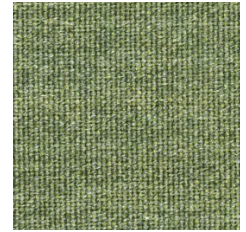
RX 242



RX 923



RX 233



RX 933



RX 612



RX 543



RX 252



RX 962



RX 912



RX 643



RX 632



RX 433



RX 412



RX 942



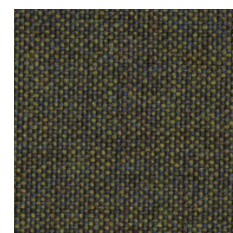
RX 653



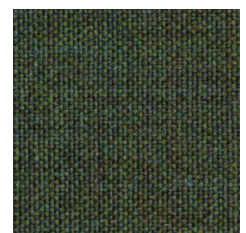
RX 443



RX 422



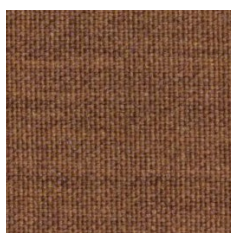
RX 842



RX 982



RX 662



RX 452



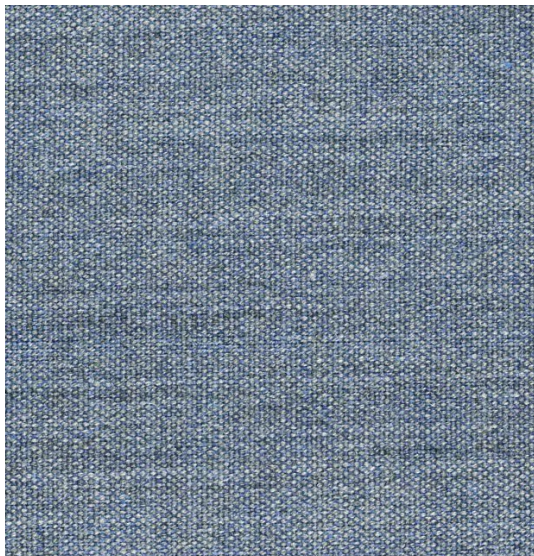
RX 373



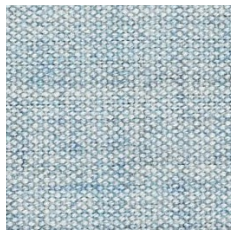
RX 954



RX 973



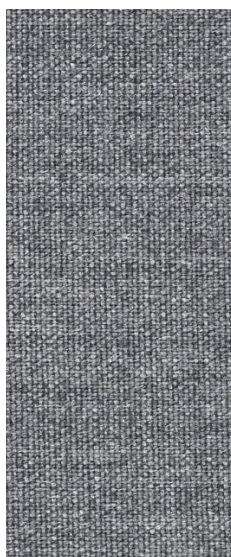
RX 733



RX 823



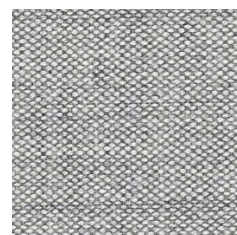
RX 113



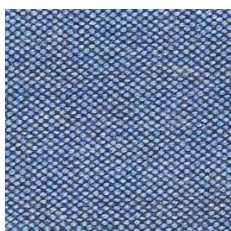
RX 143



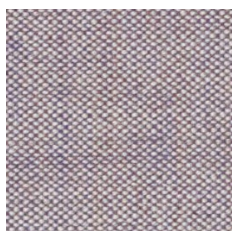
RX 223



RX 123



RX 743



RX 682



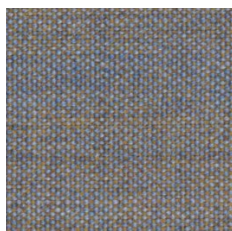
RX 133



RX 393



RX 762



RX 722



RX 753



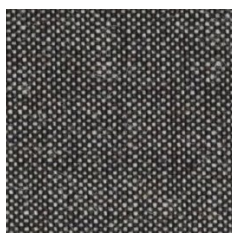
RX 163



RX 383



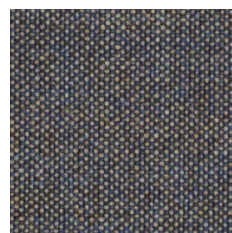
RX 773



RX 152



RX 173



RX 852



RX 362



RX 783



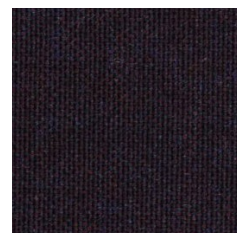
RX 672



RX 873



RX 183



RX 692