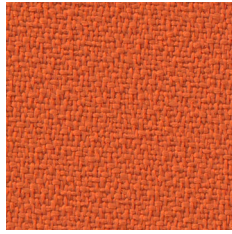


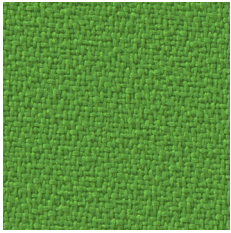
BD 005



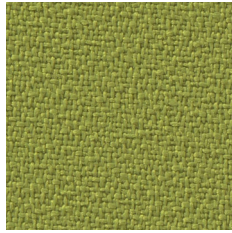
BD 012



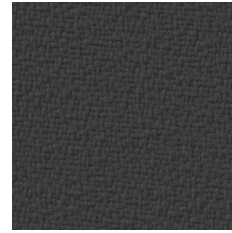
BD 078



BD 048



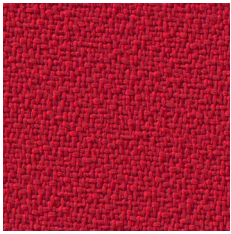
BD 021



BD 033



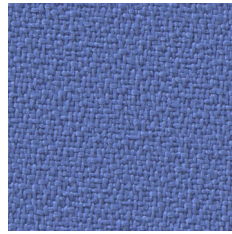
BD 023



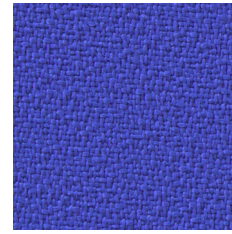
BD 011



BD 004



BD 003



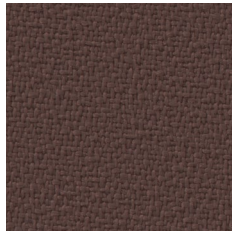
BD 071



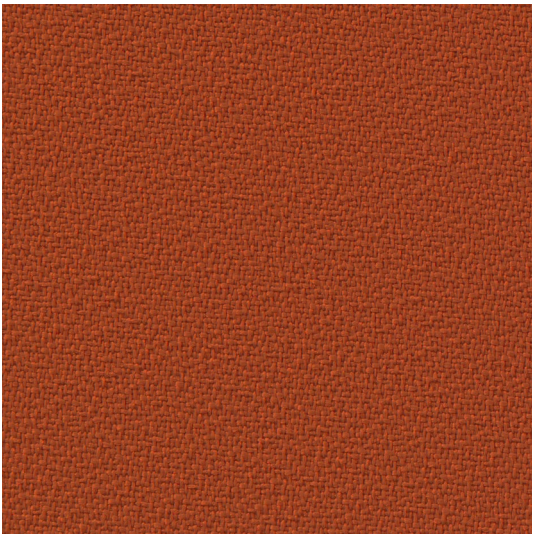
BD 006



BD 008



BD 036



BD 013

PL

Skład
100% poliester

Waga
250 g/m² ± 5%

Szerokość rolki
140 cm

Odporność na ścieranie
>100,000 cykli Martindale
(UNI EN ISO 12947/2):2017

Pilling
5 (UNI EN ISO 12945/2):2002

Odporność na światło
7 (EN ISO 105-B02):2014

Certyfikaty trudnopalności
-BS EN 1021-1:2014
-BS EN 1021-2:2014
-BS 5852:2006 (CRIB 5)
-BS 7176:2007 (Medium Hazard)
-UNI 9175 (1987) 1 IM

DE

Zusammensetzung
100% Polyester

Gewicht
250 g/m² ± 5%

Rollenbreite
140 cm

Scheuerfestigkeit
>100,000 Zyklen Martindale
(UNI EN ISO 12947/2):2017

Pilling
5 (UNI EN ISO 12945/2):2002

Lichtechtheit
7 (EN ISO 105-B02):2014

Feuersicherung
-BS EN 1021-1:2014
-BS EN 1021-2:2014
-BS 5852:2006 (CRIB 5)
-BS 7176:2007 (Medium Hazard)
-UNI 9175 (1987) 1 IM

EN

Composition
100% polyester

Weight
250 g/m² ± 5%

Roll width
140 cm

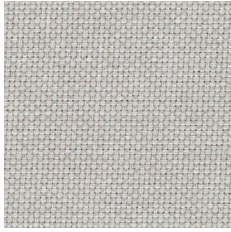
Abrasion Resistance
>100,000 Martindale cycles
(UNI EN ISO 12947/2):2017

Pilling
5 (UNI EN ISO 12945/2):2002

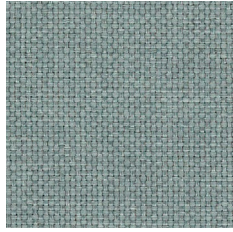
Light Fastness
7 (EN ISO 105-B02):2014

Flammability
-BS EN 1021-1:2014
-BS EN 1021-2:2014
-BS 5852:2006 (CRIB 5)
-BS 7176:2007 (Medium Hazard)
-UNI 9175 (1987) 1 IM

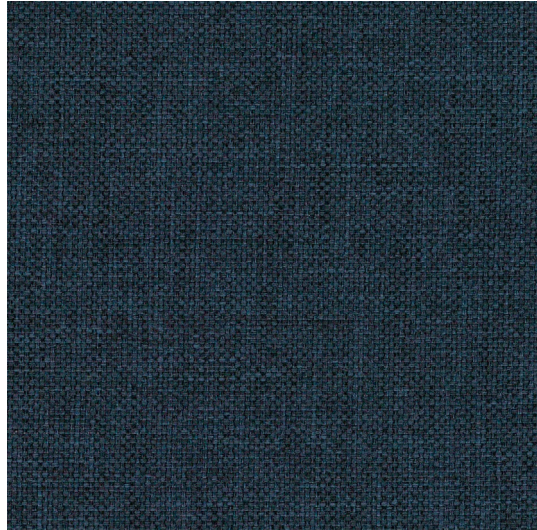




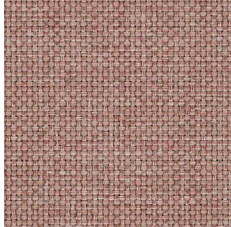
SN 084



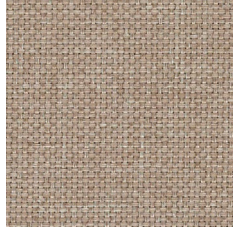
SN 072



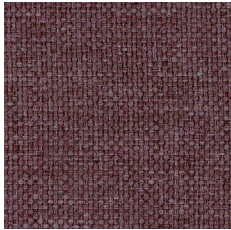
SN 080



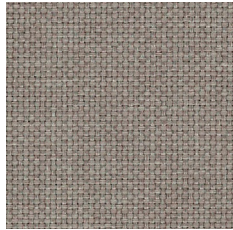
SN 061



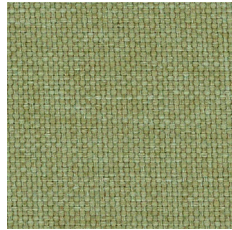
SN 017



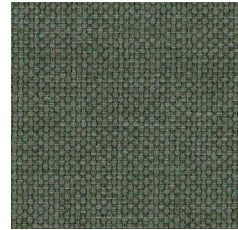
SN 069



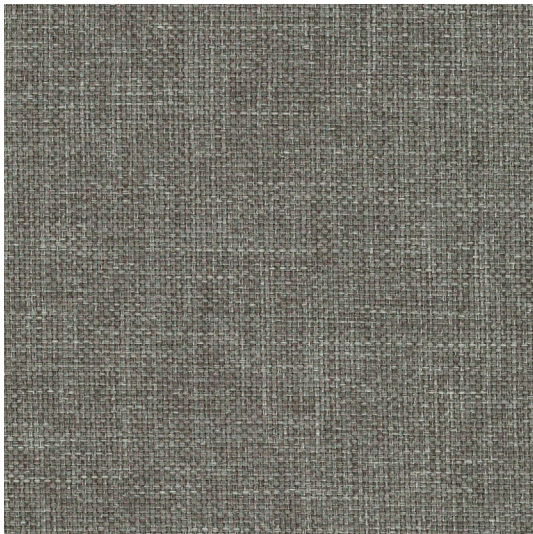
SN 011



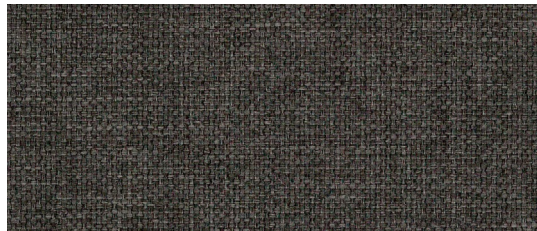
SN 031



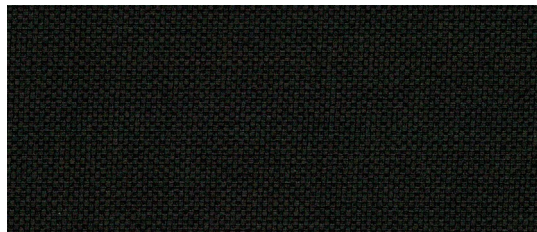
SN 034



SN 021



SN 005



SN 014

PL

Skład
100% Poliester

Waga
245g/m² ± 5%

Szerokość rolki
140 cm

Odporność na ścieranie
70,000 cykli Martindale
(BS EN ISO 12947-2:1999)

Pilling
4-5 (DIN EN ISO 12945/2:2000)

Odporność na światło
4 (EN ISO 105-B02:2013)

Odporność koloru na tarcie
Mokro: 4 (UNI EN ISO 105-X12:2016)
Sucho: 4-5 (UNI EN ISO 105-X12:2016)

Certyfikaty trudnopalności
-DIN EN 1021-1

DE

Zusammensetzung
100% polyester

Gewicht
245g/m² ± 5%

Rollenbreite
140 cm

Scheuerfestigkeit
70,000 Zyklen Martindale
(BS EN ISO 12947-2:1999)

Pilling
4-5 (DIN EN ISO 12945/2:2000)

Lichtechtheit
4 (EN ISO 105-B02:2013)

Reibechtheit
Nass: 4 (UNI EN ISO 105-X12:2016)
Trocken: 4-5 (UNI EN ISO 105-X12:2016)

Feuersicherung
-DIN EN 1021-1

EN

Composition
100% Polyester

Weight
245g/m² ± 5%

Roll width
140 cm

Abrasion Resistance
70,000 Martindale cycles
(BS EN ISO 12947-2:1999)

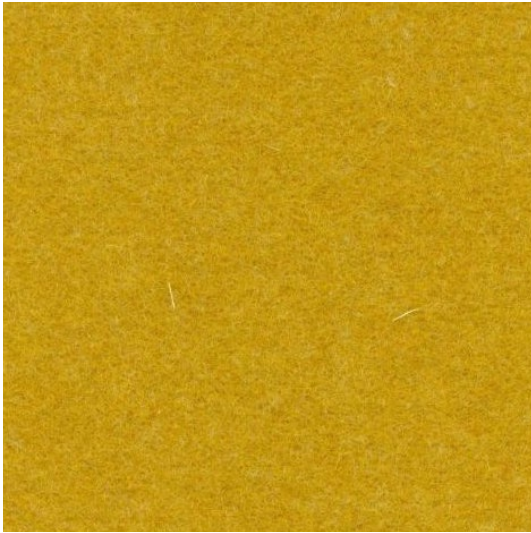
Pilling
4-5 (DIN EN ISO 12945/2:2000)

Light Fastness
4 (EN ISO 105-B02:2013)

Fastness to Rubbing
Wet: 4 (UNI EN ISO 105-X12:2016)
Dry: 4-5 (UNI EN ISO 105-X12:2016)

Flammability
-DIN EN 1021-1





CUZ2W



CUZ39



CUZ18



CUZ21



CUZ90



CUZ63



CUZ1L



CUZ1K



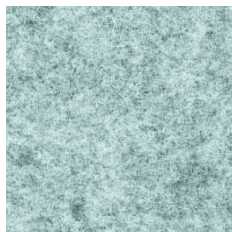
CUZ1N



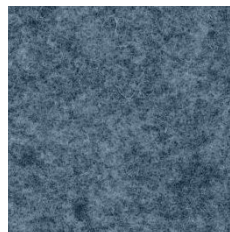
CUZ31



CUZ02



CUZ1R



CUZ1W



CUZ62



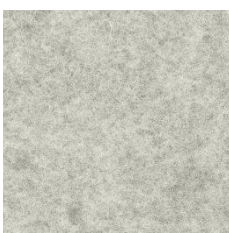
CUZ09



CUZ67



CUZ12



CUZ28



CUZ30



CUZ08



CUZ1E

PL**Skład**

100% Wełna

Waga

460 g/m² ± 5%

Szerokość rolki

140 cm

Odporność na ścieranie

65 000 cykli Martindale'a
(BS EN ISO 12947-2:2016)

Pilling

>3 (UNI EN ISO 12945/2):2000

Odporność na światło

5 (BS EN ISO 105:BO2:2014-BS6)

Odporność koloru na tarcie

Mokre: 5 (BS EN ISO 105-X12:2016)
Suche: 4-5 (BS EN ISO 105-X12:2016)

Certyfikaty trudnopalności

-BS EN 1021 - 1:2014
-BS EN 1021 - 2:2014
-BS7176:2007 Low Hazard
-UN 9175:2010 1IM
-NFD60-013

Czyszczenie

-na sucho

DE**Zusammensetzung**

100% Schurwolle

Gewicht

460 g/m² ± 5%

Rollenbreite

140 cm

Scheuerfestigkeit

65 000 Zyklen Martindale
(BS EN ISO 12947-2:2016)

Pilling

>3 (UNI EN ISO 12945/2):2000

Lichtechtheit

5 (BS EN ISO 105:BO2:2014-BS6)

Reibechtheit

Nass: 5 (BS EN ISO 105-X12:2016)
Trocken: 4-5 (BS EN ISO 105-X12:2016)

Feuersicherung

-BS EN 1021 - 1:2014
-BS EN 1021 - 2:2014
-BS7176:2007 Low Hazard
-UN 9175:2010 1IM
-NFD60-013

Reinigung

-Trockenreinigung

EN**Composition**

100% Virgin Wool

Weight

460 g/m² ± 5%

Roll width

140 cm

Abrasion Resistance

65 000 Martindale cycles
(BS EN ISO 12947-2:2016)

Pilling

>3 (UNI EN ISO 12945/2):2000

Light Fastness

5 (BS EN ISO 105:BO2:2014-BS6)

Fastness to Rubbing

Wet: 5 (BS EN ISO 105-X12:2016)
Dry: 4-5 (BS EN ISO 105-X12:2016)

Flammability

-BS EN 1021 - 1:2014
-BS EN 1021 - 2:2014
-BS7176:2007 Low Hazard
-UN 9175:2010 1IM
-NFD60-013

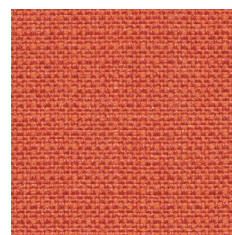
Cleaning

-dry cleaning





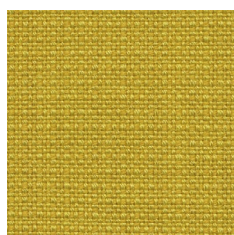
CS 033



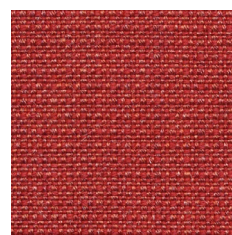
CS 430



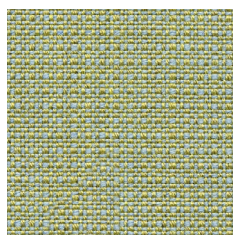
CS 032



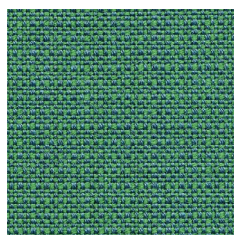
CS 421



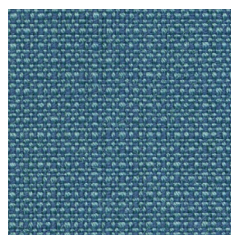
CS 432



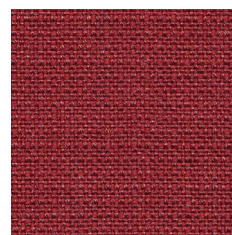
CS 201



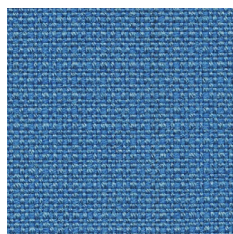
CS 605



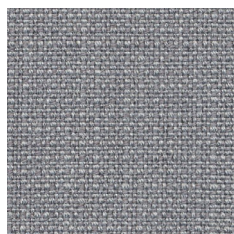
CS 602



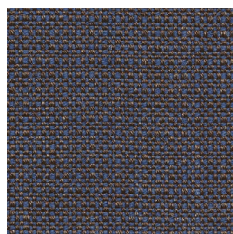
CS 441



CS 601



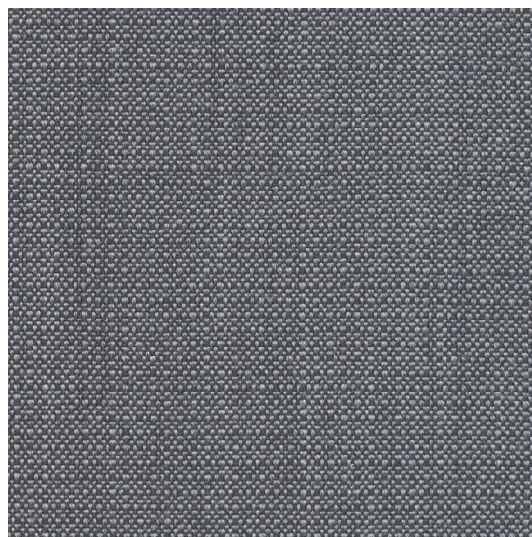
CS 021



CS 125



CS 013



CS 022

PL**Skład**

93% Wełna, 7% Poliamid

Waga

328 g/m²

Szerokość rolki

140 cm

Odporność na ścieranie

200.000 cykli Martindale
(BS EN ISO 12947-2:1998 AC 2008)

Pilling

4-5 (BS EN ISO 12945-2:2000)

Odporność na światło

6-7 (ISO 105-B02)

Odporność koloru na tarcie

Mokre: 5 (UNI EN ISO 105-X12):2016
Suche: 5 (UNI EN ISO 105-X12):2016

Certyfikaty trudnopalności

-BS EN 1021 1&2:2014
-BS:5852 Part 1:1979
-UNI 9175: 2010 Class 1 IM

Inne

-IMO Res. A.652 (16)
-IMO Res.MSC 61 (67) Annex 1, Part 8
-IMO Res.MSC 307 (88) Annex 1, Part 8

DE**Zusammensetzung**

93% Schurwolle, 7% Poliamid

Gewicht

328 g/m²

Rollenbreite

140 cm

Scheuerfestigkeit

200.000 Zyklen Martindale
(BS EN ISO 12947-2:1998 AC 2008)

Pilling

4-5 (BS EN ISO 12945-2:2000)

Lichtechtheit

6-7 (ISO 105-B02)

Reibechtheit

Nass: 4 (UNI EN ISO 105-X12):2016
Trocken: 5 (UNI EN ISO 105-X12):2016

Feuersicherung

-BS EN 1021 1&2:2014
-BS:5852 Part 1:1979
-UNI 9175: 2010 Class 1 IM

Andere

-IMO Res. A.652 (16)
-IMO Res.MSC 61 (67) Annex 1, Part 8
-IMO Res.MSC 307 (88) Annex 1, Part 8

EN**Composition**

93% Wool, 7% Polyamid

Weight

328 g/m²

Roll width

140 cm

Abrasion Resistance

200.000 Martindale cycles
(BS EN ISO 12947-2:1998 AC 2008)

Pilling

4-5 (BS EN ISO 12945-2:2000)

Light Fastness

6-7 (ISO 105-B02)

Fastness to Rubbing

Wet: 4 (UNI EN ISO 105-X12):2016
Dry: 5 (UNI EN ISO 105-X12):2016

Flammability

-BS EN 1021 1&2:2014
-BS:5852 Part 1:1979
-UNI 9175: 2010 Class 1 IM

Other

-IMO Res. A.652 (16)
-IMO Res.MSC 61 (67) Annex 1, Part 8
-IMO Res.MSC 307 (88) Annex 1, Part 8



STU DIO DE SIGN

Nasza misją jest upiększanie rzeczywistości. Tworzymy produkty funkcjonalne i doskonałe wzorniczo. Jednak dopiero dobór odpowiednich tkanin, wzorów i tekstur nadaje im oryginalny i niepowtarzalny design. Tworząc kolekcję Studio Design wybieramy prestiżowe materiały najlepszych europejskich producentów. W kolekcji prezentujemy ofertę takich marek jak: Kwadrat, Svensson, Camira czy Bute. Studio Design to raj dla architektów. Szeroka gama kolorystyczna oraz doskonała jakość tkanin daje nieograniczone możliwości aranżowania przestrzeni i pozwala tworzyć niepowtarzalne projekty.

Unsere Mission ist es, die Realität zu verschönern. Wir entwickeln funktionale Produkte und exzellentes Design. Doch erst die Auswahl geeigneter Stoffe, Muster und Texturen verleiht ihnen ein originelles und einzigartiges Design. Bei der Entwicklung der Kollektion Studio Design wählen wir hochwertige Stoffe der besten europäischen Textilproduzenten aus. Darunter gibt es Kollektionen von Top-Marken wie Kwadrat, Svensson, Camira und Bute. Studio Design ist ein Paradies für Architekten. Die große Auswahl an Farben und die ausgezeichnete Qualität der Stoffe geben unbegrenzte Möglichkeiten der Raumgestaltung und ermöglichen es, einzigartige Designs zu kreieren.

Our mission is to embellish reality. We create functional products and excellent design. However, it is only the selection of appropriate fabrics, patterns and textures that gives them an original and unique design. When creating the Studio Design collection, we choose prestigious fabrics of the best European fabric producers. These include collections of top brands such as: Kwadrat, Svensson, Camira or Bute. Studio Design is a paradise for architects. A wide range of colours and the excellent quality of fabrics give you unlimited possibilities of arranging space and allow you to create unique designs.



POP | AC 255

Skład: 85% wełna, 15% poliamid
Waga: 353 g/m²
 (AC 880: 406 g/m²)
Szerokość rolki: 150 cm
Odporność na ścieranie
 50,000 cykli Martindale'a
 (BS EN ISO 12947-2:1998)
Odporność na światło
 5-7 (ISO 105-B02)
Certyfikaty trudnopalności
 -DIN EN 1021-1

Zusammensetzung:
 85% Schurwolle, 15% Poliamid
Gewicht: 353 g/m²
 (AC 880: 406 g/m²)
Rollenbreite: 150 cm
Scheuerfestigkeit
 50,000 Zyklen Martindale
 (BS EN ISO 12947-2:1998)
Lichtechtheit
 5-7 (ISO 105-B02)
Feuersicherung
 -DIN EN 1021-1

Composition: 85% wool,
 15% poliamid
Weight: 353 g/m²
 (AC 880: 406 g/m²)
Roll width: 150 cm
Abrasion Resistance
 50,000 Martindale cycles
 (BS EN ISO 12947-2:1998)
Light Fastness
 5-7 (ISO 105-B02)
Flammability
 -DIN EN 1021-1



BOK | AC 472



ETAGE | AC 880



AC 482 | CENT



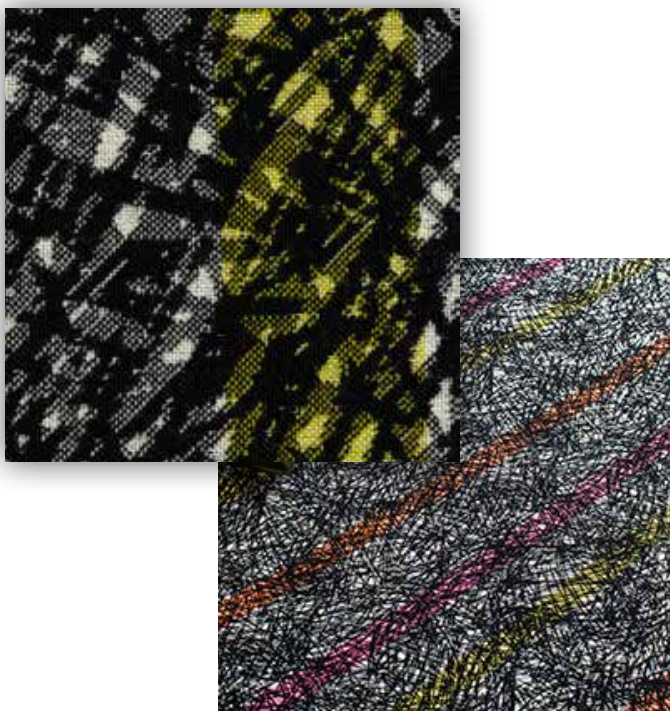
NEST | AC 088



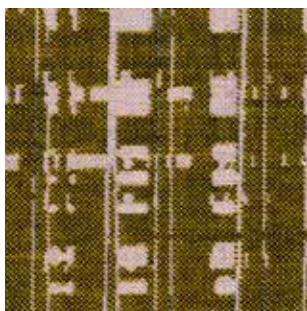
RUBY | AC 312

Design is a silent ambassador
 of your brand.

~ Paul Rand



INFRA | AC 890



SILK | AC 653



RIVER | AC 442



KAJAL | AC 436



LUX | AC 305



RIFF | AC 266