

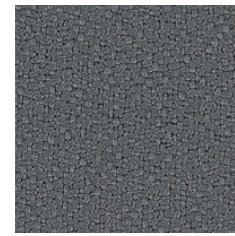
XTREME – PRICE GROUP 1
100% recycled polyester - crêpe structure
stretchy - durable



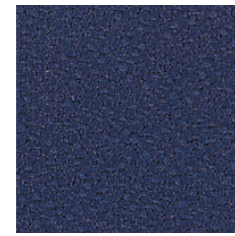
Xtreme – EXR009



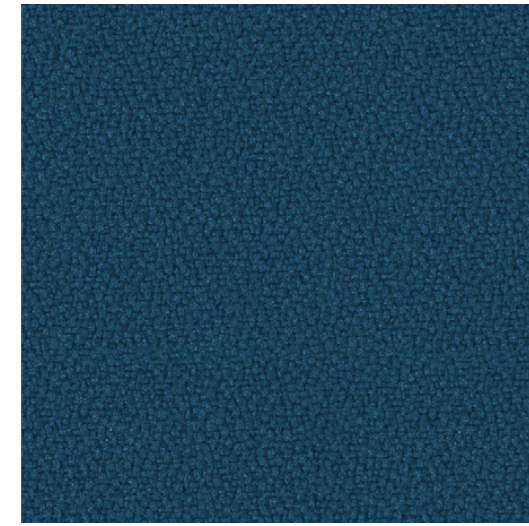
Xtreme – EXR145



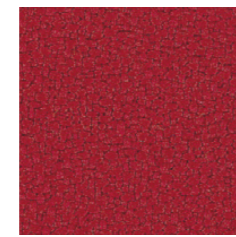
Xtreme – EXR081



Xtreme – EXR024



Xtreme – EXR026



Xtreme – EXR079

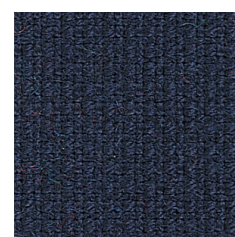
FAME – PRICE GROUP 2
NZ wool worsted - soft - durable
basic structure



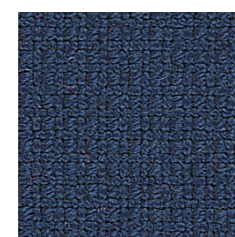
Fame – FM60999



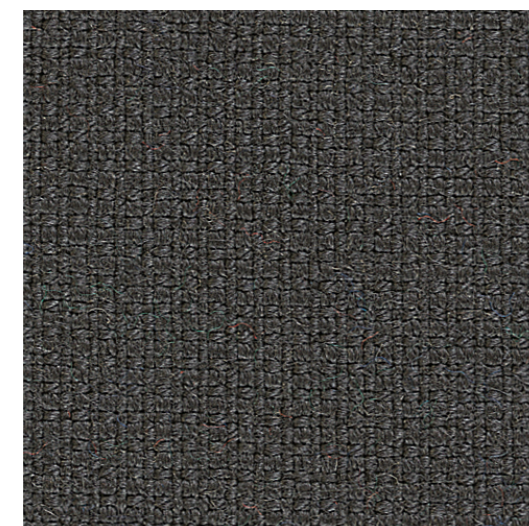
Fame – FM60051



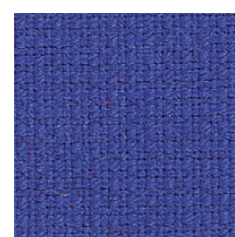
Fame – FM66061



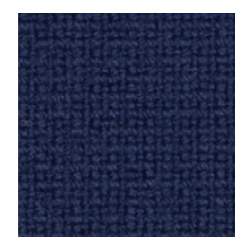
Fame – FM66071



Fame – FM60019



Fame – FM66075



Fame – FM66005



Fame – FM60003

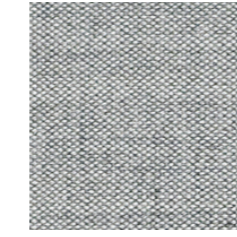


Fame – FM64089

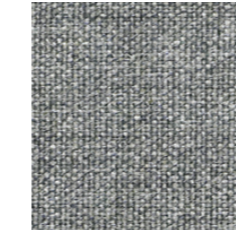
REMIX 2 – PRICE GROUP 3
New wool worsted - plain structure
mélange yarns - fine - durable



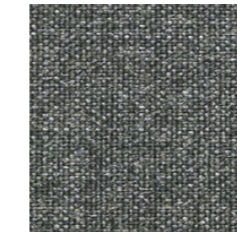
Remix 2 – RMX242



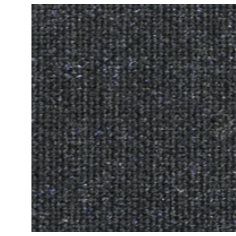
Remix 2 – RMX123



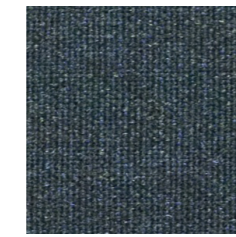
Remix 2 – RMX133



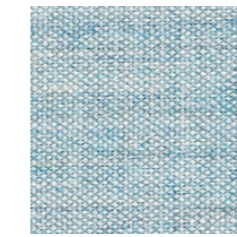
Remix 2 – RMX163



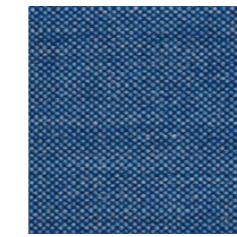
Remix 2 – RMX183



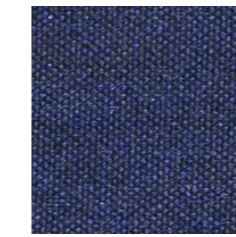
Remix 2 – RMX873



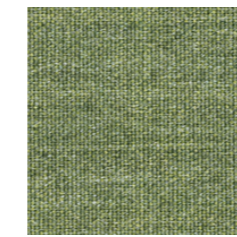
Remix 2 – RMX823



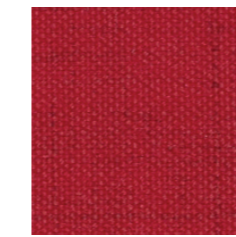
Remix 2 – RMX762



Remix 2 – RMX773

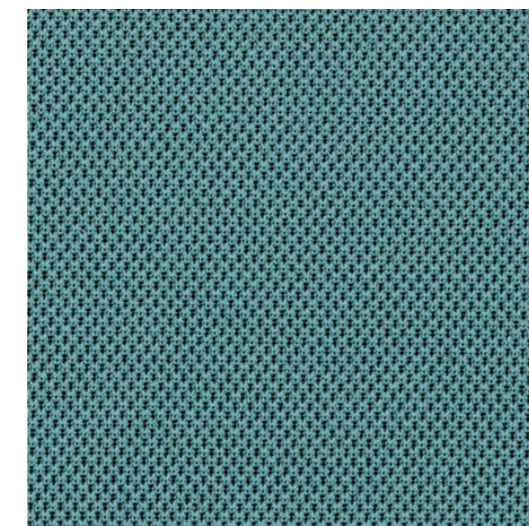


Remix 2 – RMX933

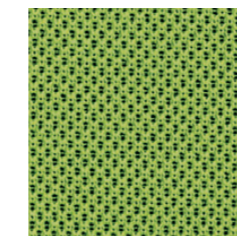


Remix 2 – RMX1662

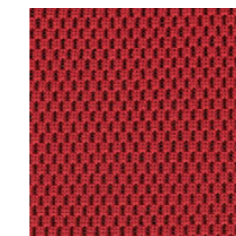
NEXUS – PRICE GROUP 3
Polyester knit - Piqué structure
two-dimensional stretch - durable



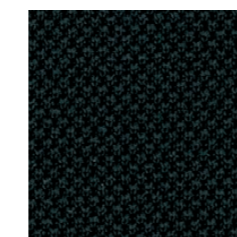
Nexus – NEX10



Nexus – NEX05



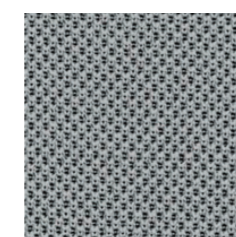
Nexus – NEX16



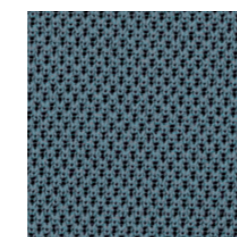
Nexus – NEX11



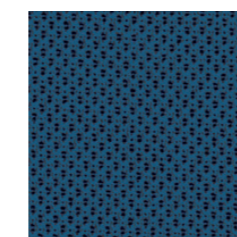
Nexus – NEX13



Nexus – NEX07



Nexus – NEX08

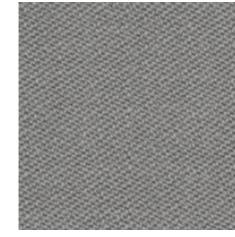


Nexus – NEX03



Nexus – NEX15

NOTE – PRICE GROUP 3
NZ wool worsted - satin structure
soft - strong



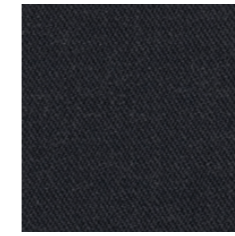
Note – NT61148



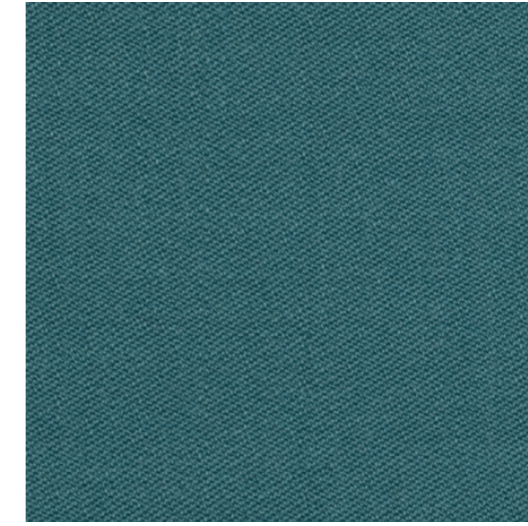
Note – NT60999



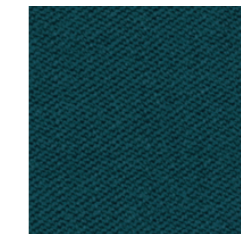
Note – NT60003



Note – NT60087

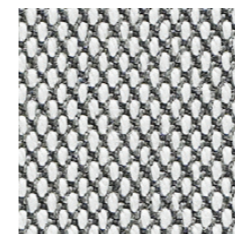


Note – NT67066



Note – NT67033

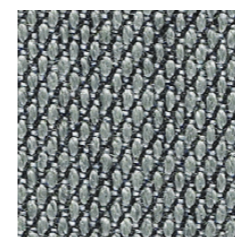
STEELCUT TRIO 2 – PRICE GROUP 4
New wool worsted - semi-plain structure
tricoloured 3D effect - solid - hard wearing



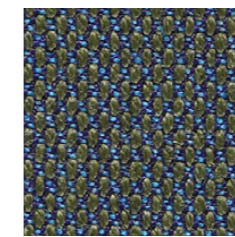
Steelcut Trio 2 – STT133



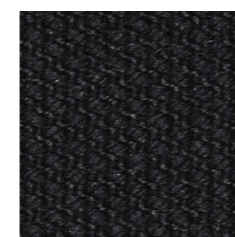
Steelcut Trio 2 – STT1652



Steelcut Trio 2 – STT153



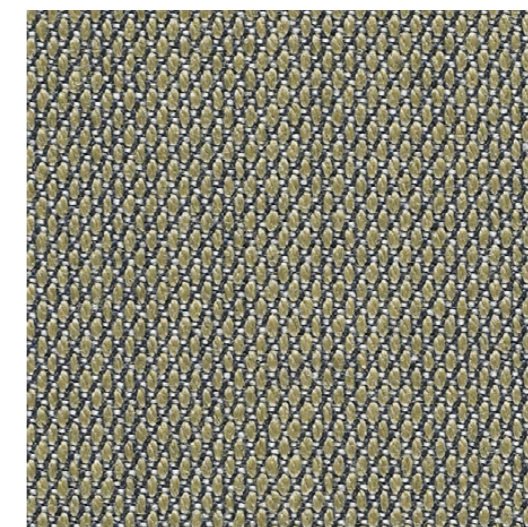
Steelcut Trio 2 – STT883



Steelcut Trio 2 – STT1192



Steelcut Trio 2 – STT383



Steelcut Trio 2 – STT253

SIRDAL AND SULDAL – PRICE GROUP 4
100% pure Norwegian wool - wollen
granitic structure - high resilience - durable



Suldal – SUL 823



Sirdal – SRD 190

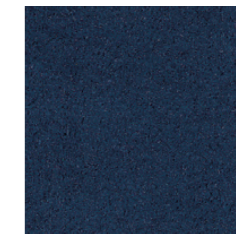


Suldal – SUL 180



Sirdal – SRD 820

COMFORT+ – PRICE GROUP 4
37% recycled polyester
microfibre - soft - hard wearing



Comfort+ – CMF0040



Comfort+ – CMF0050

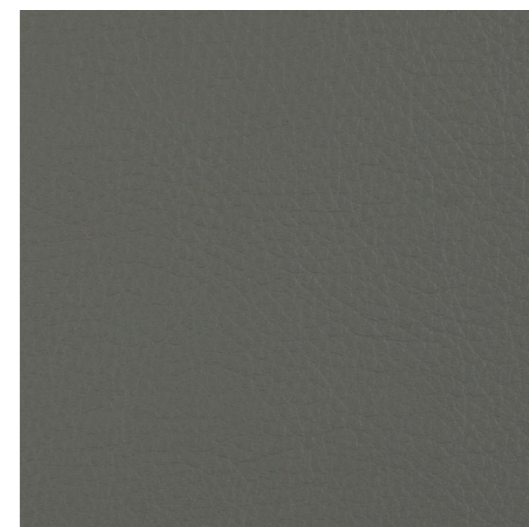


Comfort+ – CMF1414



Comfort+ – CMF0049

PALOMA – PRICE GROUP 6
Cow leather - chrome-free semi-aniline
soft - high durability



Paloma – ATG55115



Paloma – ATG55130



Paloma – ATG56100



Paloma – ATG55206



Paloma Soft – ATG55185

FABRICS AND COLOURS

STANDARD COLLECTION

Making the world
a better place to sit

STANDARD COLLECTION – TECHNICAL SPECIFICATIONS

	XTREME by Camira	FAME by Gabriel	REMIX 2 by Kvadrat	NEXUS by Camira	NOTE by Gabriel	STEELCUT TRIO 2 by Kvadrat	SIRDAL/SULDAL by GU*	COMFORT+ by Gabriel	PALOMA by Wollsdorf
COMPOSITION (%)									
Wool	-	95	90	-	85	90	-	-	-
Norwegian wool	-	-	-	-	-	-	100	-	-
Polyurethane	-	-	-	-	-	-	-	12	-
Polyamide	-	5	10	-	15	10	-	-	-
Polyester	-	-	-	100	-	-	-	51	-
Recycled Polyester	100	-	-	-	-	-	-	37	-
Cow leather (semi-aniline)	-	-	-	-	-	-	-	-	100
ENVIRONMENTAL FACTS									
EU Ecolabel	♦	♦	♦	-	♦	♦	-	-	-
Oeko-Tex® Standard 100	-	♦	-	-	♦	-	-	♦	-
ISO 14001 certified (company)	♦	♦	♦	♦	♦	♦	♦	♦	♦
100% free of heavy metals	♦	♦	♦	-	♦	♦	♦	♦	-
ECO_L	-	-	-	-	-	-	-	-	♦
Blue Angel RAL-U2 148	-	-	-	-	-	-	-	-	♦
Chrome-free leather tanning	-	-	-	-	-	-	-	-	♦
FLAMMABILITY									
BS EN 1021 – Cig. & Match	♦	♦	♦	♦	♦	♦	♦	♦	♦
BS 7176 Low Hazard	♦	-	♦	♦	-	♦	-	-	-
BS 7176 Medium Hazard	♦	-	-	-	-	-	-	-	-
NF – P – 92 – 503 MI	♦	-	-	-	-	-	-	-	-
DIN 4102 BI	♦	-	-	-	-	-	-	-	-
BS 5852 P 2 crib 5	♦	♦	-	-	♦	-	-	-	♦
CA TB 117-2013	-	♦	♦	-	♦	♦	-	♦	-
IMO A.652 (16)	-	♦	♦	-	♦	♦	♦	-	♦
FASTNESS TO RUBBING									
Dry	4	4-5	4-5	4	4-5	4-5	4-5	4-5	1000/4
Wet	4	4-5	4	4	4	4	4	4	80/4
OTHER									
Weight (g/m)	434	630	415	530	510	770	800	385	-
Width (cm)	140	140	138	173	140	140	130	140	-
Abrasion (Martindale)	100 000	200 000	100 000	100 000	200 000	100 000	>57 000	150 000	-
Pilling	5	4	3-4	5	4	3-4	3-4	5	-
Light fastness	6	5-7	5-7	5	5-7	5-7	5-7	5-7	6
MAINTENANCE To be vacuumed with a furniture brush or wiped with a clean, white cloth or sponge slightly dampened with clean lukewarm water.									

See suppliers web pages for full technical specifications:

Camira: www.camirafabrics.com
 Gabriel: www.gabriel.dk
 GU*: www.gu.no
 Kvadrat: www.kvadrat.dk
 Wollsdorf: www.wollsdorf.com

* Gudbrandsdalens Uldvarefabrik