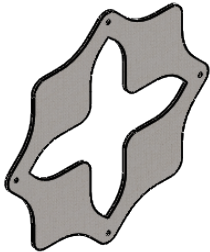


Cobogo guide



Innehåll

Content



x12 / x3
Cobogo panel



x50 / x14
Kopplingsnit /
Clutch rivet

Upphångningsbeslag till tak, vägg samt
vajerupphångning köps separat

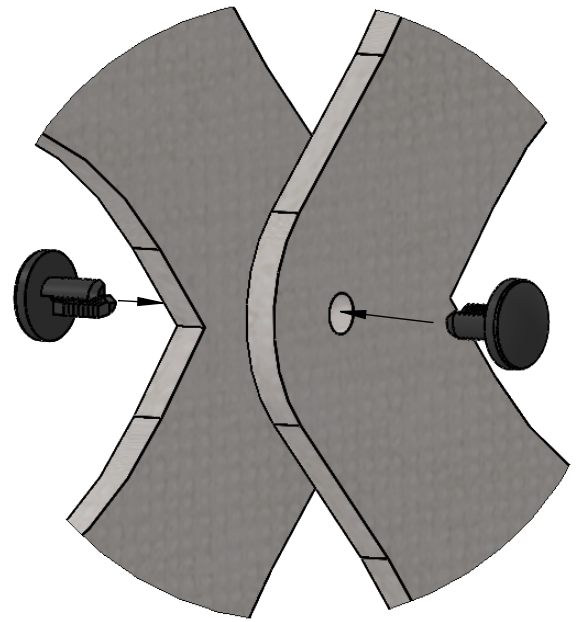
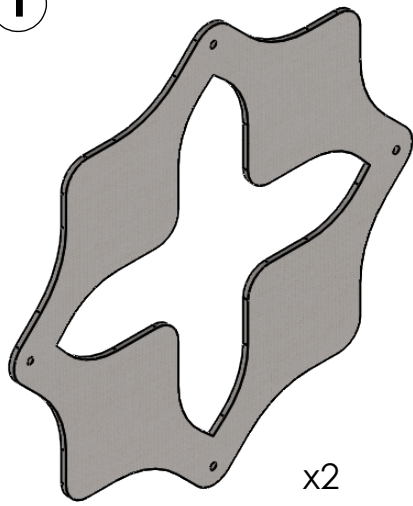
Fittings for ceiling, wall and wire suspension
are bought separately

Antal paneler vertikalt beroende på takhöjd

Amount of panels in vertical position depending on height of ceiling

| Takhöjd/ Ceiling height | Paneler/ Panels | Panelers höjd exkl. upphångning/ Height of panels excl. suspension |
|----------------------------|--------------------|---|
| 2300 mm | 6 | 2082 mm |
| 2400 mm | 6 | 2082 mm |
| 2500 mm | 7 | 2424 mm |
| 2600 mm | 7 | 2424 mm |
| 2700 mm | 7 | 2424 mm |
| 2800 mm | 7 | 2424 mm |
| 2900 mm | 8 | 2766 mm |
| 3000 mm | 8 | 2766 mm |

1



Montera ihop panelerna med medföljande kopplingsnitarna.
2st träs in i motsatt hål i panelerna för att sedan kopplas ihop.

Assemble the panels with included rivets.
2 pcs threads through the opposite holes in the panels to be clicked together.

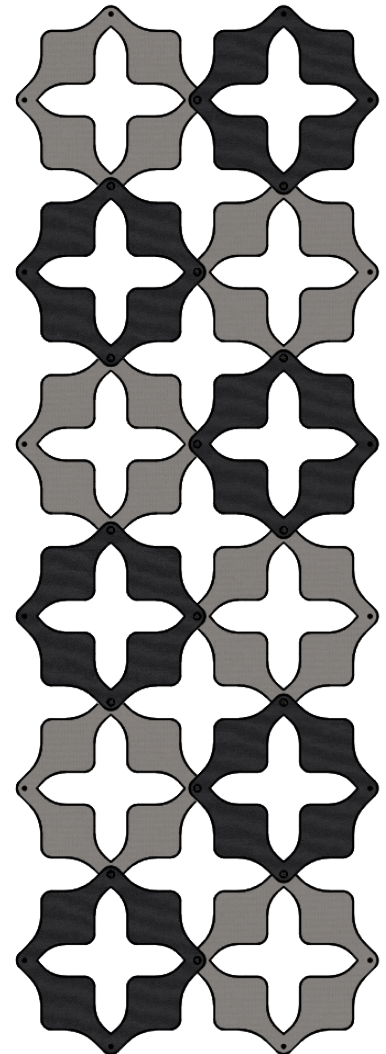
2

Montera panelerna enklast på en plan yta med kopplingsnitarna
för att sedan hängas upp i valt beslag.
Montera panelerna varannan över och varannan under.

Assemble the panels on a flat surface with included rivets
and then mount them in the fittings of your choice.
Assemble the panels every other on top and every other underneath.

**Ljusa paneler illustrerar paneler monterade under
och mörka paneler illustrerar paneler monterade ovanför.**

**Light panels illustrate panel mounted underneath and
dark panels illustrate panels mounted on top.**



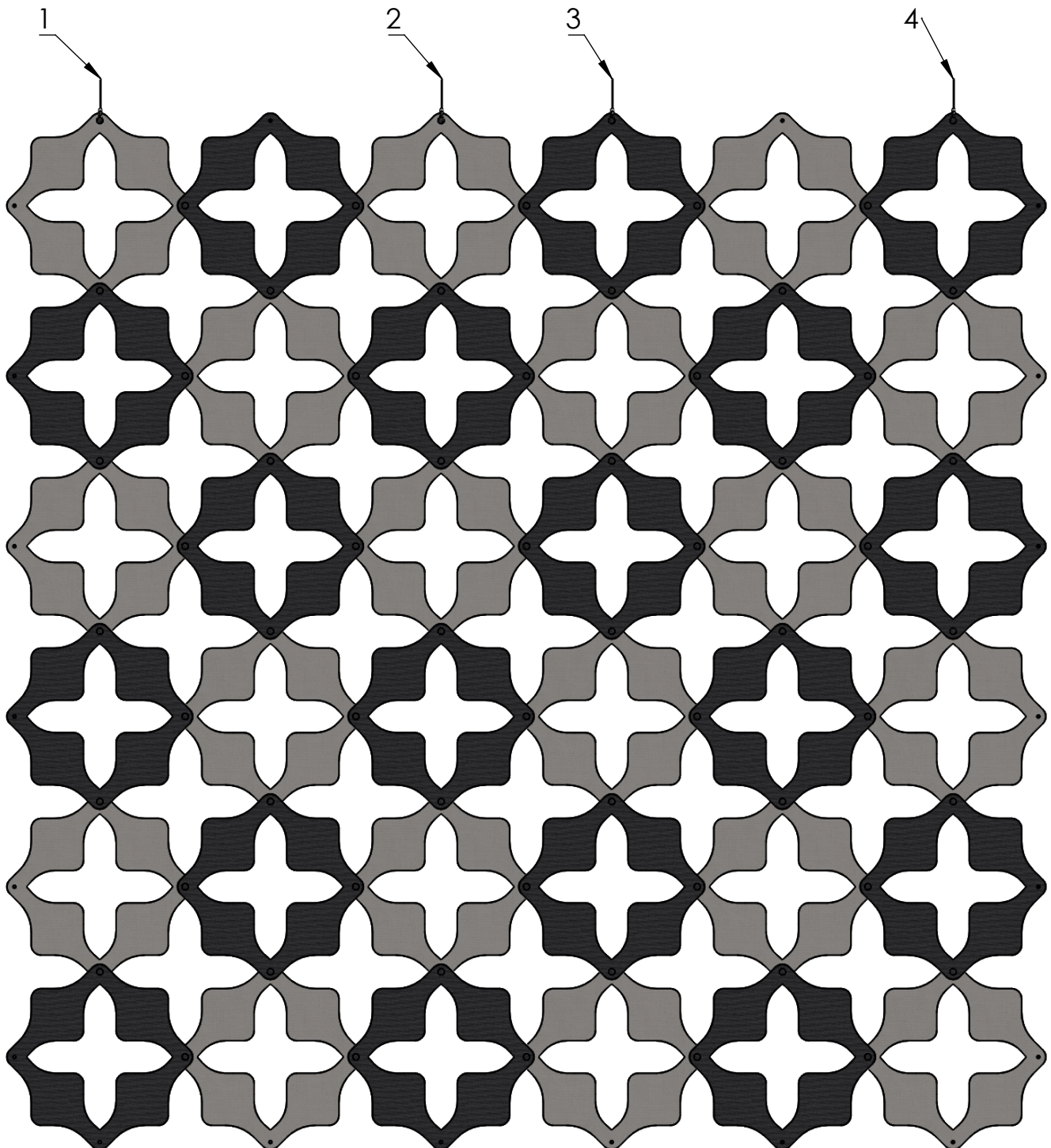
1 Upphängning Suspension

Montera varannan panel i tak/väggfäste eller vajer med kopplingsnitarna.
Vid jämnt antal paneler krävs en extra upphängning.
Första och sista panelen monteras alltid med tak/väggfäste eller vajer.

Mount every other panel in the ceiling/wall fittings or wire with the rivets when mounting an even quantity.
When mounting an even amount of panels extra fitting are required.
The first and the last panel are always mounted in the ceiling/wall fittings or wire.

Exempel 1, jämnt antal paneler med vajer.

Example 1, even amount of panels with wire.



1 Upphängning Suspension

Montera varannan panel i tak/väggfäste eller vajer med kopplingsnitarna.
Vid jämnt antal paneler krävs en extra upphängning.
Första och sista panelen monteras alltid med tak/väggfäste eller vajer.

Mount every other panel in the ceiling/wall fittings or wire with the rivets when mounting an even quantity.
When mounting an even amount of panels extra fitting are required.
The first and the last panel are always mounted in the ceiling/wall fittings or wire.

Exempel 2, ojämnt antal paneler med vajer.

Example 2, uneven amount of panels with wire.

