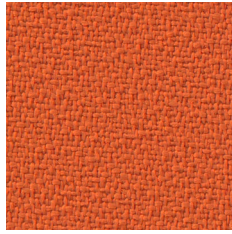


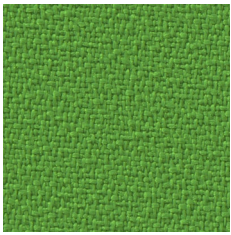
BD 005



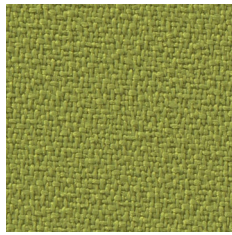
BD 012



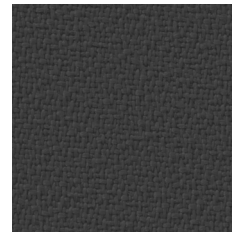
BD 078



BD 048



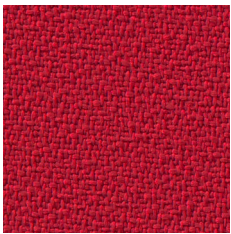
BD 021



BD 033



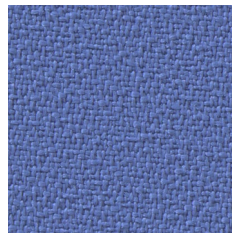
BD 023



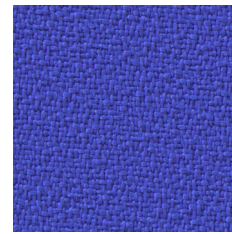
BD 011



BD 004



BD 003



BD 071



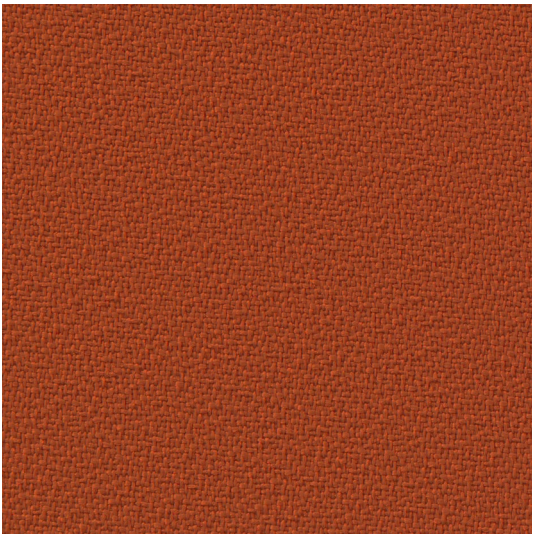
BD 006



BD 008



BD 036



BD 013

**PL**

**Skład**  
100% poliester

**Waga**  
250 g/m<sup>2</sup> ± 5%

**Szerokość rolki**  
140 cm

**Odporność na ścieranie**  
>100,000 cykli Martindale  
(UNI EN ISO 12947/2):2017

**Pilling**  
5 (UNI EN ISO 12945/2):2002

**Odporność na światło**  
7 (EN ISO 105-B02):2014

**Certyfikaty trudnopalności**  
-BS EN 1021-1:2014  
-BS EN 1021-2:2014  
-BS 5852:2006 (CRIB 5)  
-BS 7176:2007 (Medium Hazard)  
-UNI 9175 (1987) 1 IM

**DE**

**Zusammensetzung**  
100% Polyester

**Gewicht**  
250 g/m<sup>2</sup> ± 5%

**Rollenbreite**  
140 cm

**Scheuerfestigkeit**  
>100,000 Zyklen Martindale  
(UNI EN ISO 12947/2):2017

**Pilling**  
5 (UNI EN ISO 12945/2):2002

**Lichtechtheit**  
7 (EN ISO 105-B02):2014

**Feuersicherung**  
-BS EN 1021-1:2014  
-BS EN 1021-2:2014  
-BS 5852:2006 (CRIB 5)  
-BS 7176:2007 (Medium Hazard)  
-UNI 9175 (1987) 1 IM

**EN**

**Composition**  
100% polyester

**Weight**  
250 g/m<sup>2</sup> ± 5%

**Roll width**  
140 cm

**Abrasion Resistance**  
>100,000 Martindale cycles  
(UNI EN ISO 12947/2):2017

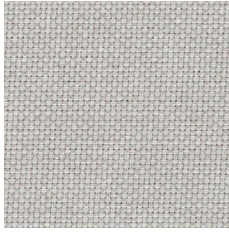
**Pilling**  
5 (UNI EN ISO 12945/2):2002

**Light Fastness**  
7 (EN ISO 105-B02):2014

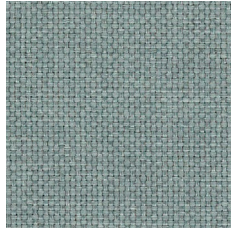
**Flammability**  
-BS EN 1021-1:2014  
-BS EN 1021-2:2014  
-BS 5852:2006 (CRIB 5)  
-BS 7176:2007 (Medium Hazard)  
-UNI 9175 (1987) 1 IM



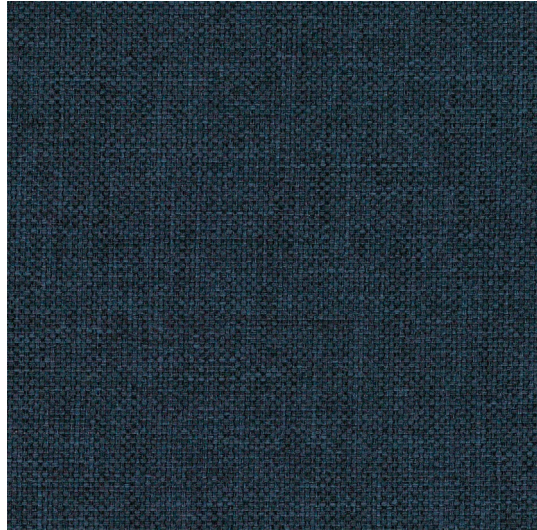




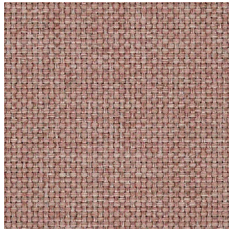
SN 084



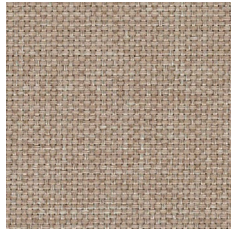
SN 072



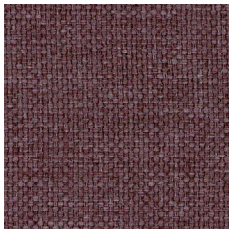
SN 080



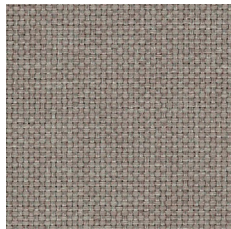
SN 061



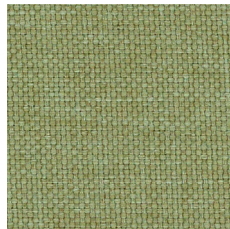
SN 017



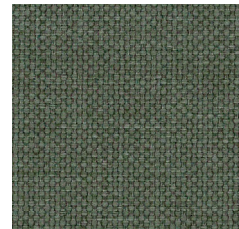
SN 069



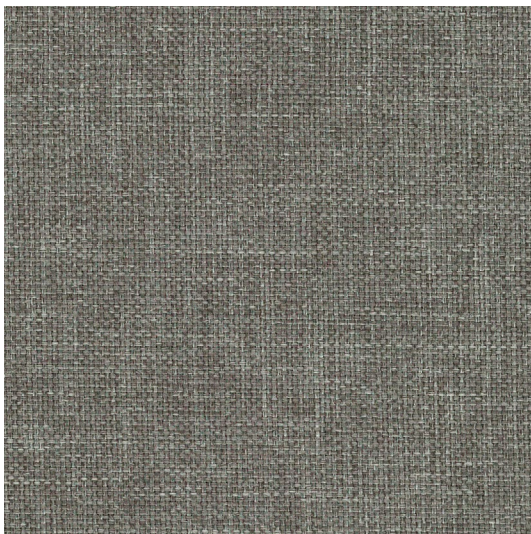
SN 011



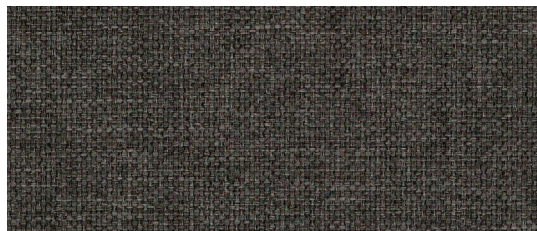
SN 031



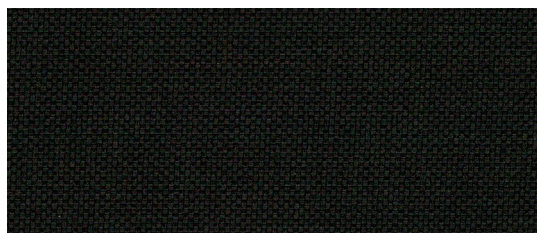
SN 034



SN 021



SN 005



SN 014

**PL**

**Skład**  
100% Poliester

**Waga**  
245g/m<sup>2</sup> ± 5%

**Szerokość rolki**  
140 cm

**Odporność na ścieranie**  
70,000 cykli Martindale  
(BS EN ISO 12947-2:1999)

**Pilling**  
4-5 (DIN EN ISO 12945/2:2000)

**Odporność na światło**  
4 (EN ISO 105-B02:2013)

**Odporność koloru na tarcie**  
Mokro: 4 (UNI EN ISO 105-X12:2016)  
Sucho: 4-5 (UNI EN ISO 105-X12:2016)

**Certyfikaty trudnopalności**  
-DIN EN 1021-1

**DE**

**Zusammensetzung**  
100% polyester

**Gewicht**  
245g/m<sup>2</sup> ± 5%

**Rollenbreite**  
140 cm

**Scheuerfestigkeit**  
70,000 Zyklen Martindale  
(BS EN ISO 12947-2:1999)

**Pilling**  
4-5 (DIN EN ISO 12945/2:2000)

**Lichtechtheit**  
4 (EN ISO 105-B02:2013)

**Reibechtheit**  
Nass: 4 (UNI EN ISO 105-X12:2016)  
Trocken: 4-5 (UNI EN ISO 105-X12:2016)

**Feuersicherung**  
-DIN EN 1021-1

**EN**

**Composition**  
100% Polyester

**Weight**  
245g/m<sup>2</sup> ± 5%

**Roll width**  
140 cm

**Abrasion Resistance**  
70,000 Martindale cycles  
(BS EN ISO 12947-2:1999)

**Pilling**  
4-5 (DIN EN ISO 12945/2:2000)

**Light Fastness**  
4 (EN ISO 105-B02:2013)

**Fastness to Rubbing**  
Wet: 4 (UNI EN ISO 105-X12:2016)  
Dry: 4-5 (UNI EN ISO 105-X12:2016)

**Flammability**  
-DIN EN 1021-1







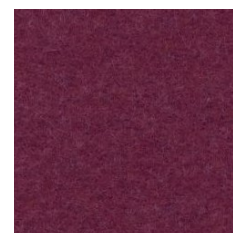
CUZ2W



CUZ39



CUZ18



CUZ21



CUZ90



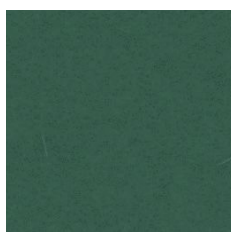
CUZ63



CUZ1L



CUZ1K



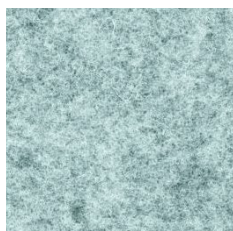
CUZ1N



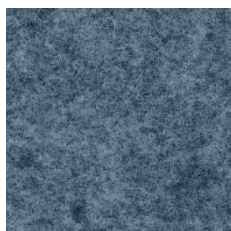
CUZ31



CUZ02



CUZ1R



CUZ1W



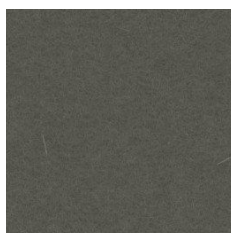
CUZ62



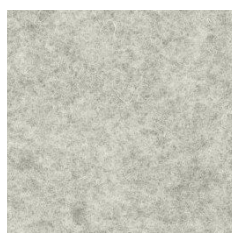
CUZ09



CUZ67



CUZ12



CUZ28



CUZ30



CUZ08



CUZ1E

**PL**

**Skład**  
100% Wełna

**Waga**  
460 g/m<sup>2</sup> ± 5%

**Szerokość rolki**  
140 cm

**Odporność na ścieranie**  
65 000 cykli Martindale'a  
(BS EN ISO 12947-2:2016)

**Pilling**  
>3 (UNI EN ISO 12945/2):2000

**Odporność na światło**  
5 (BS EN ISO 105:BO2:2014-BS6)

**Odporność koloru na tarcie**  
Mokre: 5 (BS EN ISO 105-X12:2016)  
Suche: 4-5 (BS EN ISO 105-X12:2016)

**Certyfikaty trudnopalności**  
-BS EN 1021 - 1:2014  
-BS EN 1021 - 2:2014  
-BS7176:2007 Low Hazard  
-UN 9175:2010 1IM  
-NFD60-013

**Czyszczenie**  
-na sucho

**DE**

**Zusammensetzung**  
100% Schurwolle

**Gewicht**  
460 g/m<sup>2</sup> ± 5%

**Rollenbreite**  
140 cm

**Scheuerfestigkeit**  
65 000 Zyklen Martindale  
(BS EN ISO 12947-2:2016)

**Pilling**  
>3 (UNI EN ISO 12945/2):2000

**Lichtechtheit**  
5 (BS EN ISO 105:BO2:2014-BS6)

**Reibechtheit**  
Nass: 5 (BS EN ISO 105-X12:2016)  
Trocken: 4-5 (BS EN ISO 105-X12:2016)

**Feuersicherung**  
-BS EN 1021 - 1:2014  
-BS EN 1021 - 2:2014  
-BS7176:2007 Low Hazard  
-UN 9175:2010 1IM  
-NFD60-013

**Reinigung**  
-Trockenreinigung

**EN**

**Composition**  
100% Virgin Wool

**Weight**  
460 g/m<sup>2</sup> ± 5%

**Roll width**  
140 cm

**Abrasion Resistance**  
65 000 Martindale cycles  
(BS EN ISO 12947-2:2016)

**Pilling**  
>3 (UNI EN ISO 12945/2):2000

**Light Fastness**  
5 (BS EN ISO 105:BO2:2014-BS6)

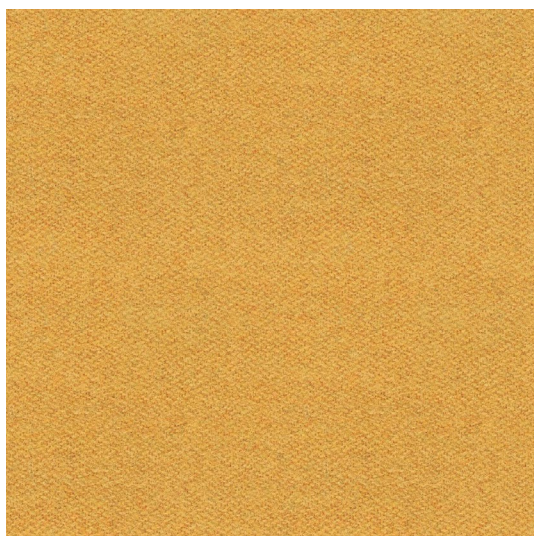
**Fastness to Rubbing**  
Wet: 5 (BS EN ISO 105-X12:2016)  
Dry: 4-5 (BS EN ISO 105-X12:2016)

**Flammability**  
-BS EN 1021 - 1:2014  
-BS EN 1021 - 2:2014  
-BS7176:2007 Low Hazard  
-UN 9175:2010 1IM  
-NFD60-013

**Cleaning**  
-dry cleaning



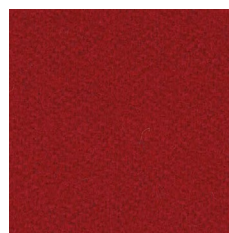




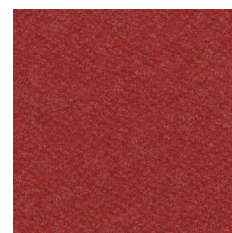
LDS 44



LDS 80



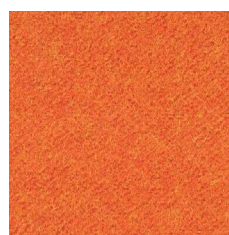
LDS 86



LDS 85



LDS 28



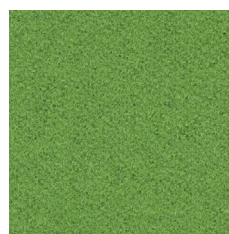
LDS 82



LDS 81



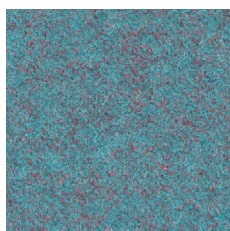
LDS 46



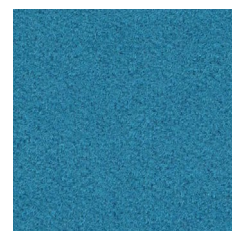
LDS 47



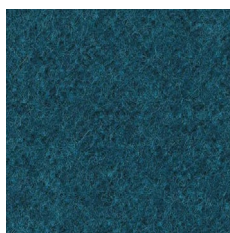
LDS 55



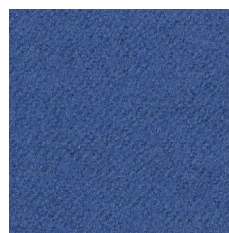
LDS 56



LDS 57



LDS 59



LDS 63



LDS 62



LDS 08



LDS 21



LDS 16



LDS 35



LDS 17

**PL****Skład**

95% Wełna, 5% Poliamid

**Waga**

400g/m<sup>2</sup> ± 5%

**Szerokość rolki**

140 cm

**Odporność na ścieranie**

100.000 cykli Martindale  
(BS EN ISO 12947-2: 2016)

**Pilling**

4 (BS EN ISO 12945-2: 2000)

**Odporność na światło**

5 (BS EN ISO 105-B02: 2014-BS6)

**Odporność koloru na tarcie**

Mokre: 4 (UNI EN ISO 105-X12)  
Suche: 4 (UNI EN ISO 105-X12)

**Certyfikaty trudnopalności**

-BS EN 1021-1: 2014  
-BS EN 1021-2: 2014  
-BS 7176 Low Hazard  
-UNI 9175: 2010 Class 1 IM  
-ÖNORM B 3825 & A 3800-1

**DE****Zusammensetzung**

95% Schurwolle, 5% Polyamid

**Gewicht**

400g/m<sup>2</sup> ± 5%

**Rollenbreite**

140 cm

**Scheuerfestigkeit**

100.000 Zyklen Martindale  
(BS EN ISO 12947-2: 2016)

**Pilling**

4 (BS EN ISO 12945-2: 2000)

**Lichtechtheit**

5 (BS EN ISO 105-B02: 2014-BS6)

**Reibechtheit**

Nass: 4 (UNI EN ISO 105-X12)  
Trocken: 4 (UNI EN ISO 105-X12)

**Feuersicherung**

-BS EN 1021-1: 2014  
-BS EN 1021-2: 2014  
-BS 7176 Low Hazard  
-UNI 9175: 2010 Class 1 IM  
-ÖNORM B 3825 & A 3800-1

**EN****Composition**

95% Virgin Wool, 5% Polyamide

**Weight**

400g/m<sup>2</sup> ± 5%

**Roll width**

140 cm

**Abrasion Resistance**

100.000 Martindale cycles  
(BS EN ISO 12947-2: 2016)

**Pilling**

4 (BS EN ISO 12945-2: 2000)

**Light Fastness**

5 (BS EN ISO 105-B02: 2014-BS6)

**Fastness to Rubbing**

Wet: 4 (UNI EN ISO 105-X12)  
Dry: 4 (UNI EN ISO 105-X12)

**Flammability**

-BS EN 1021-1: 2014  
-BS EN 1021-2: 2014  
-BS 7176 Low Hazard  
-UNI 9175: 2010 Class 1 IM  
-ÖNORM B 3825 & A 3800-1

