

ERA



KLÖBER 

Klöber GmbH | Hauptstraße 1 | 88696 Owingen/Bodensee | Germany
Tel. +49 (0) 75 51-838-0 | Fax +49 (0) 75 51-838-142 | www.kloeber.com | info@kloeber.com

KLÖBER 

Era (Camira)	Preisgruppe 4
Material: 100% Polyester	
Stoffgewicht/lfm: 320 g/m ² ±5% (448 g/lfd.M ±5%)	
Breite: 140 cm	
Scheuerfestigkeit: ≥100.000 Martindale (BS EN ISO 12947)	
Lichtechtheit: 5 (ISO 105-B02)	
Pilling (Knötchenbildung): 4-5 (BS EN ISO 12945-2)	
Reibechtheit nass/trocken: 4/4 (ISO 105-X12)	
Brandschutznormen: Schwer entflammbar (EN 1021 1+2; BS 7176 Low Hazard)	
Ökologie: Nicht schwermetallhaltige Farbstoffe; nach Zertifikat OEKO-TEX Standard 100	

Verschiedene Fertigungspartien gewährleisten nicht immer eine exakte Übereinstimmung der Farben und Strukturen. Geringe Abweichungen bei Nachlieferungen berechtigen nicht zum Ersatzanspruch.

Era (Camira)	Price group 4
Material: 100% Polyester	
Fabric weight/lm: 320 g/m ² ±5% (448 g/lfd.M ±5%)	
Width: 140 cm	
Abrasion resistance: ≥100.000 Martindale (BS EN ISO 12947)	
Light fastness: 5 (ISO 105-B02)	
Pilling: 4-5 (BS EN ISO 12945-2)	
Colour fastness to rubbing wet/dry: 4/4 (ISO 105-X12)	
Fire Resistance Standards: Flame retardant (EN 1021 part 1+2; BS 7176 Low Hazard)	
Ecology: Non metallic dyestuffs; certified to OEKO-TEX Standard 100	

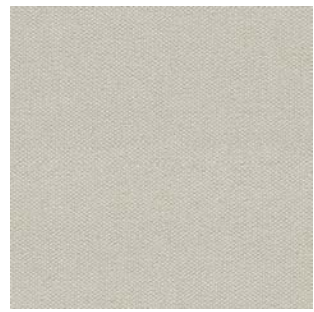
If different production lots are used, it is not always possible to guarantee an exact match of colours and textures. Slight variations in subsequent batches are not grounds for a compensation claim.

Era (Camira)	Prijsgroep 4
Materiaal: 100% Polyester	
Stofgewicht/str.m.: 320 g/m ² ±5% (448 g/lfd.M ±5%)	
Breedte: 140 cm	
Aantal toeren: ≥100.000 Martindale (BS EN ISO 12947)	
Lichtechtheid: 5 (ISO 105-B02)	
Pluizen: 4-5 (BS EN ISO 12945-2)	
Wrijvingechtheid nat/droog: 4/4 (ISO 105-X12)	
Brandveiligheidsnormen: Moeilijk ontvlambaar (EN 1021 1+2; BS 7176 Low Hazard)	
Ecologie: Kleurstoffen die geen zware metalen bevatten; na certificaat OEKO-TEX Standard 100.	

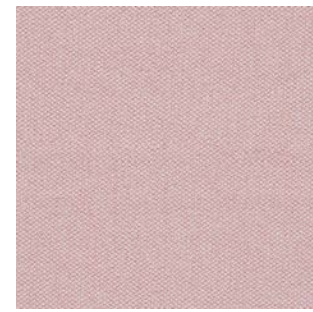
Door verschillende productiepartijen is niet altijd een exacte overeenstemming van de kleuren en structuren gewaarborgd. Geringe afwijkingen bij naleveringen zijn onontkoombaar en geven geen recht op schadevergoeding.

Era (Camira)	Groupe de prix 4
Composition: 100% Polyester	
Poids du tissu/ml: 320 g/m ² ±5% (448 g/lfd.M ±5%)	
Largeur: 140 cm	
Nombre de tours d'abrasion: ≥100.000 Martindale (BS EN ISO 12947)	
Tenue à la lumière: 5 (ISO 105-B02)	
Boulochage: 4-5 (BS EN ISO 12945-2)	
Résistance au frottement à humide/sec: 4/4 (ISO 105-X12)	
Normes anti-feu: Difficilement inflammable (EN 1021 partie 1+2; BS 7176 Low Hazard)	
Ecologie: Teintures non métalliques; Certifié à OEKO-TEX Standard 100	

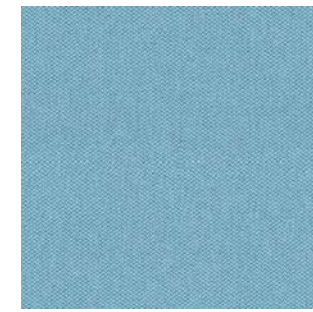
Le fractionnement de la fabrication ne permet pas de garantir une totale similitude des teintes et des structures. De légères différences lors de livraisons ultérieures ne constituent pas un motif de remplacement.



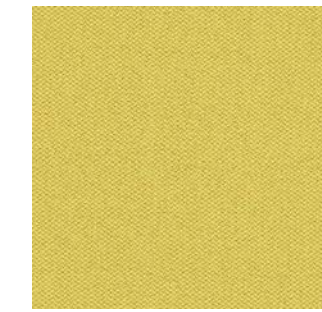
0401 Futurist CSE01



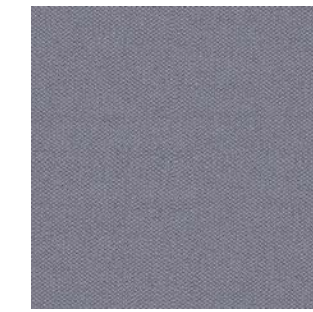
0410 Calendar CSE19



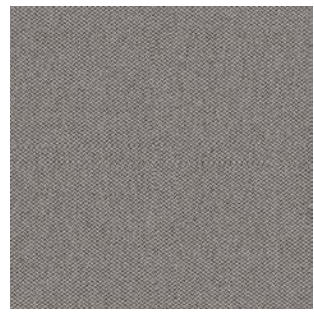
0402 Aeon CSE20



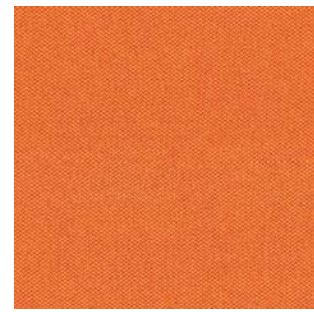
0408 Lifetime CSE03



0415 Forecast CSE11



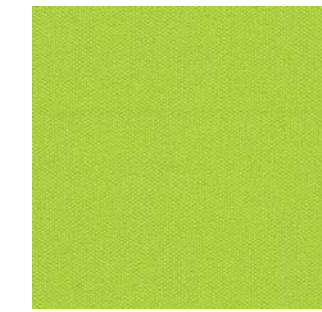
0407 Generation CSE02



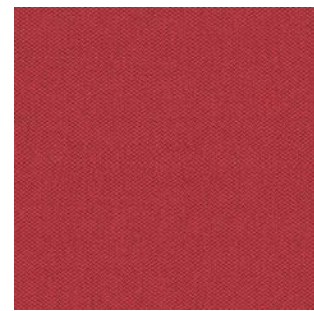
0412 Span CSE05



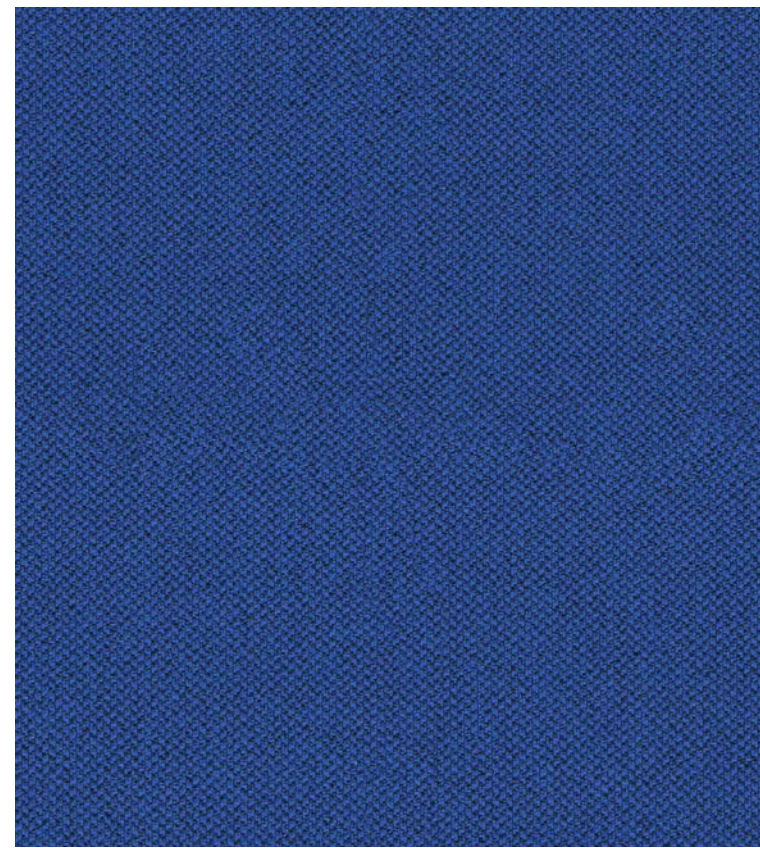
0414 Chapter CSE08



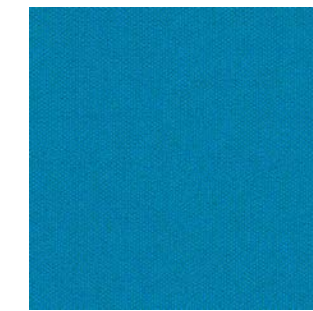
0409 Period CSE07



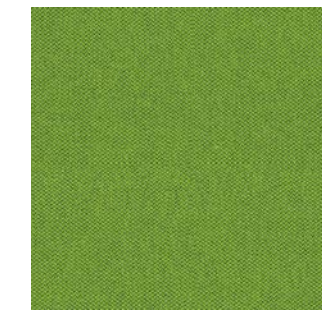
0411 Cycle CSE06



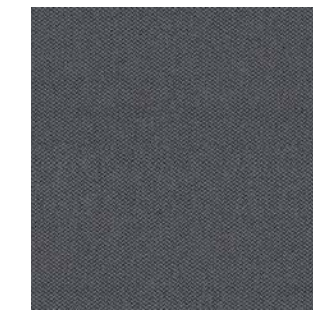
0427 Perennial CSE12



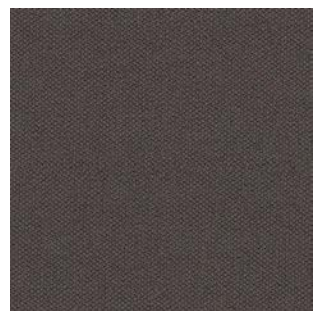
0419 Everlasting CSE10



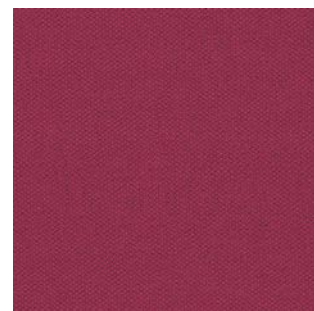
0413 Timelapse CSE16



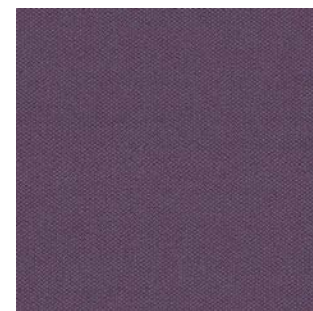
0420 Present CSE13



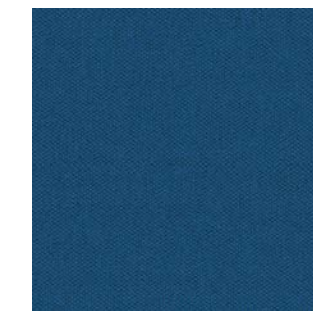
0422 History CSE21



0417 Phase CSE17



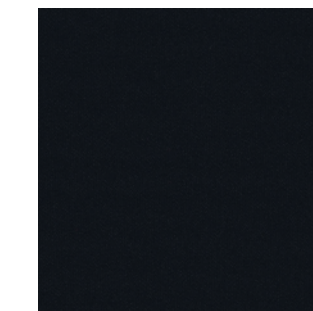
0423 Prime CSE09



0426 Stage CSE15



0425 Event CSE18



0431 Forward CSE14