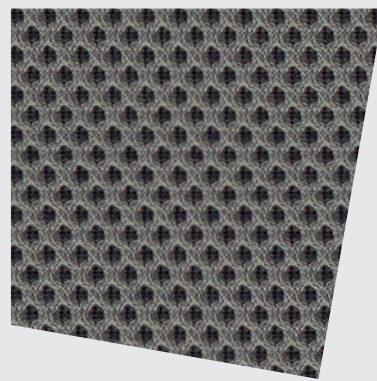
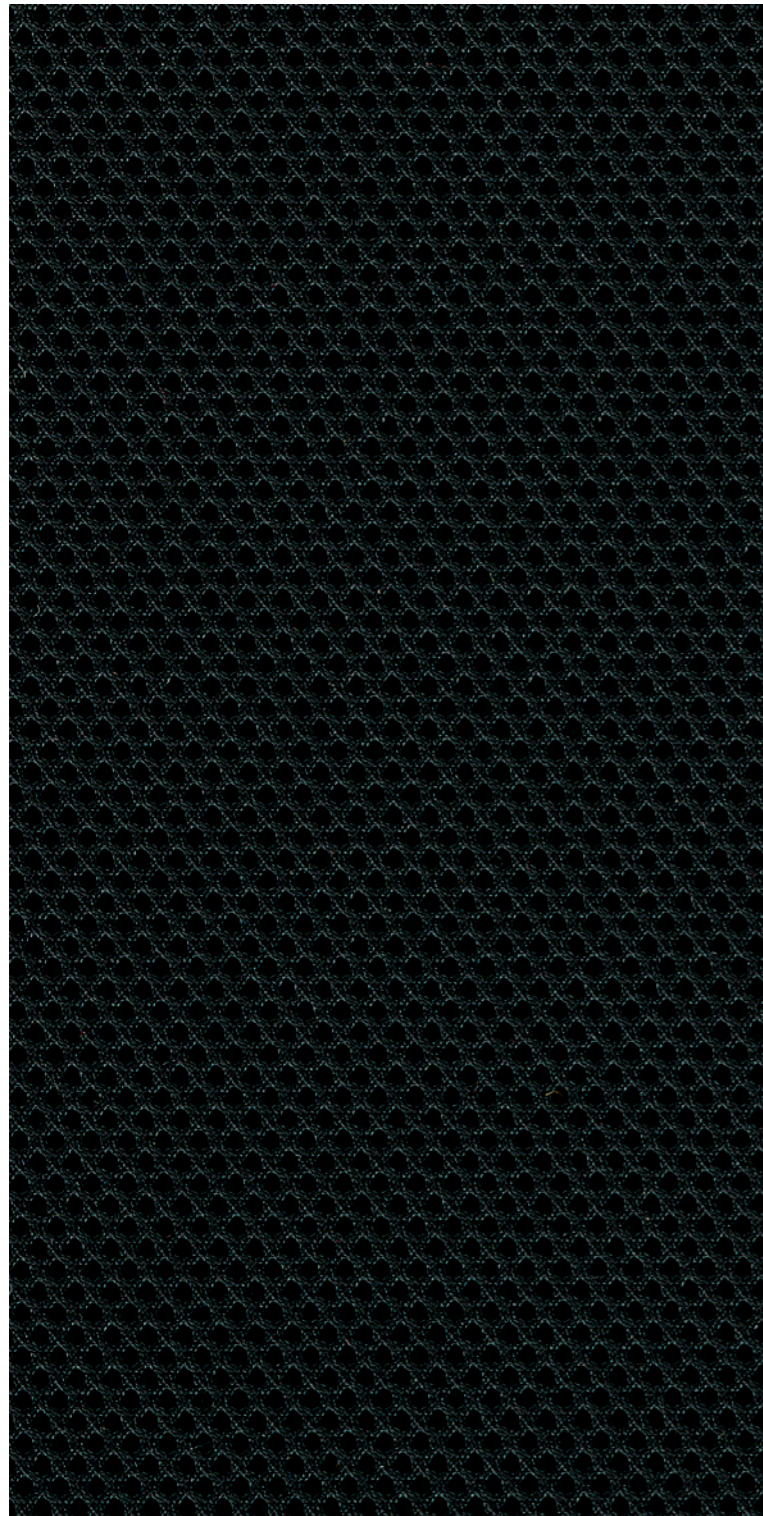


ECONOMY

16

Stoffe Sitzmöbel
Fabrics Seating
Tissus Sièges
Stoffen Zitmeubilair





Runner, Gabriel
100 % Polyester

Breite 160 cm, Längengewicht ca. 510 g/lf. M.
 Scheuerfestigkeit über 70.000 Scheuertouren
 nach Martindale
 Brandverhalten getestet nach DIN EN 1021,
 Teil 1 und 2
 Schadstofffrei nach Öko-Tex Standard 100
 100 % Schwermetallfrei

Runner, Gabriel
100 % polyester

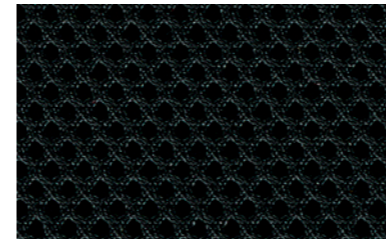
160 cm wide, approx. weight 510 g/lm
 Wear resistance tested to over 70.000 rub cycles
 on the Martindale test
 Flammability tested to DIN EN 1021, parts 1 and 2
 Free of harmful substances in acc. with Oeko-Tex
 Standard 100
 100 % free of heavy metals

Runner, Gabriel
100 % polyester

Largeur : 160 cm, poids au mètre : environ 510 g/ml
 Résistance à l'usure :
 plus de 70.000 tours Martindale
 Comportement au feu testé selon la norme
 DIN EN 1021, parties 1 et 2.
 Exempt de substances toxiques selon le label
 « Öko-Tex Standard 100 ».
 100 % exempt de métaux lourds

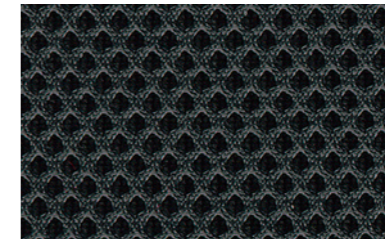
Runner, Gabriel
100 % polyester

Breedte 160 cm, gewicht per
 strekkende meter ca. 510 g
 Slijtvastheid 70.000 toeren Martindale
 Brandgedrag getest volgens DIN EN 1021,
 deel 1 en 2
 Vrij van schadelijke stoffen conform
 Eco-Tex standaard 100
 100 % vrij van zware metalen



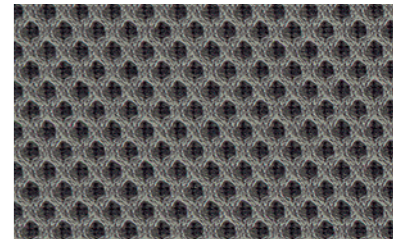
62

schwarz / black / noir / zwart



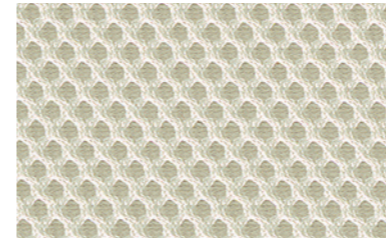
91

anthrazit / anthracite / anthracite /
 antraciet



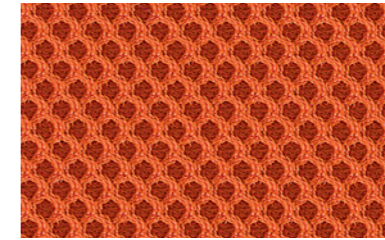
53

grau / grey / gris / grijs



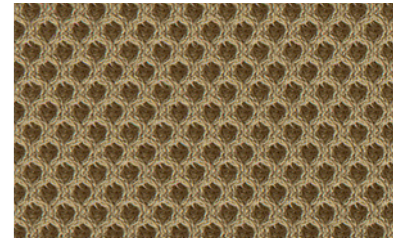
64

weiß / white / blanc / wit



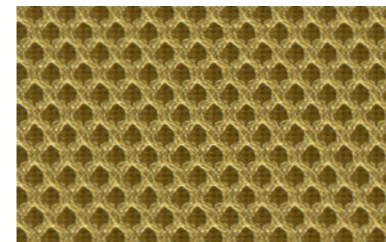
82

orange / orange / orange / oranje



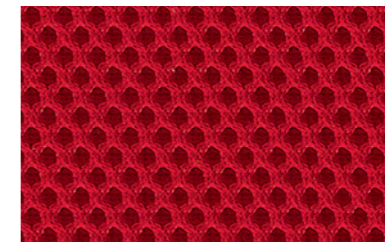
25

beige / beige / beige / beige



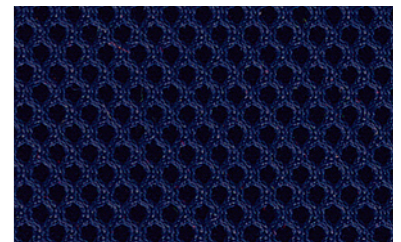
70

ocker / ochre / ocre / oker



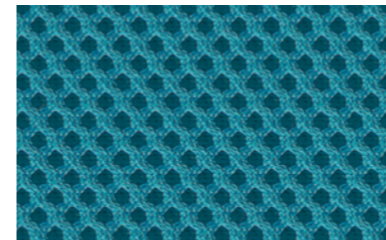
61

rot / red / rouge / rood



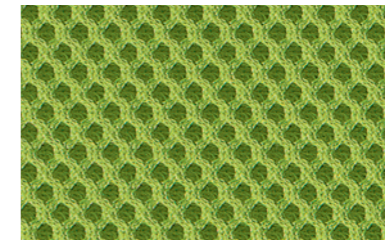
42

dunkelblau / dark blue / bleu foncé /
 donkerblauw



43

hellblau / light blue / bleu clair /
 lichtblauw



34

apfelgrün / apple green /
 vert pomme / appelgroen

LEDER L3

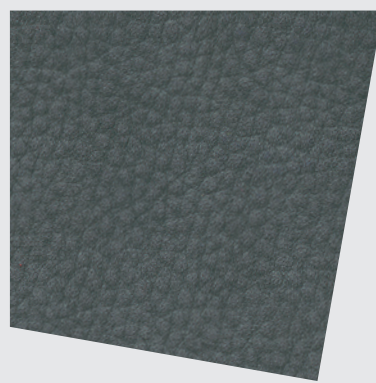
53

Leder Sitzmöbel
(K+N BALANCE.CHAIR)

Leather Seating
(K+N BALANCE.CHAIR)

Cuir Sièges
(K+N BALANCE.CHAIR)

Leder Zitmeubilair
(K+N BALANCE.CHAIR)





**Kairos, gruppo mastrotto
Nubuk**

Europäisches Rindsleder,
Reinanilin Nubuk mit natürlicher Walknarbe
Stärke 1,2 - 1,4 mm
Pflegeleicht, hohe Strapazierfähigkeit
Brandverhalten getestet nach DIN EN 1021,
Teil 1 und 2

**Kairos, gruppo mastrotto
nubuck**

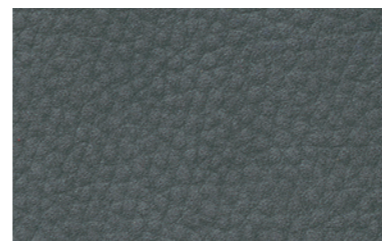
European cowhide,
full aniline nubuck with natural grain
Thickness 1.2 - 1.4 mm
Easy-care, hardwearing
Flammability tested to DIN EN 1021,
part 1 and 2

**Kairos, gruppo mastrotto
Nubuk**

Cuir de bovin d'Europe,
nubuck pure aniline avec grains de foulage
naturels
Épaisseur 1,2 - 1,4 mm
Facile d'entretien, résistance élevée
Comportement au feu testé selon DIN EN 1021,
parties 1 et 2

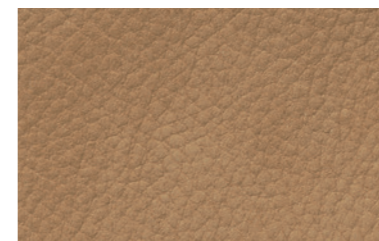
**Kairos, gruppo mastrotto
nubuckleer**

Europees rundleder,
puur aniline nubuckleer met natuurlijke nerven
Dikte 1,2 - 1,4 mm
Makkelijk in onderhoud, onverslijtbaar
Gestest op brandwerendheid
volgens DIN EN 1021,
deel 1 en 2



VLG

grau / grey / gris / grijs



VLH

hellbraun / light brown / brun clair /
lichtbruin

