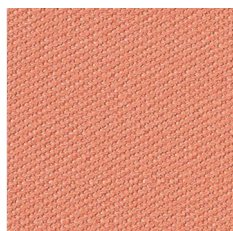
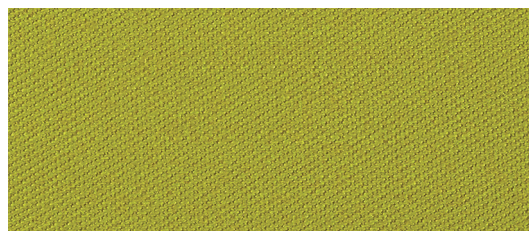


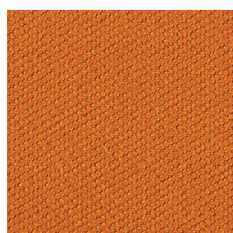
EA918



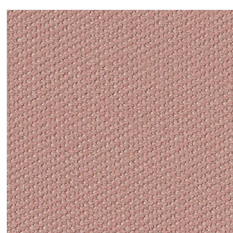
EA124



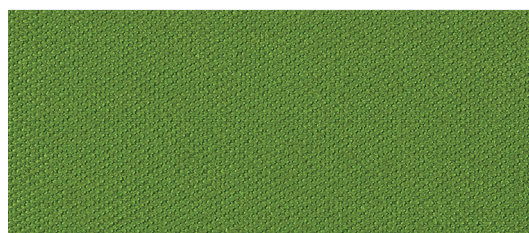
EA636



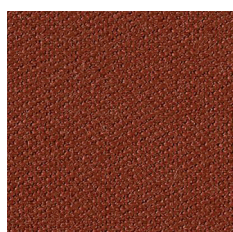
EA027



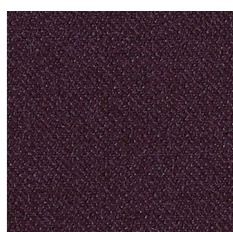
EA622



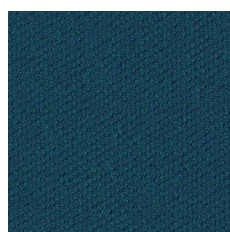
EA036



EA145



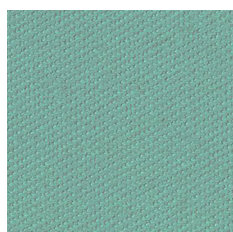
EA772



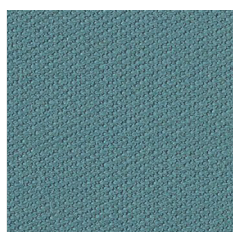
EA454



EA863



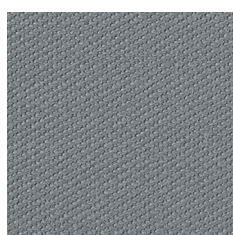
EA831



EA642



EA900



EA200



EA380

pl:

Skład

85% wełna, 15% poliamid

Waga

330 g/m² ± 5%

Szerokość rolki

140 cm

Odporność na ścieranie

150 000 cykli Martindale'a
(BS EN ISO 12947-2:2017)

Pilling

3-4 (EN ISO 12945-2:2000)

Odporność na światło

5 (BS EN ISO 105:B02:2014)

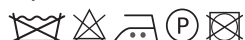
Odporność koloru na tarcie

Mokre: 3-4 (EN ISO 105-X12:2016)
Suche: 4 (EN ISO 105-X12:2016)

Certyfikaty trudnopalności

- EN ISO 1021 part 1&2:2014
- BS 5852:2006 crib 5
- IMO:2010 FTP code annex 1 part 8

Czyszczenie



Dopuszcza się występowanie różnic odcieni pomiędzy poszczególnymi partiami produkcyjnymi.

de:

Zusammensetzung

85% Schurwolle, 15% Polyamid

Gewicht

330 g/m² ± 5%

Rollenbreite

140 cm

Scheuerfestigkeit

150 000 Zyklen Martindale
(BS EN ISO 12947-2:2017)

Pilling

3-4 (EN ISO 12945-2:2000)

Lichtechtheit

5 (BS EN ISO 105:B02:2014)

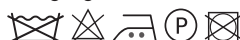
Reibechtheit

Nass: 3-4 (EN ISO 105-X12:2016)
Trocken: 4 (EN ISO 105-X12:2016)

Feuersicherung

- EN ISO 1021 part 1&2:2014
- BS 5852:2006 crib 5
- IMO:2010 FTP code annex 1 part 8

Reinigung



Farbtonunterschiede zwischen einzelnen Produktionschargen sind zulässig.

en:

Composition

85% wool, 15% polyamide

Weight

330 g/m² ± 5%

Roll width

140 cm

Abrasion resistance

150 000 Martindale cycles
(BS EN ISO 12947-2:2017)

Pilling

3-4 (EN ISO 12945-2:2000)

Light fastness

5 (BS EN ISO 105:B02:2014)

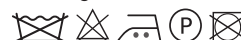
Fastness to rubbing

Wet: 3-4 (EN ISO 105-X12:2016)
Dry: 4 (EN ISO 105-X12:2016)

Flammability

- EN ISO 1021 part 1&2:2014
- BS 5852:2006 crib 5
- IMO:2010 FTP code annex 1 part 8

Cleaning



Shade differences between individual production batches are allowed.