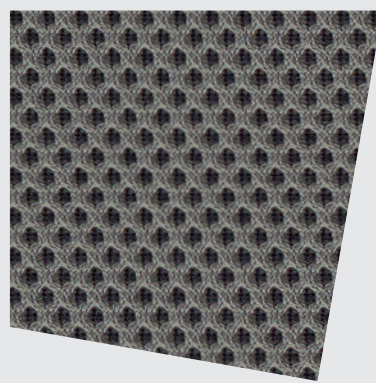
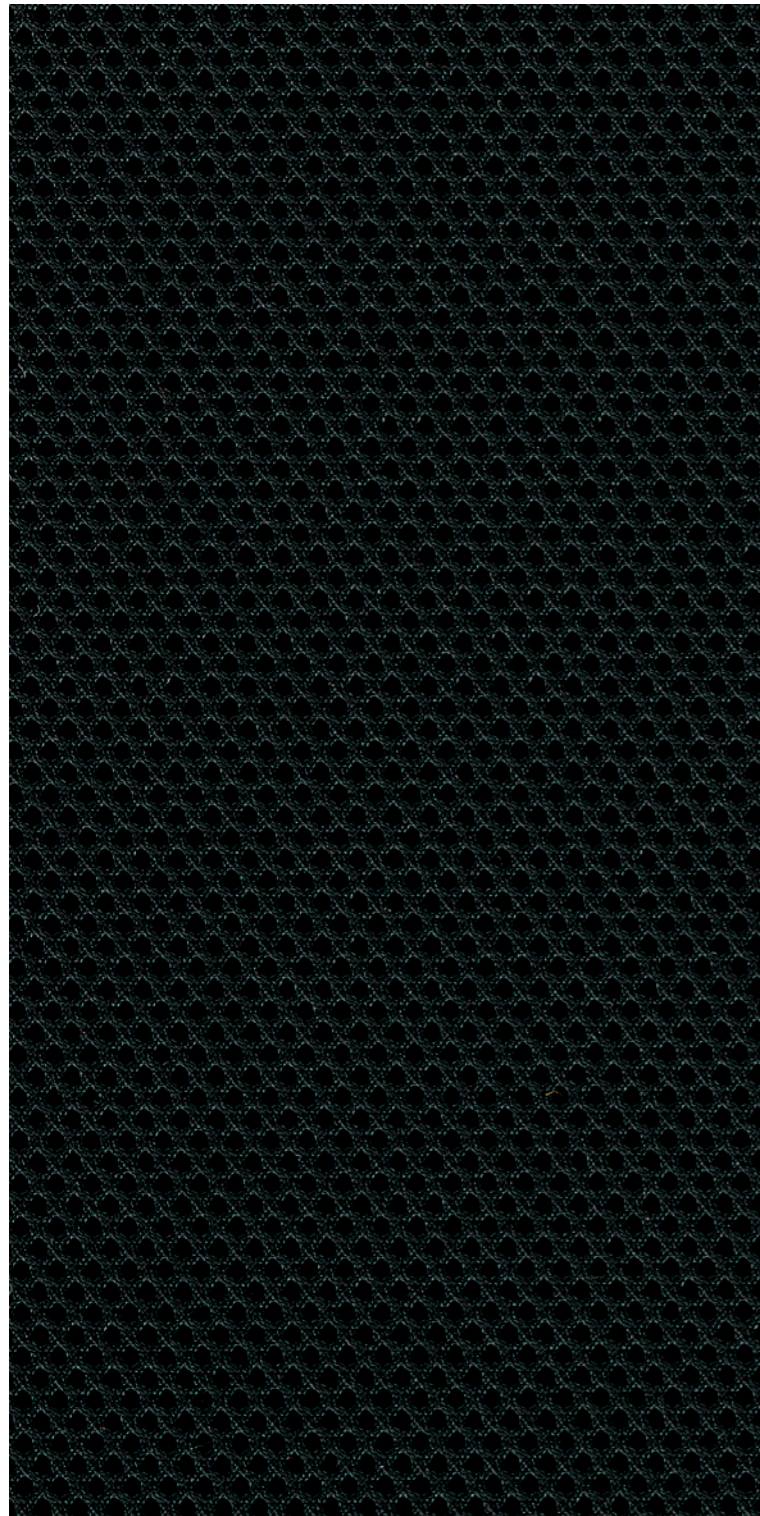


# ECONOMY

# 16

**Stoffe** Sitzmöbel  
**Fabrics** Seating  
**Tissus** Sièges  
**Stoffen** Zitmeubilair





**Runner, Gabriel**  
**100 % Polyester**

Breite 160 cm, Längengewicht ca. 510 g/lf. M.  
Scheuerfestigkeit über 70.000 Scheuertouren  
nach Martindale  
Brandverhalten getestet nach DIN EN 1021,  
Teil 1 und 2  
Schadstofffrei nach Öko-Tex Standard 100  
100 % Schwermetallfrei

**Runner, Gabriel**  
**100 % polyester**

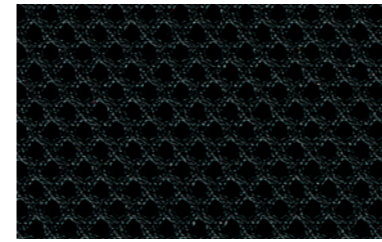
160 cm wide, approx. weight 510 g/lm  
Wear resistance tested to over 70.000 rub cycles  
on the Martindale test  
Flammability tested to DIN EN 1021, parts 1 and 2  
Free of harmful substances in acc. with Oeko-Tex  
Standard 100  
100 % free of heavy metals

**Runner, Gabriel**  
**100 % polyester**

Largeur : 160 cm, poids au mètre : environ 510 g/ml  
Résistance à l'usure :  
plus de 70.000 tours Martindale  
Comportement au feu testé selon la norme  
DIN EN 1021, parties 1 et 2.  
Exempt de substances toxiques selon le label  
« Öko-Tex Standard 100 ».  
100 % exempt de métaux lourds

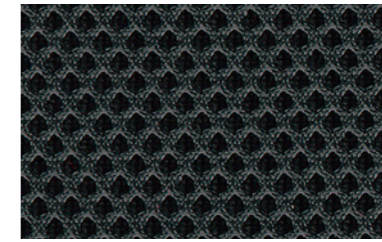
**Runner, Gabriel**  
**100 % polyester**

Breedte 160 cm, gewicht per  
streckende meter ca. 510 g  
Slijtvastheid 70.000 toeren Martindale  
Brandgedrag getest volgens DIN EN 1021,  
deel 1 en 2  
Vrij van schadelijke stoffen conform  
Eco-Tex standaard 100  
100 % vrij van zware metalen



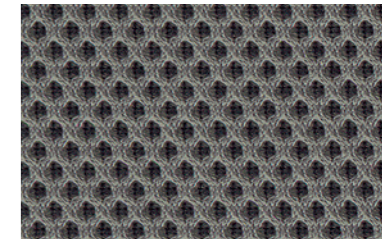
62

schwarz / black / noir / zwart



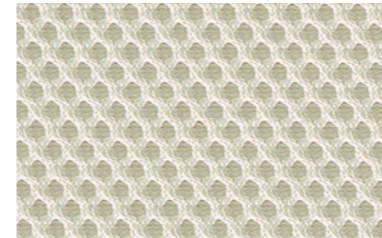
91

anthrazit / anthracite / anthracite /  
antraciet



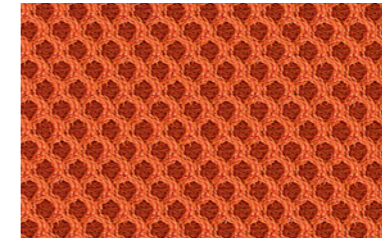
53

grau / grey / gris / grijs



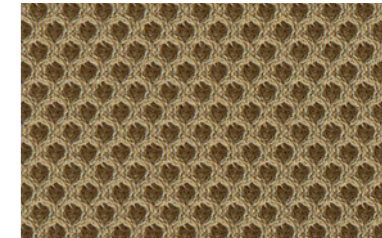
64

weiß / white / blanc / wit



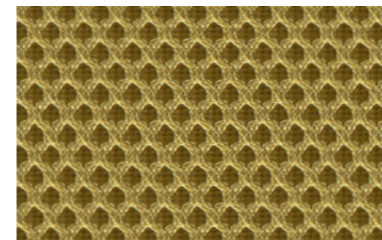
82

orange / orange / orange / oranje



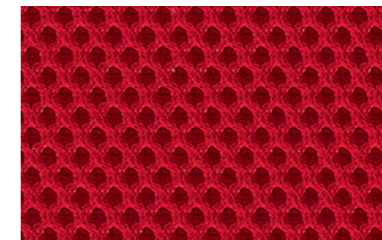
25

beige / beige / beige / beige



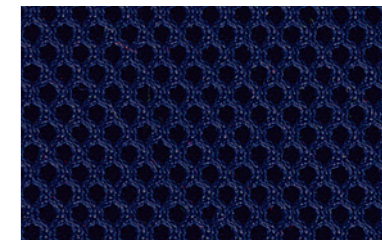
70

ocker / ochre / ocre / oker



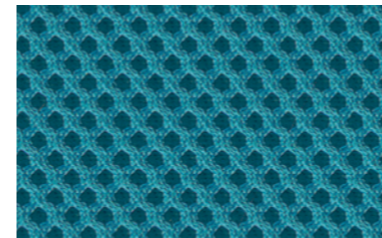
61

rot / red / rouge / rood



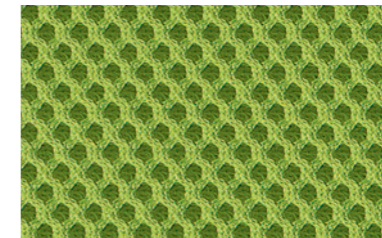
42

dunkelblau / dark blue / bleu foncé /  
donkerblauw



43

hellblau / light blue / bleu clair /  
lichtblauw



34

apfelgrün / apple green /  
vert pomme / appelgroen

# ECONOMY

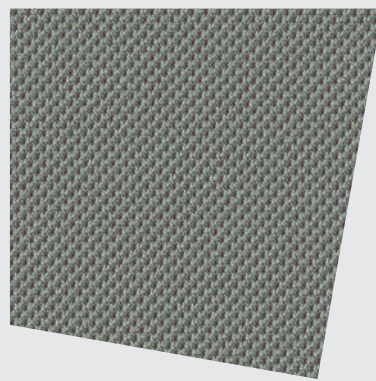
## 14

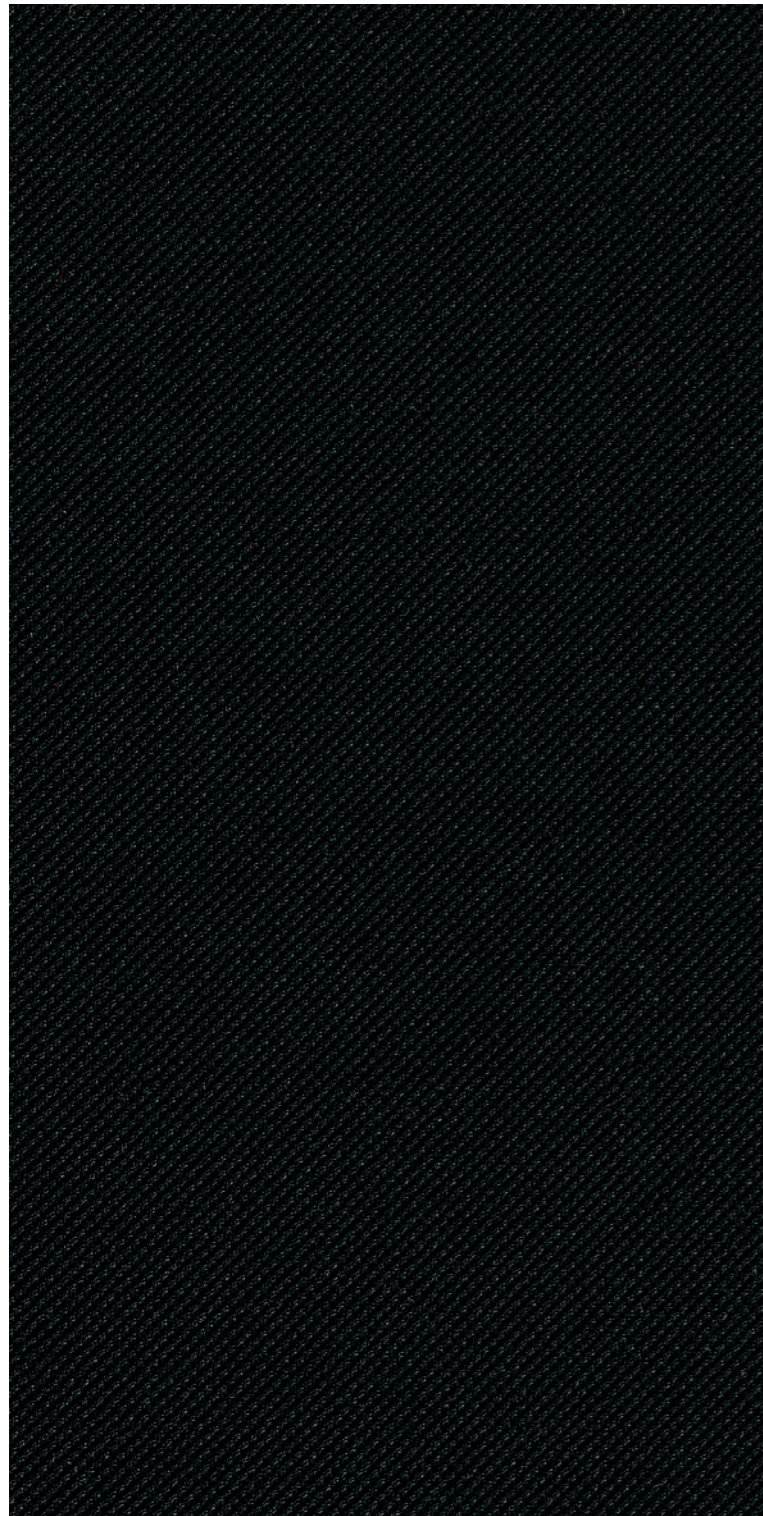
**Stoffe** Sitzmöbel, Raumsysteme und modulare Loungesysteme

**Fabrics** Seating, room systems and modular lounge systems

**Tissus** Sièges, cloisons toutes portantes et systèmes lounge modulaires

**Stoffen** Zitmeubilair, wandsystemen en modulaire loungesystemen





**Atlantic, Gabriel  
100 % Polyester**

Breite 150 cm, Längengewicht ca. 530 g/dfd. M.  
Scheuerfestigkeit über 110.000 Scheuertouren  
nach Martindale  
Brandverhalten getestet nach DIN EN 1021,  
Teil 1 und 2  
EU Ecolabel  
Schadstofffrei nach Öko-Text Standard 100  
100% Schwermetallfrei

**Zur Kombination mit Raumgliederungs-  
elementen empfehlen wir die Stoffgruppe 82.**

**Atlantic, Gabriel  
100 % polyester**

150 cm wide, approx. weight 530 g/lm  
Wear resistance tested to over 110.000 rub  
cycles on the Martindale test  
Flammability tested to DIN EN 1021,  
parts 1 and 2  
EU Ecolabel  
Free of harmful substances in acc. with  
Oeko-Text Standard 100  
100% free of heavy metals

**For combination with screens, we recommend  
the use of fabric group 82.**

**Atlantic, Gabriel  
100 % polyester**

Largeur : 150 cm, poids au mètre :  
environ 530 g / ml  
Résistance à l'usure : plus de 110.000 tours  
Martindale  
Comportement au feu testé selon la  
norme DIN EN 1021, parties 1 et 2  
écolabel UE  
Exempt de substances toxiques selon le  
label « Öko-Text Standard 100 »  
100 % exempt de métaux lourds

**Nous recommandons le groupe de tissus 82  
pour combiner avec les cloisons modulaires.**

**Atlantic, Gabriel  
100 % polyester**

Breedte 150 cm, gewicht per  
streckende meter ca. 530 g  
Slijtvastheid 110.000 toeren Martindale  
Brandgedrag getest volgens DIN EN 1021,  
deel 1 en 2  
voldoet aan het Europees ecolabel  
Vrij van schadelijke stoffen conform  
Eco-Text standaard 100  
100% vrij van zware metalen

**Voor de combinatie met scheidingswanden  
raden wij stofgroep 82 aan.**



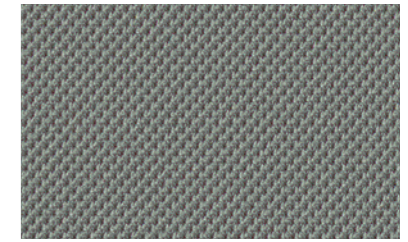
62

schwarz / black / noir / zwart



91

anthrazit / anthracite / anthracite /  
antraciet



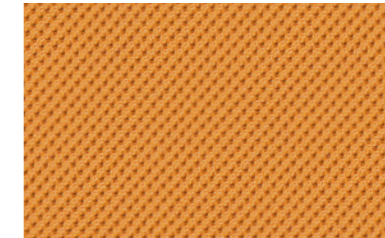
53

grau / grey / gris / grijs



82

orange / orange / orange / oranje



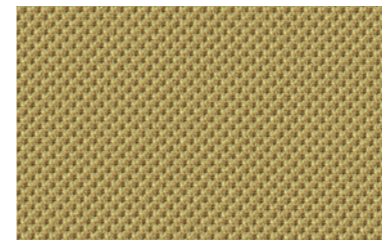
71

gelb / yellow / jaune / geel



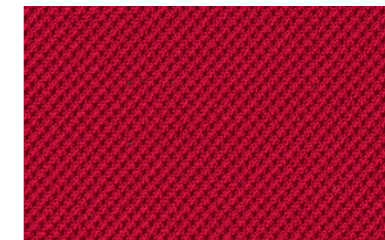
25

beige / beige / beige / beige



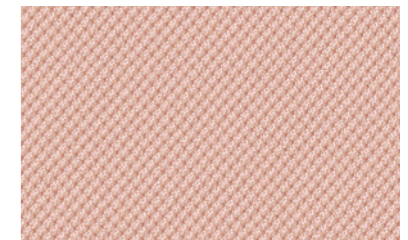
70

ocker / ochre / ocre / oker



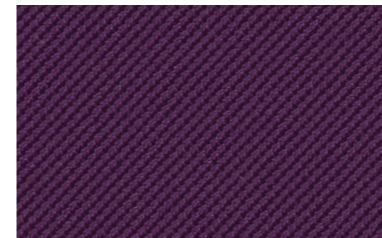
61

rot / red / rouge / rood



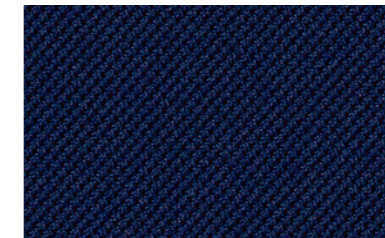
85

rosé / rose / rosé / roze



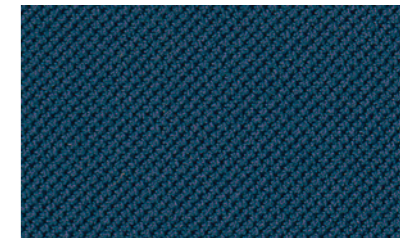
67

brombeer / blackberry / mûre /  
bramen



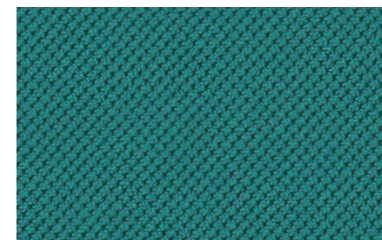
42

dunkelblau / dark blue /  
bleu foncé / donkerblauw



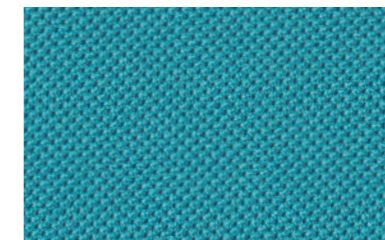
47

petrolblau / petrol blue /  
bleu pétrole / petrolblauw



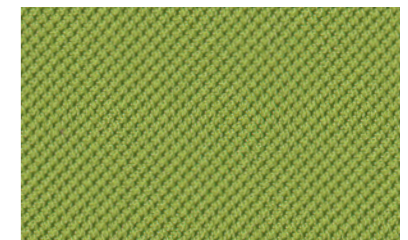
30

seegrün / sea green /  
vert d'eau / zeegroen



43

hellblau / light blue / bleu clair /  
lichtblauw



34

apfelgrün / apple green /  
vert pomme / applegroen

# COMFORT

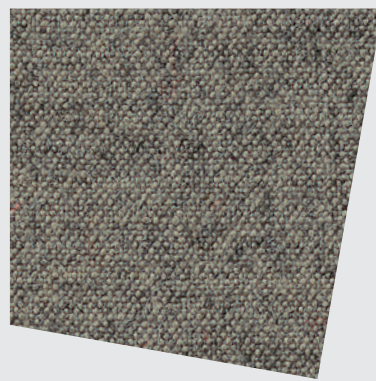
## 39

**Stoffe** Sitzmöbel, Raumsysteme  
und modulare Loungesysteme

**Fabrics** Seating, room systems  
and modular lounge systems

**Tissus** Sièges, cloisons toutes  
portantes et systèmes lounge  
modulaires

**Stoffen** Zitmeubilair, wandsysteemen  
en modulaire loungesystemen





**Melange Nap, Kvadrat  
90 % Wolle, 10 % Nylon**

Breite ca. 140 cm, Längengewicht ca. 440 g/lfd. M.  
Scheuerfestigkeit über 60.000 Scheuertouren  
nach Martindale  
Brandverhalten getestet nach DIN EN 1021,  
Teil 1 und 2  
Schadstofffrei: Entspricht den Vorschriften  
nach REACH

**Melange Nap, Kvadrat  
90 % wool, 10 % nylon**

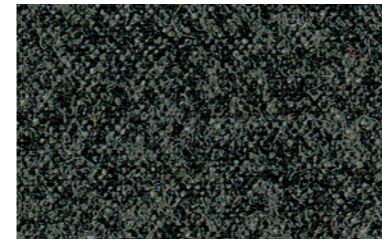
Approx. 140 cm wide, approx. weight 440 g/lm  
Wear resistance tested to over 60.000 rub rub  
cycles on the Martindale test  
Flammability tested to DIN EN 1021,  
parts 1 and 2  
Free of harmful substances: complies with  
REACH regulations

**Melange Nap, Kvadrat  
90 % laine vierge, 10 % nylon**

Largeur : environ 140 cm, poids au mètre :  
environ 440 g / ml  
Résistance à l'usure : plus de 60.000 tours  
Martindale  
Comportement au feu testé selon la  
norme DIN EN 1021, parties 1 et 2  
Exempt de substances toxiques :  
Satisfait aux prescriptions REACH

**Melange Nap, Kvadrat  
90 % wol, 10 % nylon**

Breedte ca. 140 cm, gewicht per  
streckende meter ca. 440 g  
Slijtvastheid 60.000 toeren Martindale  
Brandgedrag getest volgens DIN EN 1021,  
deel 1 en 2  
Vrij van schadelijke stoffen: Voldoet aan  
de REACH-voorschriften



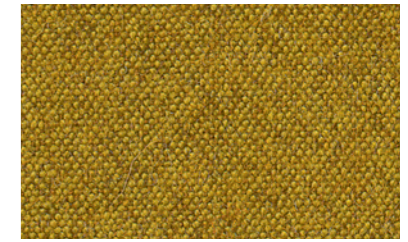
91

anthrazit / anthracite / anthracite /  
antraciet



57

grau / grey / gris / grijs



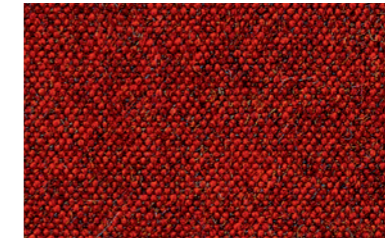
70

ocker / ochre / ocre / oker



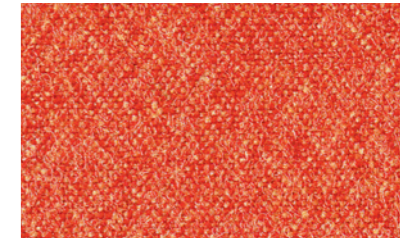
25

beige / beige / beige / beige



60

rot / red / rouge / rood



82

orange / orange / orange / oranje



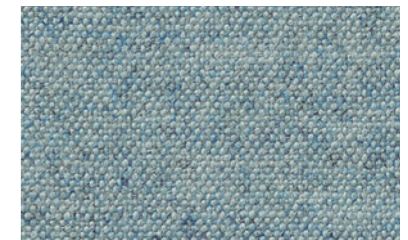
41

mittelblau / medium blue /  
bleu moyen / middelblauw



42

dunkelblau / dark blue /  
bleu foncé / donkerblauw



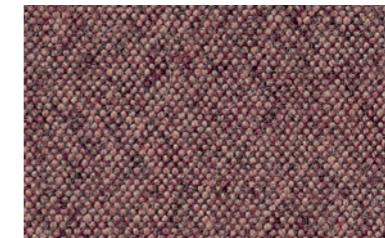
43

hellblau / light blue / bleu clair /  
lichtblauw



68

pflaume / plum / prune / pruim



67

brombeer / blackberry / mûre /  
bramen

