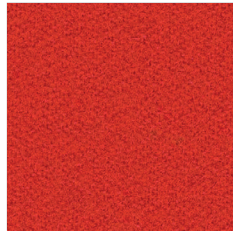
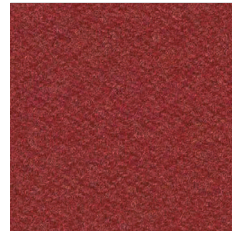


LDS81



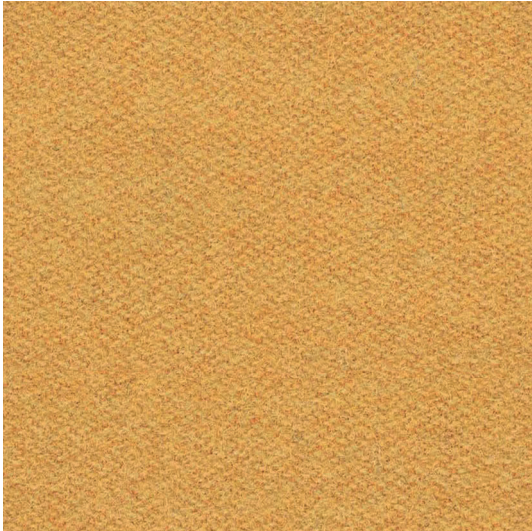
LDS80



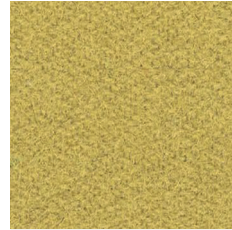
LDS85



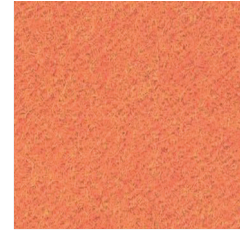
LDS86



LDS44



LDS28



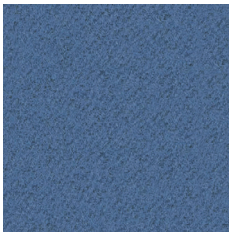
LDS82



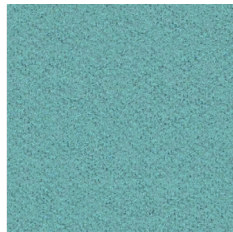
LDS46



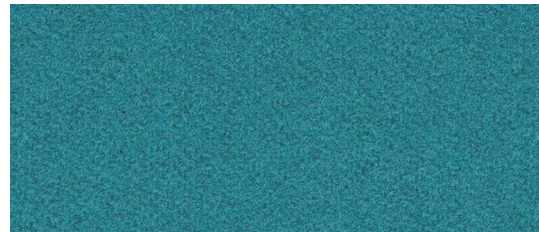
LDS47



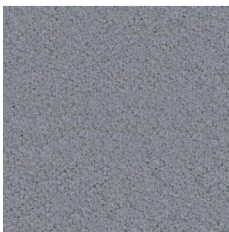
LDS63



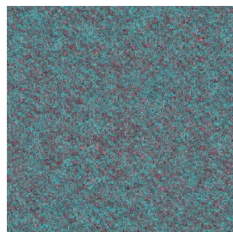
LDS55



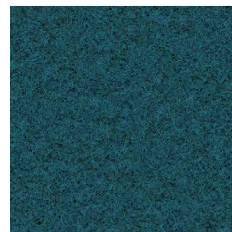
LDS57



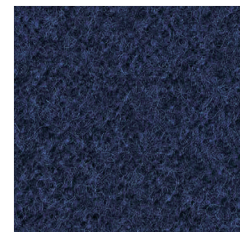
LDS21



LDS56



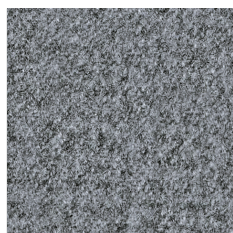
LDS59



LDS62



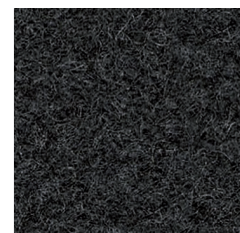
LDS08



LDS16



LDS35



LDS17

pl:

Skład

95% wełna, 5% poliamid

Waga

400 g/m² ± 5%

Szerokość rolki

140 cm

Odporność na ścieranie

100 000 cykli Martindale'a
(BS EN ISO 12947-2:2016)

Pilling

4 (BS EN ISO 12945-2:2000)

Odporność na światło

5 (BS EN ISO 105-B02:2014-BS6)

Odporność koloru na tarcie

Mokre: 4 (UNI EN ISO 105-X12)
Suche: 4 (UNI EN ISO 105-X12)

Certyfikaty trudnopalności

- BS EN 1021-1:2014
- BS EN 1021-2:2014
- BS 7176 Low Hazard
- UNI 9175:2010 Class 1 IM
- ÖNORM B 3825 & A 3800-1

Czyszczenie

na sucho

Dopuszcza się występowanie różnic odcieni pomiędzy poszczególnymi partiami produkcyjnymi.

de:

Zusammensetzung

95% Schurwolle, 5% Polyamid

Gewicht

400 g/m² ± 5%

Rollenbreite

140 cm

Scheuerfestigkeit

100 000 Zyklen Martindale
(BS EN ISO 12947-2:2016)

Pilling

4 (BS EN ISO 12945-2:2000)

Lichtechtheit

5 (BS EN ISO 105-B02:2014-BS6)

Reibechtheit

Nass: 4 (UNI EN ISO 105-X12)
Trocken: 4 (UNI EN ISO 105-X12)

Feuersicherung

- BS EN 1021-1:2014
- BS EN 1021-2:2014
- BS 7176 Low Hazard
- UNI 9175:2010 Class 1 IM
- ÖNORM B 3825 & A 3800-1

Reinigung

Trockenreinigung

Farbtonunterschiede zwischen einzelnen Produktionschargen sind zulässig.

en:

Composition

95% virgin wool, 5% polyamide

Weight

400 g/m² ± 5%

Roll width

140 cm

Abrasion resistance

100 000 Martindale cycles
(BS EN ISO 12947-2:2016)

Pilling

4 (BS EN ISO 12945-2:2000)

Light fastness

5 (BS EN ISO 105-B02:2014-BS6)

Fastness to rubbing

Wet: 4 (UNI EN ISO 105-X12)
Dry: 4 (UNI EN ISO 105-X12)

Flammability

- BS EN 1021-1:2014
- BS EN 1021-2:2014
- BS 7176 Low Hazard
- UNI 9175:2010 Class 1 IM
- ÖNORM B 3825 & A 3800-1

Cleaning

dry cleaning

Shade differences between individual production batches are allowed.