



Product Specification Sheet

BuzziDome 230v

— By BuzziSpace Studio

Elegant acoustic lighting

Meet BuzziDome, a modern noise-reducing light with a refined semi-dome shape. BuzziDome's concave design, coupled with its acoustic foam element, acts as an excellent diffuser and absorber of sound. Therefore, BuzziDome provides exceptional acoustic treatment for any setting.

A recessed LED light source, accentuates the pendant's meticulous craftsmanship while also emitting a warm, functional light. BuzziDome accommodates the demand for both sound absorption and light, being the perfect fit for workplaces, hospitality settings, and break-out areas. Pick yours from a wide range of colorful upholstery options. It will definitely complement the aesthetic scheme of your interior.



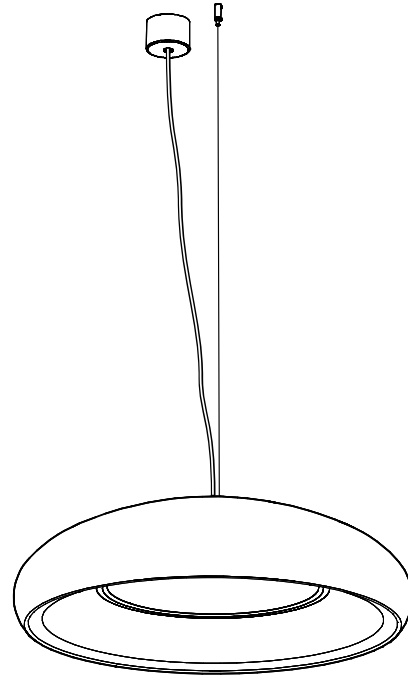
The Family

Model

BuzziDome

Lighting Unit

**LED Disk
Ø 470**



Required order information

1. Fabric (CAT -> Collection -> Color)
2. Mounting Option

Lighting Data

Lighting Unit

LED Disk Ø 470



The PMMA diffuser ensures an optimal light spread and efficiency. It creates a very diffuse light surface without any dottiness.

The light source of the BuzziDome is a LED PCB, containing 36 low power LED's.

On Request: UGR 19

To achieve a UGR 19, the product is fitted with a Prismatic diffuser instead of a milky diffuser. LED dots will be visible.

Lighting specifications

BuzziDome

Lighting Unit	Voltage	Wattage	Light Output Luminaire	Efficacy (Lm/W)	CRI	Dimming	Color Temperature	UGR	Standard (stock) On request (>LT)	Color Power Cable	Color Ceiling Canopy	Fabric Collection	Fabric Color	Mounting Option
LED Disk Ø 470	230V	29W	2545 Lm	88	90	1-10V	3000K	22	Standard	Transparent	White			
LED Disk Ø 470	230V	29W	2545 Lm	88	90	1-10V	3000K	19*	On request	Transparent	White			
LED Disk Ø 470	230V	29W	2545 Lm	88	90	1-10V	4000K	22	On request	Transparent	White	Use color codes below	Use color codes below	1 cable of 2 m or 4 m in black or alu
LED Disk Ø 470	230V	29W	2545 Lm	88	90	DALI	4000K	22	On request	Transparent	White			
LED Disk Ø 470	230V	29W	2545 Lm	88	90	DALI	3000K	22	On request	Transparent	White			

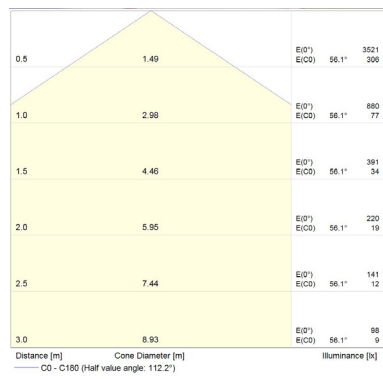
CE CB

* To achieve a UGR 19, the product is fitted with a Prismatic diffusor instead of a milky diffusor. LED dots will be visible.

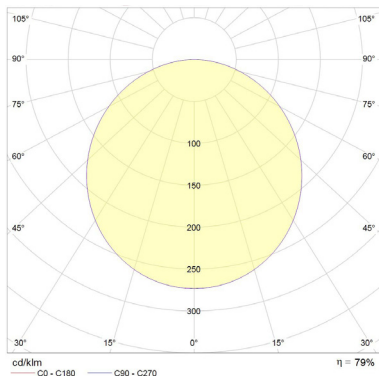
Photometric Data

BuzziDome LED Disk Ø 470

LED Disk Ø 470 Cartesian diagram



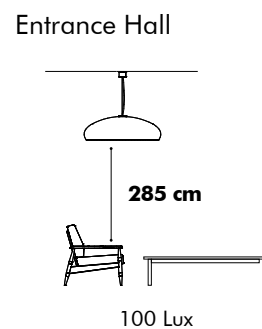
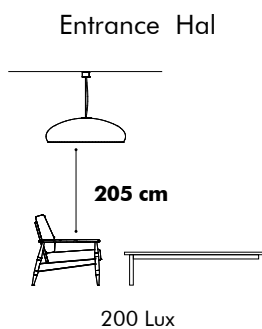
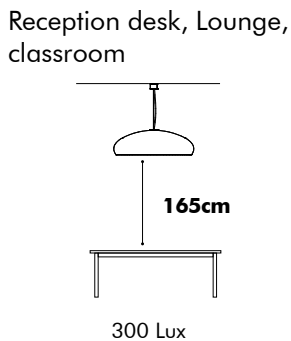
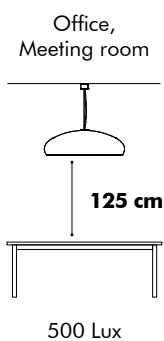
LED Disk Ø 470 Polar curve



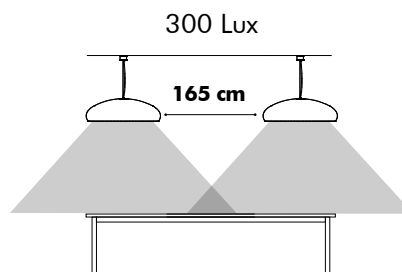
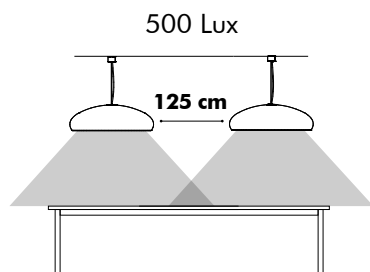
Tips and Tricks - Light Options

To enlight your workplace with optimal lux levels take following measurements into account:

BuzziDome LED Disk Ø 470



To ensure a continuous light spread into account take following distances inbetween the BuzziJets S | M | XL

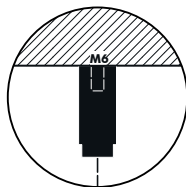
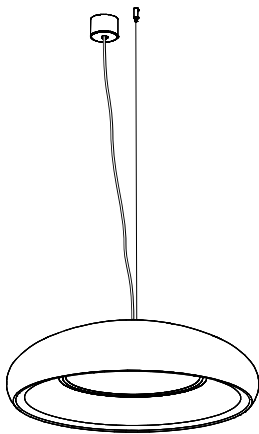


* According to EN12464

Product Data

Fixing System

Fixing System Acoustic Shade



BuzziDome is suspended on 1 cable of 2 or 4 m black or alu colored cables, with fixing system screw.

⚠ If installing on suspended ceiling, verify load capacity prior to installation.

Acoustic Shade



The acoustic shade is upholstered top to bottom in a chosen fabric.

For certain fabrics, color variations may occur across the umbrella-shaped surface.

This is, especially, the case for color rich fabrics where differently colored yarns blend and result in different hues. This combination creates a lively play of irregular colors across the fabric. It's important to note that this isn't a defect or fault, but rather a unique characteristic of such fabrics.

This can occur when following fabrics are selected:
Trevira CS & CS+, Remix 3 and Clara 2.

With a complex double-curved shape, some fabrics will cause the appearance of a waving motion close to the stitch. This typically applies to fabrics with visible yarns across the surface. It's not a defect, but a natural result following from the characteristics of product shape. This can occur when following fabrics are selected:

Trevira CS & CS+, Remix 3, Memory 2 and Clara 2.



Absorption



Diffusion



Low tone



Mid tone

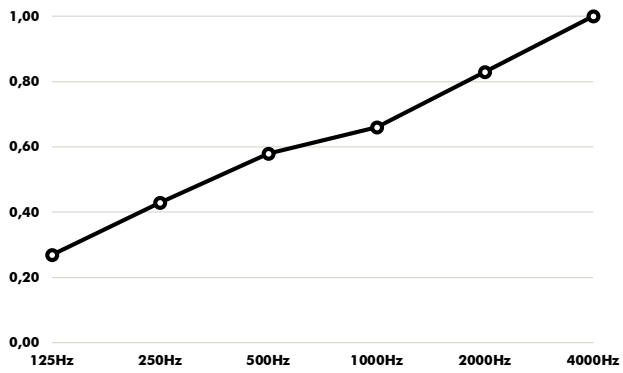


High tone

Acoustics

BuzziDome

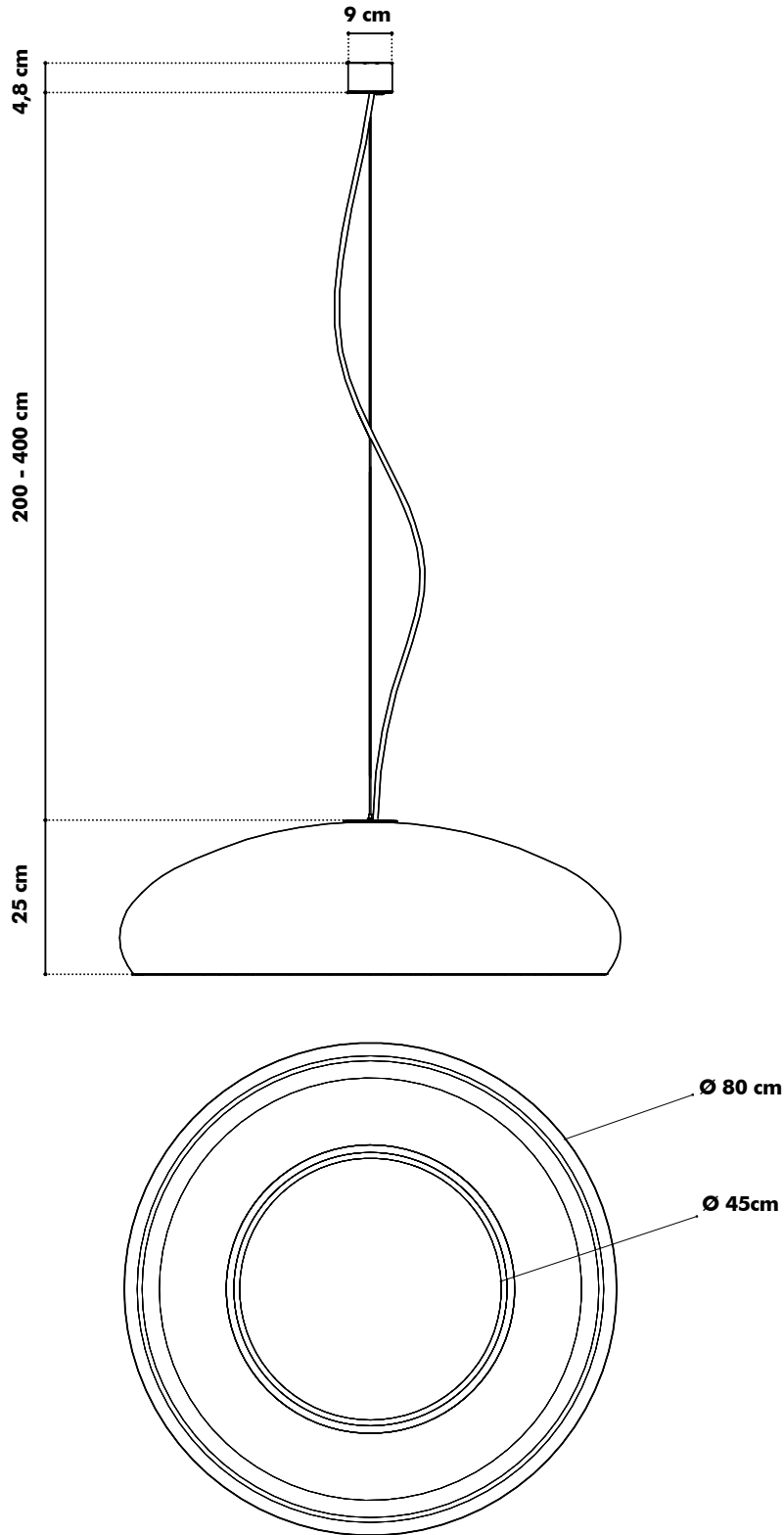
Equivalent sound absorption area in m² per object



Hz	Aeq/m ²
125	0,27
250	0,43
500	0,58
1000	0,66
2000	0,83
4000	1,00

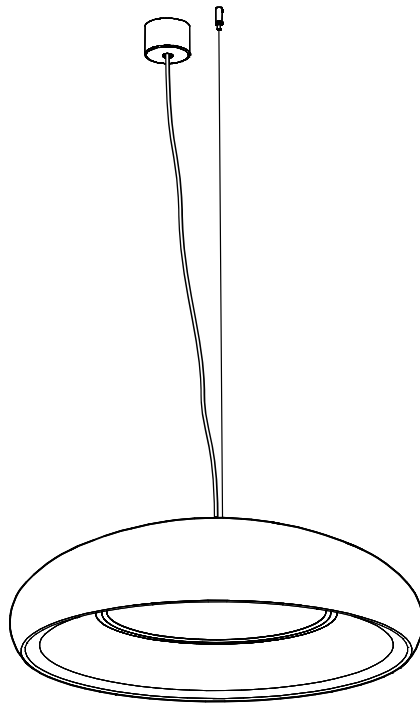
Dimensions


BuzziDome



Weights

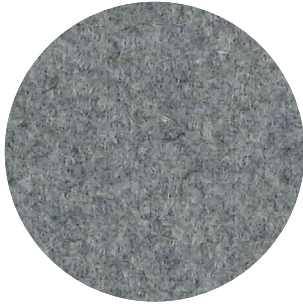
BuzziDome



 13,5 kg

Fabrics

Fabric (45 colors)



Category A

Composition 70% Recycled Wool, 25% Recycled Polyacryl,
5% Recycled Other Fabrics

Weight 405 g/m² | 11.94 oz/yd²

Abrasion resistance 40.000 Martindale, 50,000 Wyzenbeek

Flammability EU: EN 1021.1/2006 | BS EN 1021.1/2006 (cigarette).
EN 1021.2/2006 | BS EN 1021.2/2006 (match)
USA: CAL TB 117 | ASTM E84 CLASS A

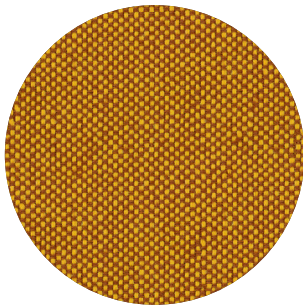
Fastness to light EU: 4 | USA 4

Fastness to rubbing EU: Wet 3-4 | Dry 4-5

Fastness to crocking USA: Wet 5 | Dry 5



Trevira CS+ | CS (47 colors)



Category A

Weight 420 g/m² | 12.39 oz/yd²

Composition 100% Polyester, Trevira CS

Abrasion resistance 100.000 Martindale, 90,000 Wyzenbeek

Flammability BS 5852 part II: CRIB 5 | BS 7176 Medium Hazard
USA: CAL TB 117 | M1 | B1 | EN 1021/1-2 | C1 |
IMO Res. A652 (16)

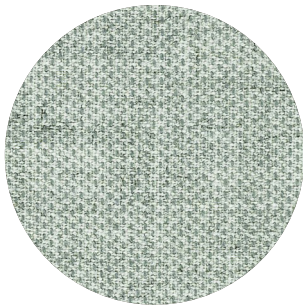
Fastness to light EU: 6 | USA 5

Fastness to rubbing EU: Wet 4-5 | Dry 4-5

Fastness to crocking USA: Wet 5 | Dry 5



Clara 2 (24 colors)



Category B

Composition 92% new wool, 8% nylon

Weight 400 g/lin.m

Abrasion resistance 80.000 Martindale rubs, EN ISO 12947

Flammability EN 1021-1/2 | BS 5852, ignition source 2-3 | DIN 4102 B2
NF D 60 013 | UNI 9175 1IM | US Cal. Tech. Bull. 117, Sec. E
NFPA 260 | IMO A.652(16)

Fastness to light Note 5-7, ISO 105-B02

Fastness to rubbing (ISO) dry 4-5, wet 4

Pilling Note 4, EN ISO 12945



kvadrat

Remix 3 (73 colors)

kvadrat



Category B

Composition 90% new wool, 10% nylon

Weight 415 g/lin.m

Abrasion resistance 100.000 Martindale rubs, EN ISO 12947

Flammability EN 1021-1/2 | BS 5852 part 1

Önorm B1/Q1 | NF D 60 013 | UNI 9175, 11M

AS/NZS 1530.3 | Cal. Tech. Bull. 117-2013

NFPA 260 | IMO FTP Code 2010:Part 8

Fastness to light Note 5-7, ISO 105-B02

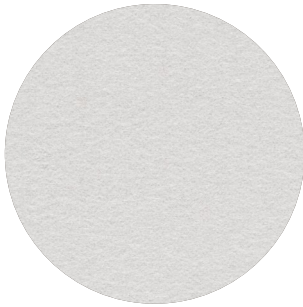
Fastness to rubbing (ISO) dry 4-5, wet 4

Pilling Note 4, EN ISO 12945



Hero 2 (33 colors)

kvadrat



Category C

Composition 97% new wool, 3% nylon

Weight 580 g/lin.m

Abrasion resistance 45.000 Martindale rubs, EN ISO 12947

Flammability EN 1021-1/2 | DIN 4102 B2 | NF D 60 013

UNI 9175 11M | US Cal. Bull. 117-2013 | NFPA 260

IMO A.652 (16)

Fastness to light Note 5-6, ISO 105-B02

Fastness to rubbing (ISO) dry 4-5, wet 4-5

Pilling Note 3-4, EN ISO 12945



Tonus 4 (47 colors)

kvadrat



Category D

Composition 90% new wool, 10% Helanca

Weight 665 g/lin.m

Abrasion resistance 100.000 Martindale rubs, EN ISO 12947

Flammability EN 1021-1/2 | BS 5852 part 1 | DIN 4102 B2

Önorm B1/Q1 | NF D 60 013 | UNI 9175 11M

US Cal. Bull. 117-2013 | NFPA 260 | IMO A.652 (16)

Fastness to light Note 5-7, ISO 105-B02

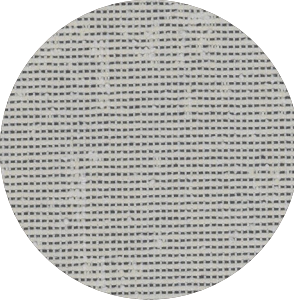
Fastness to rubbing (ISO) dry 3-5, wet 3-5

Pilling Note 3, EN ISO 12945



Memory 2 (20 colors)

kvadrat



Category E

Composition 100% Trevira CS

Weight 700 g/lin.m

Abrasion resistance

35.000 rubs acc. to the Martindale method, EN ISO 12947

Flammability EN 1021-1/2 | DIN 4102 B1 | Önorm B1/Q1
NF D 60 013 | NF P 92 507 M1 | UNI 9175 11M
UNI 9177 classe 1 | US Cal. Tech. Bull. 117
IMO A.652 (16)

Fastness to light Note 5-8, ISO 105-B02

Fastness to rubbing (ISO) dry 4-5, wet 4-5

Pilling Note 4, EN ISO 12945

