

ECONOMY

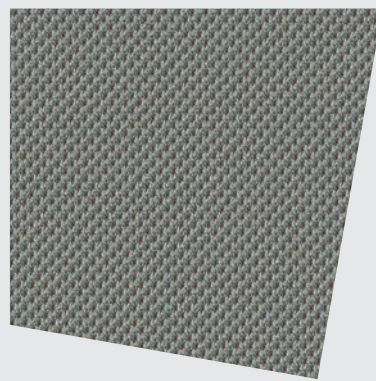
14

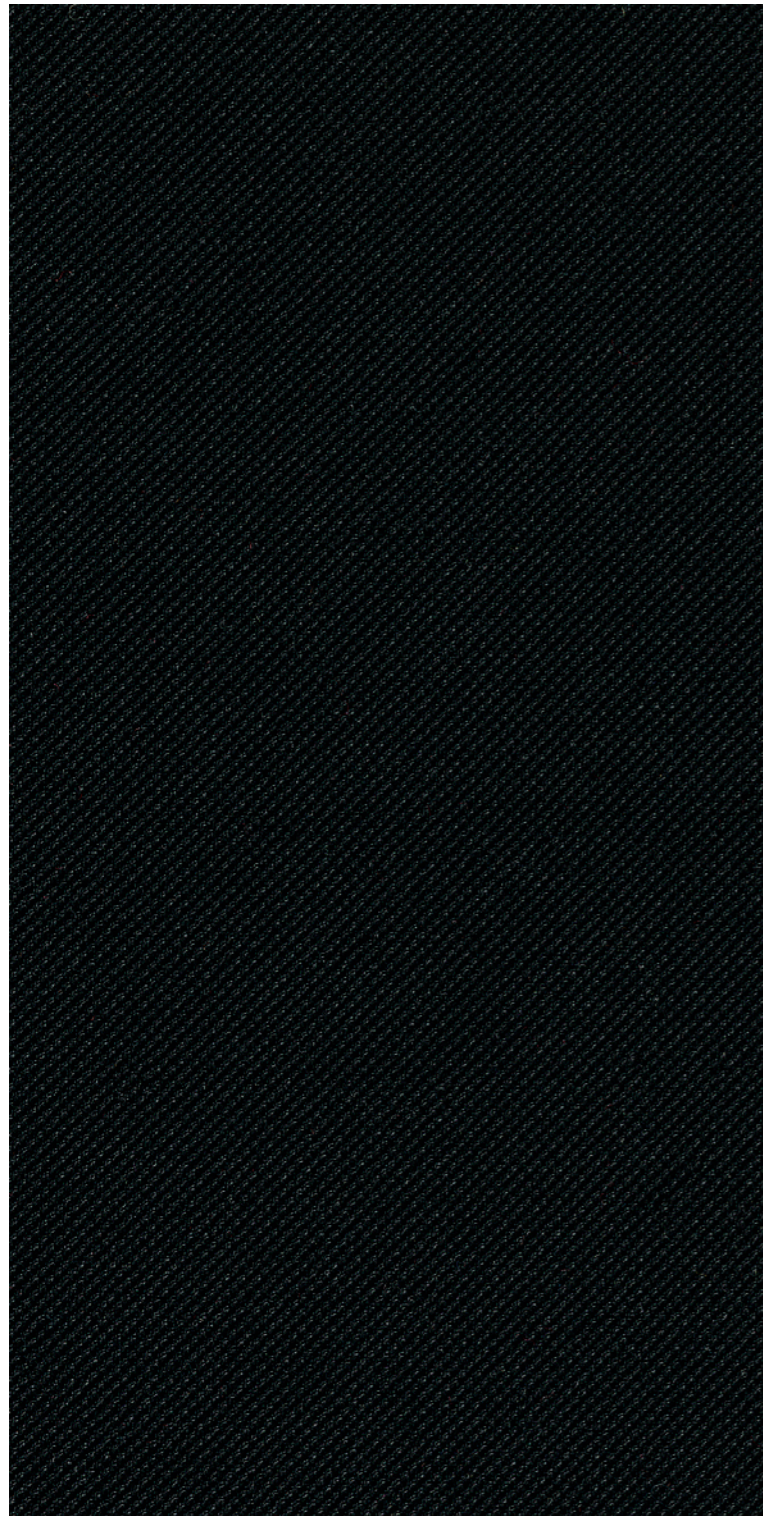
Stoffe Sitzmöbel, Raumsysteme und modulare Loungesysteme

Fabrics Seating, room systems and modular lounge systems

Tissus Sièges, cloisons toutes portantes et systèmes lounge modulaires

Stoffen Zitmeubilair, wandsystemen en modulaire loungesystemen





**Atlantic, Gabriel
100 % Polyester**

Breite 150 cm, Längengewicht ca. 530 g/dfd. M.
Scheuerfestigkeit über 110.000 Scheuertouren
nach Martindale
Brandverhalten getestet nach DIN EN 1021,
Teil 1 und 2
EU Ecolabel
Schadstofffrei nach Öko-Text Standard 100
100% Schwermetallfrei

**Zur Kombination mit Raumgliederungs-
elementen empfehlen wir die Stoffgruppe 82.**

**Atlantic, Gabriel
100 % polyester**

150 cm wide, approx. weight 530 g/lm
Wear resistance tested to over 110.000 rub
cycles on the Martindale test
Flammability tested to DIN EN 1021,
parts 1 and 2
EU Ecolabel
Free of harmful substances in acc. with
Oeko-Text Standard 100
100% free of heavy metals

**For combination with screens, we recommend
the use of fabric group 82.**

**Atlantic, Gabriel
100 % polyester**

Largeur : 150 cm, poids au mètre :
environ 530 g / ml
Résistance à l'usure : plus de 110.000 tours
Martindale
Comportement au feu testé selon la
norme DIN EN 1021, parties 1 et 2
écolabel UE
Exempt de substances toxiques selon le
label « Öko-Text Standard 100 »
100 % exempt de métaux lourds

**Nous recommandons le groupe de tissus 82
pour combiner avec les cloisons modulaires.**

**Atlantic, Gabriel
100 % polyester**

Breedte 150 cm, gewicht per
streckende meter ca. 530 g
Slijtvastheid 110.000 toeren Martindale
Brandgedrag getest volgens DIN EN 1021,
deel 1 en 2
voldoet aan het Europees ecolabel
Vrij van schadelijke stoffen conform
Eco-Text standaard 100
100% vrij van zware metalen

**Voor de combinatie met scheidingswanden
raden wij stofgroep 82 aan.**



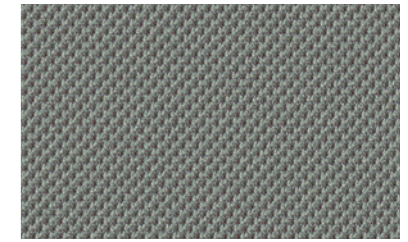
62

schwarz / black / noir / zwart



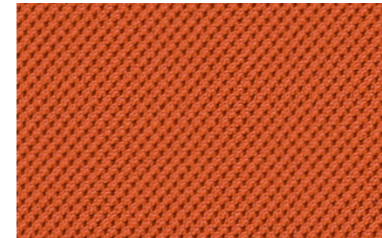
91

anthrazit / anthracite / anthracite /
antraciet



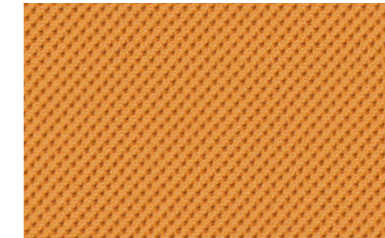
53

grau / grey / gris / grijs



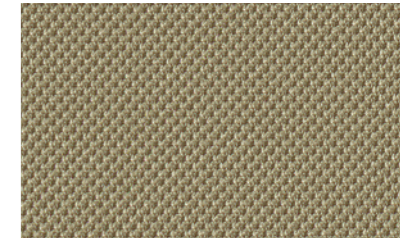
82

orange / orange / orange / oranje



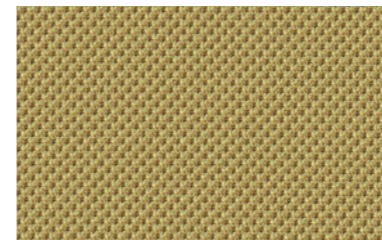
71

gelb / yellow / jaune / geel



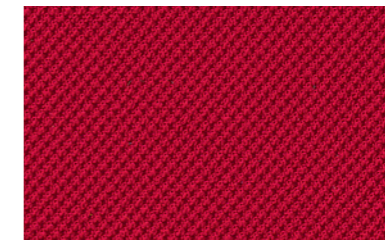
25

beige / beige / beige / beige



70

ocker / ochre / ocre / oker



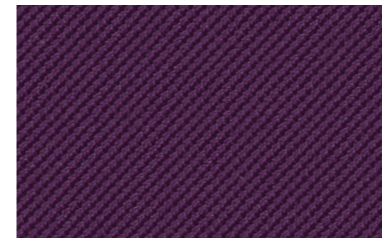
61

rot / red / rouge / rood



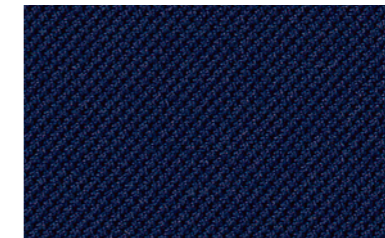
85

rosé / rose / rosé / roze



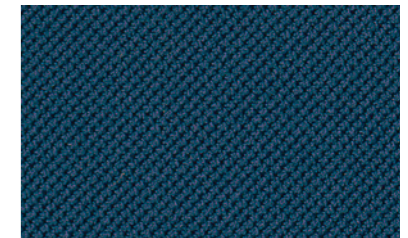
67

brombeer / blackberry / mûre /
bramen



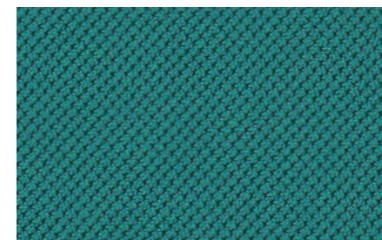
42

dunkelblau / dark blue /
bleu foncé / donkerblauw



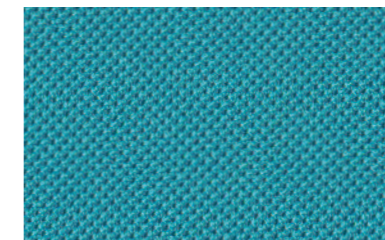
47

petrolblau / petrol blue /
bleu pétrole / petrolblauw



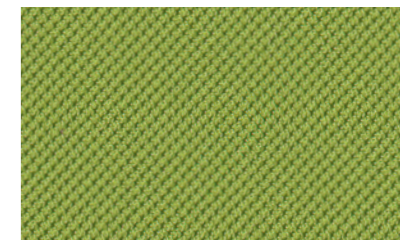
30

seegrün / sea green /
vert d'eau / zeegroen



43

hellblau / light blue / bleu clair /
lichtblauw



34

apfelgrün / apple green /
vert pomme / applegroen

COMFORT

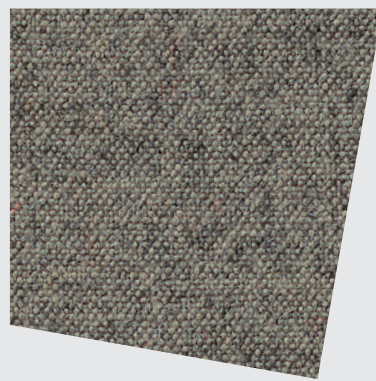
39

Stoffe Sitzmöbel, Raumsysteme und modulare Loungesysteme

Fabrics Seating, room systems and modular lounge systems

Tissus Sièges, cloisons toutes portantes et systèmes lounge modulaires

Stoffen Zitmeubilair, wandsystemen en modulaire loungesystemen





**Melange Nap, Kvadrat
90 % Wolle, 10 % Nylon**

Breite ca. 140 cm, Längengewicht ca. 440 g/lf. M.
Scheuerfestigkeit über 60.000 Scheuertouren
nach Martindale
Brandverhalten getestet nach DIN EN 1021,
Teil 1 und 2
Schadstofffrei: Entspricht den Vorschriften
nach REACH

**Melange Nap, Kvadrat
90 % wool, 10 % nylon**

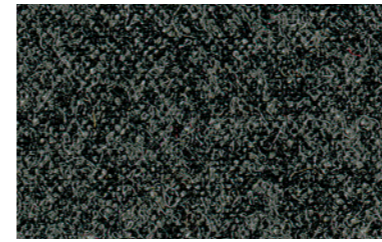
Approx. 140 cm wide, approx. weight 440 g/lm
Wear resistance tested to over 60.000 rub rub
cycles on the Martindale test
Flammability tested to DIN EN 1021,
parts 1 and 2
Free of harmful substances: complies with
REACH regulations

**Melange Nap, Kvadrat
90 % laine vierge, 10 % nylon**

Largeur : environ 140 cm, poids au mètre :
environ 440 g / ml
Résistance à l'usure : plus de 60.000 tours
Martindale
Comportement au feu testé selon la
norme DIN EN 1021, parties 1 et 2
Exempt de substances toxiques :
Satisfait aux prescriptions REACH

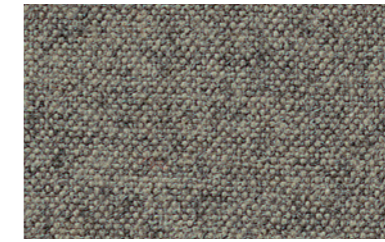
**Melange Nap, Kvadrat
90 % wol, 10 % nylon**

Breedte ca. 140 cm, gewicht per
streckende meter ca. 440 g
Slijtvastheid 60.000 toeren Martindale
Brandgedrag getest volgens DIN EN 1021,
deel 1 en 2
Vrij van schadelijke stoffen: Voldoet aan
de REACH-voorschriften



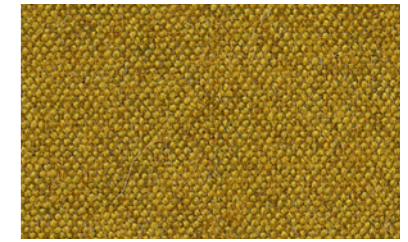
91

anthrazit / anthracite / anthracite /
antraciet



57

grau / grey / gris / grijs



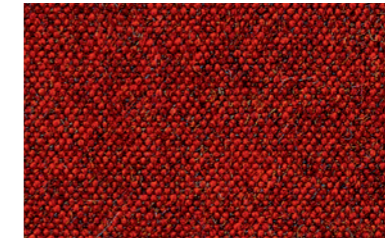
70

ocker / ochre / ocre / oker



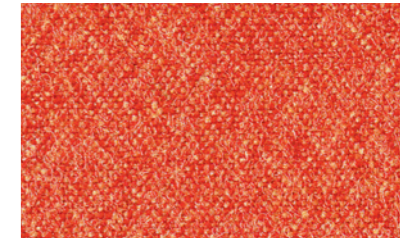
25

beige / beige / beige / beige



60

rot / red / rouge / rood



82

orange / orange / orange / oranje



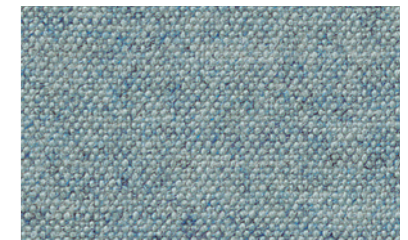
41

mittelblau / medium blue /
bleu moyen / middelblauw



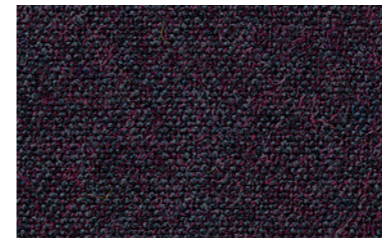
42

dunkelblau / dark blue /
bleu foncé / donkerblauw



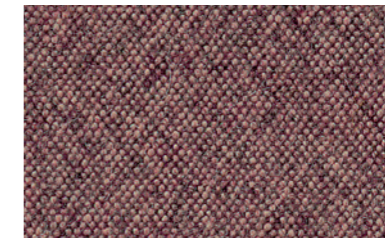
43

hellblau / light blue / bleu clair /
lichtblauw



68

pflaume / plum / prune / pruim



67

brombeer / blackberry / mûre /
bramen

