



ROHI

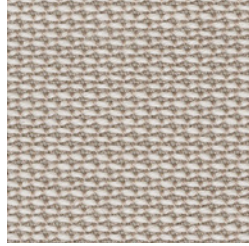
TOPIA

ROHI SPECIAL

TOPIA ROHI SPECIAL



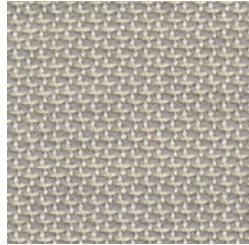
snow



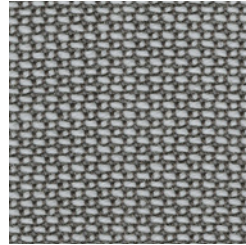
angora



moon



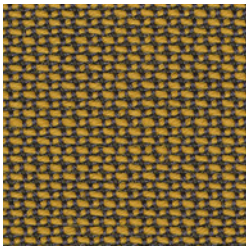
chrom



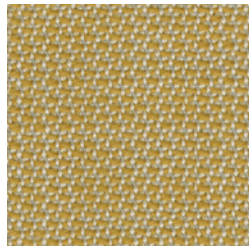
silver



platin



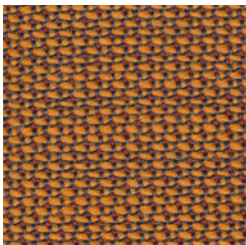
gold



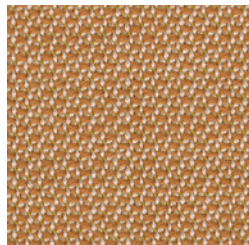
aureo



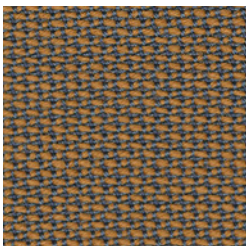
peat



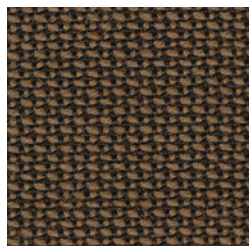
kupfer



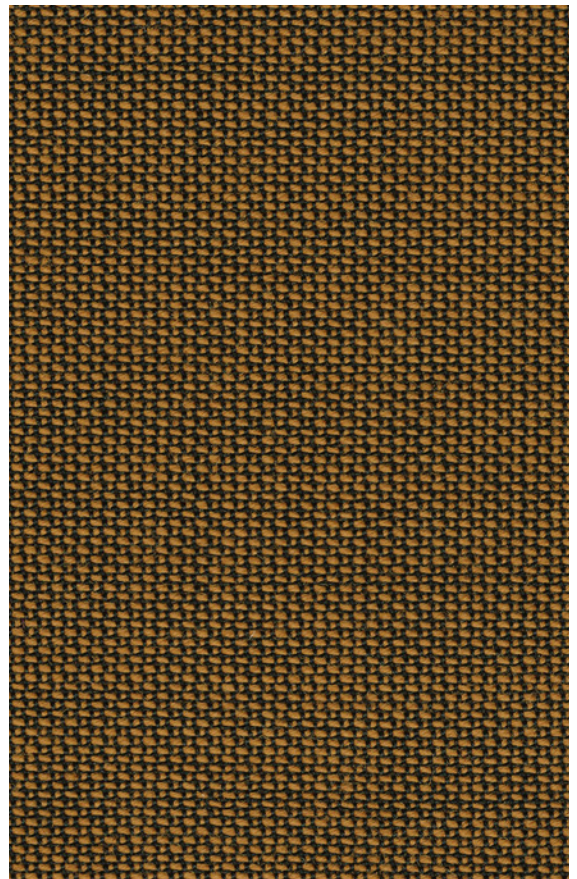
messing



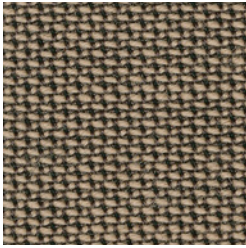
lord



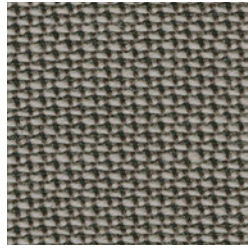
coffee



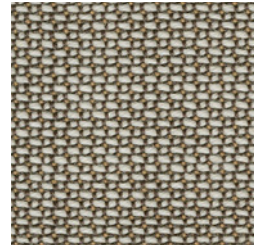
bronze



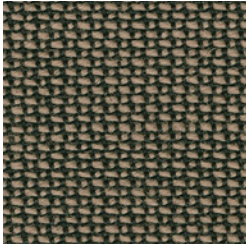
walnut



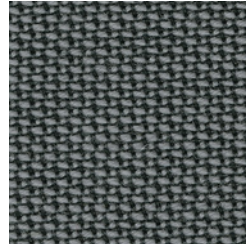
taupe



stone



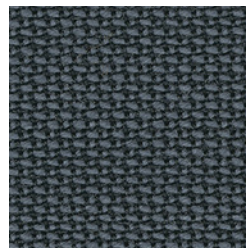
truffle



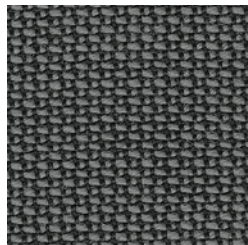
graphit



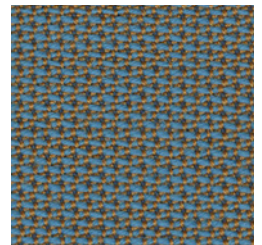
lanoso



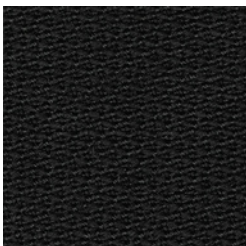
anthrazit



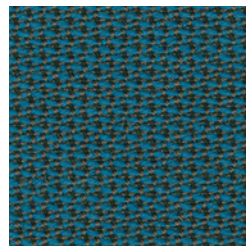
schiefer



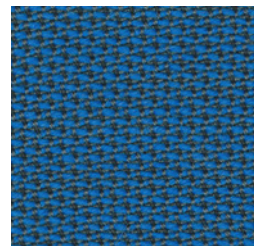
seashell



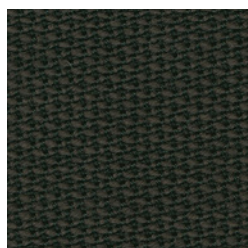
ebony



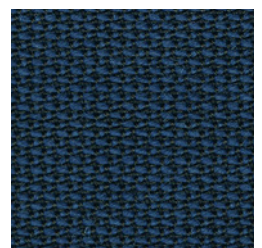
azur



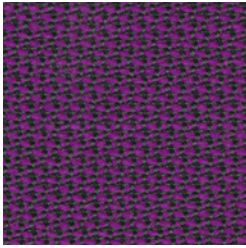
enzian



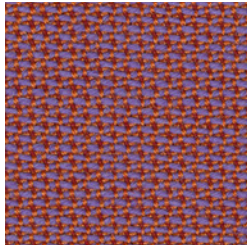
rosewood



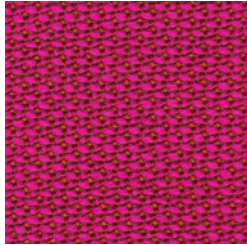
orion



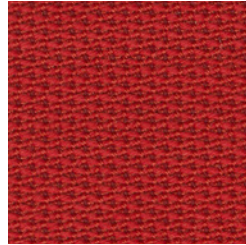
viola



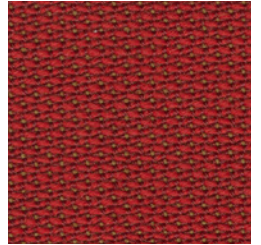
litchi



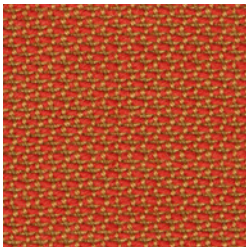
calluna



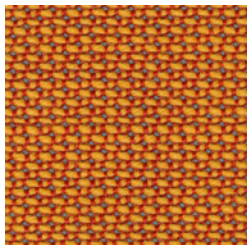
chilli



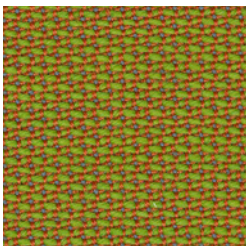
heart



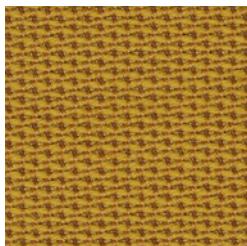
coral



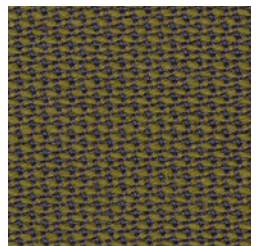
jelly



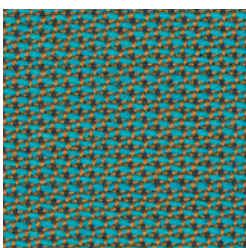
tivoli



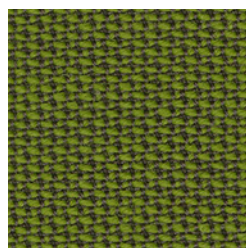
curry



pinie



tropic



palm

NATURAL MATERIAL
SOFT TOUCH
HIGH END QUALITY
YARN DYED
VIRGIN WOOL
DESIGN
MANUFACTURE
EASY CARE
LASTING VALUE

ROHI

GEWEBEBESCHREIBUNG

Dessin: TOPIA
Material: 95% Schurwolle 5% Polyamid
Gewicht ca.: 440 g/m² - 660 g/lfm
Breite ca.: 150 cm

QUALITÄTSBESCHREIBUNG

Scheuerfestigkeit: 50.000 Touren ISO 12947-2
Lichtdurchlässigkeit: DIN EN 410
Lichtechtheit: ≥ 5 ISO 105-B02 (Garnfärbung)
Pilling: ≥ 4-5 ISO 12945-2

reine Schurwolle – Kammgarnqualität
pflegeleicht, atmungsaktiv und schmutzabweisend
langlebig, hoch strapazierfähig
Garnfärbung für bestmögliche Farbbrillanz
und hohe Lichtechtheit
nicht direkter Sonneneinstrahlung aussetzen
Produktion und Design in Deutschland seit 1933

FLAMMSCHUTZ

Wolle ist von Natur aus schwer entflammbar
rohi Wollstoffe erfüllen folgende Normen
ohne zusätzliche Flammenschutzrüstung:
CAL TB 117 – 2013
EN 1021-1/ -2
BS 5852 Part 1: 1979
UNI 9175 1IM
ÖNORM B1/Q1
IMO 2014/90/EU Schiffsausrüstungsrichtlinie
mit optionaler Flammenschutzrüstung:
BS 5852: 2006 Crib5
DIN 4102-1 B2
EN 13501-1 E
FAR 25.853 12 Sek. vertikal
BKZ 5.3 SN 198898
NF P92-507 M2
Bahn EN 45545-2, R21, ISO 5660-1 HL3

AKUSTIK

Strömungswiderstand: $R_s = 881$ Pa s/m DIN EN 29053
Schallabsorption gerafft: $\alpha_w = 0,80/ B$ ISO 11654

ÖKOLOGIE

natürlich nachwachsender Rohstoff
IWTO Guidelines for Wool Sheep Welfare
RAL DE-UZ 117 Anl. 3b für „Blauer Engel“
ohne Flammenschutz
AB 2998 (US Export Norm)
REACH (EU Export Norm)

WEITERE MERKMALE

Spezialausrüstung gegen Schrumpfung und Pillingneigung
Dimout Option auf Anfrage
Mindestbestellmenge ab 25 lfm
Restmengen auf Anfrage
individuelle Stoffentwicklung
für Architektur- und Designkonzepte
Sonderfarben ab 25 lfm

DESCRIPTION OF FABRICS

Design: TOPIA
Content: 95% virgin wool 5% polyamide
Weight approx.: 440 g/m² - 660 g/lm
Width approx.: 150 cm

QUALITY DETAILS

Abrasion: 50.000 rubs ISO 12947-2
Light transmission: DIN EN 410
Lightfastness: ≥ 5 ISO 105-B02 (yarn dyed)
Pilling: ≥ 4-5 ISO 12945-2

virgin wool – worsted yarn quality
easy care, breathable and stain-resistant
durable, hard-wearing
yarn dyed for brilliant colours and
good lightfastness
don't expose to direct sunlight
production and design 'Made in Germany' since 1933

FLAME RESISTANCE

wool is naturally flame retardant
rohi wool fabrics satisfy the following fire norms
with no additional flame retardant treatment:
CAL TB 117 – 2013
EN 1021-1/ -2
BS 5852 part 1: 1979
UNI 9175 1IM
ÖNORM B1/Q1
IMO 2014/90/EU Marine Equipment Directive (MED)
with additional flame retardant treatment:
BS 5852: 2006 Crib5
DIN 4102-1 B2
EN 13501-1 E
FAR 25.853 12 sec. vertical
BKZ 5.3 SN 198898
NF P92-507 M2
Train EN 45545-2, R21, ISO 5660-1 HL3

ACOUSTIC

Flow resistivity: $R_s = 881$ Pa s/m DIN EN 29053
Sound absorption folded: $\alpha_w = 0.80/ B$ ISO 11654

ECOLOGY

natural, renewable raw material
IWTO Guidelines for Wool Sheep Welfare
RAL DE-UZ 117 Att. 3b for "Blue Angel"
without flame retardant
AB 2998 (US export standard)
REACH (EU export standard)

MORE FEATURES

special finish: anti-shrink, anti-pilling
dimout option on request
minimum order quantity from 25 lm
remaining quantities on request
development of individual fabrics for
architects' and designers' concepts
special colours from 25 lm



flame retardant



aktuellste Spezifikationen /
latest specifications:
rohi.com/topia